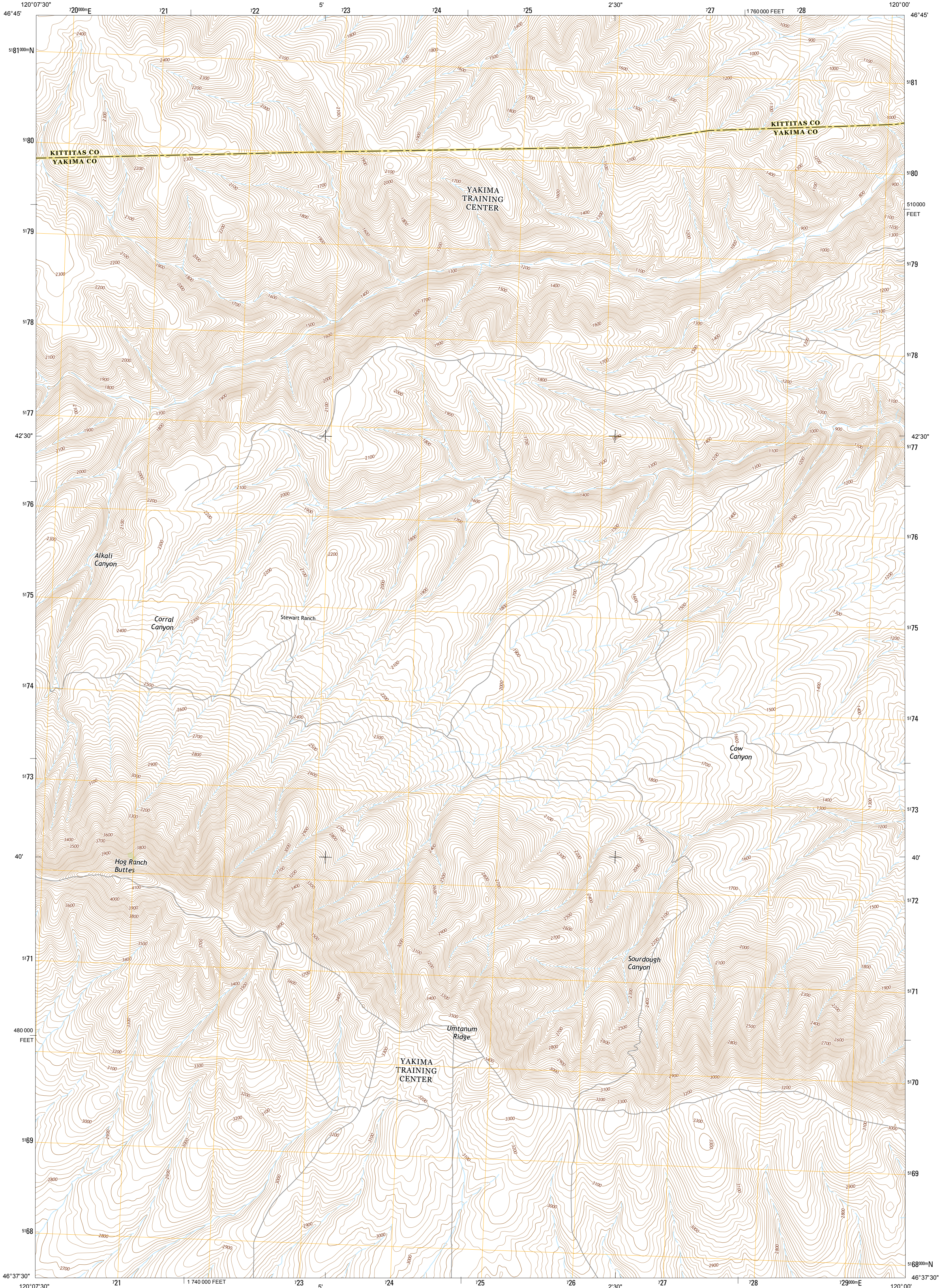




U.S. DEPARTMENT OF THE INTERIOR
U. S. GEOLOGICAL SURVEY



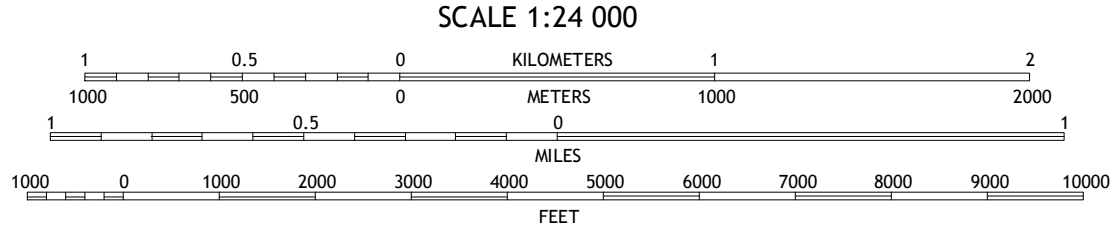
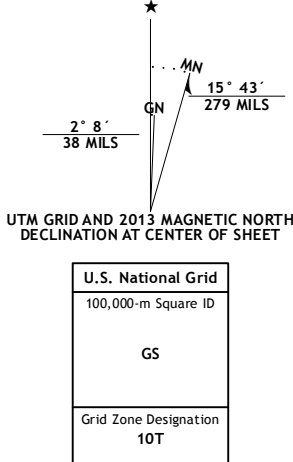
BLACK ROCK SPRING NE QUADRANGLE
WASHINGTON
7.5-MINUTE SERIES



Produced by the United States Geological Survey
North American Datum of 1983 (NAD83)
World Geodetic System of 1984 (WGS84). Projection and
1 000-meter grid: Universal Transverse Mercator, Zone 10T
10 000-foot ticks: Washington Coordinate System of 1983 (south zone)

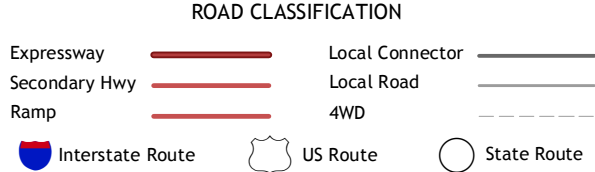
This map is not a legal document. Boundaries may be
generalized for this map scale. Private lands within government
reservations may not be shown. Obtain permission before
entering private lands.

Imagery.....NAP, July 2011
Roads.....2006-2013 TomTom
Names.....GNIS, 2013
Hydrography.....National Hydrography Dataset, 2011
Contours.....National Elevation Dataset, 1999
Boundaries.....Census, IBWC, IBC, USGS, 1972- 2012
Public Land Survey System.....BLM, 2011



QUADRANGLE LOCATION

McDonald Spring	Doris	Beverly
Black Rock Spring NW	Black Rock Spring NE	Priest Rapids
Black Rock Spring SW	Black Rock Spring	Cairn Hope Peak



BLACK ROCK SPRING NE, WA
2013

