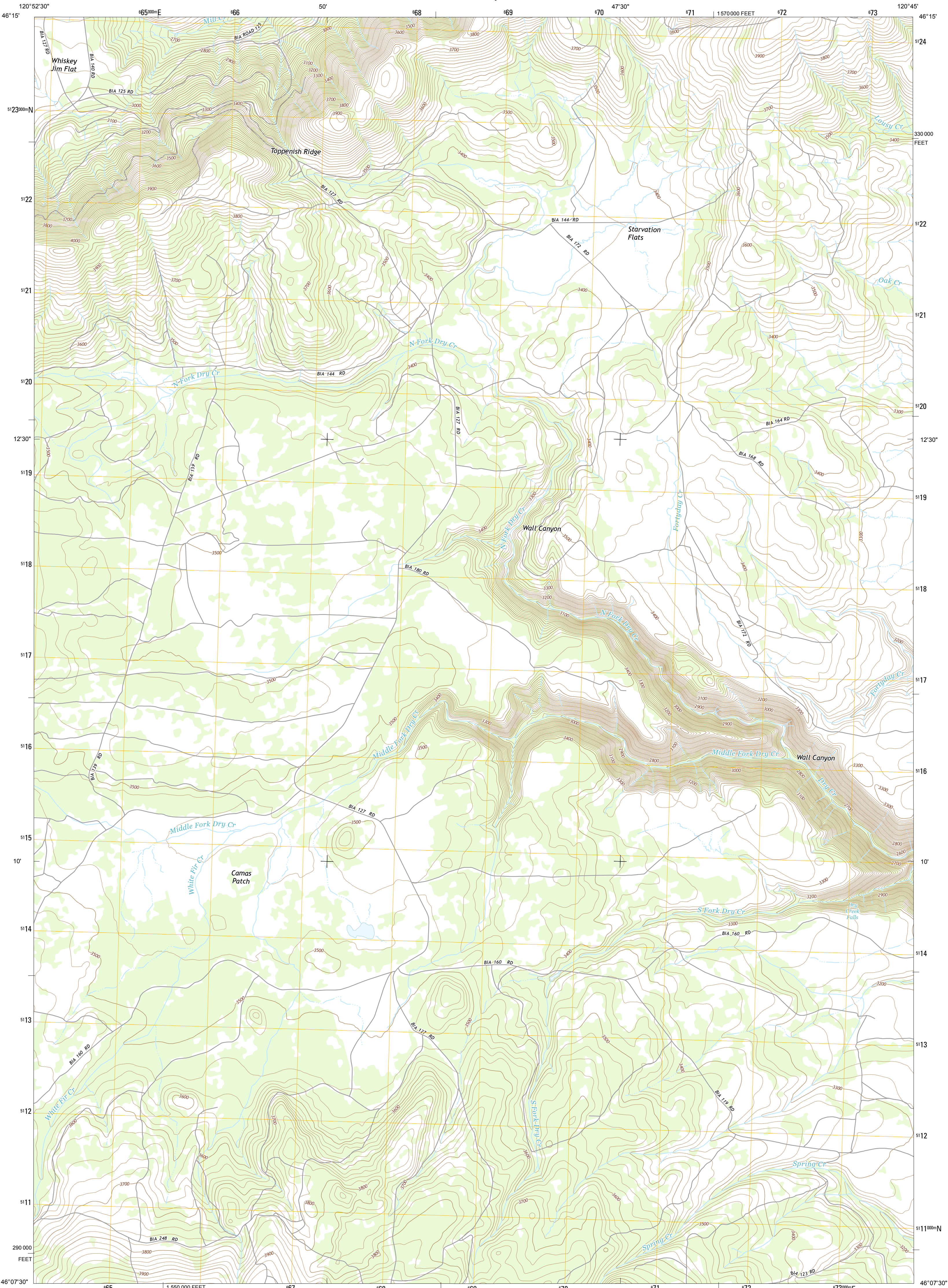




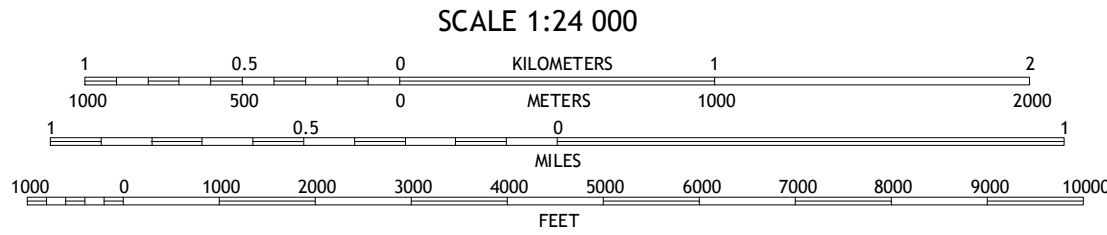
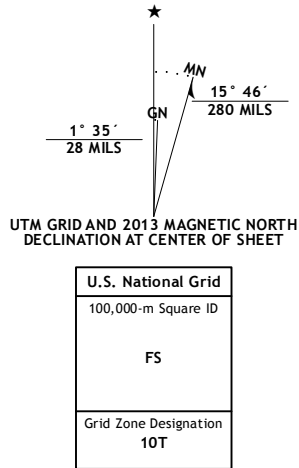
U.S. DEPARTMENT OF THE INTERIOR  
U. S. GEOLOGICAL SURVEY



CAMAS PATCH QUADRANGLE  
WASHINGTON-YAKIMA CO.  
7.5-MINUTE SERIES



**Produced by the United States Geological Survey**  
North American Datum of 1983 (NAD83)  
World Geodetic System of 1984 (WGS84). Projection and  
1 000-meter grid: Universal Transverse Mercator, Zone 10T  
10 000-foot ticks: Washington Coordinate System of 1983 (south  
zone)  
This map is not a legal document. Boundaries may be  
generalized for this map scale. Private lands within government  
reservations may not be shown. Obtain permission before  
entering private lands.  
Imagery.....NAIP, August 2011  
Roads.....©2006-2013, TomTom  
Names.....GNIS, 2013  
Hydrography.....National Hydrography Dataset, 2011  
Contours.....National Elevation Dataset, 2001  
Boundaries.....Census, IBWC, IBC, USGS, 1972 - 2012  
Public Land Survey System.....BLM, 2011



CONTOUR INTERVAL 20 FEET  
NORTH AMERICAN VERTICAL DATUM OF 1988  
This map was produced to conform with the  
National Geospatial Program US Topo Product Standard, 2011.  
A metadata file associated with this product is draft version 0.6.15



|                         |                  |                        |
|-------------------------|------------------|------------------------|
| Willy<br>Dick<br>Canyon | Fort<br>Simcoe   | Toppenish<br>Mountain  |
| McKays<br>Butte         | Camas<br>Patch   | Logy<br>Creek<br>Falls |
| Hagerty<br>Butte        | Stagman<br>Butte | Logy<br>Creek SW       |

| ROAD CLASSIFICATION |                 |             |
|---------------------|-----------------|-------------|
| Expressway          | Local Connector |             |
| Secondary Hwy       | Local Road      |             |
| Ramp                | 4WD             |             |
| Interstate Route    | US Route        | State Route |

CAMAS PATCH, WA  
2013

