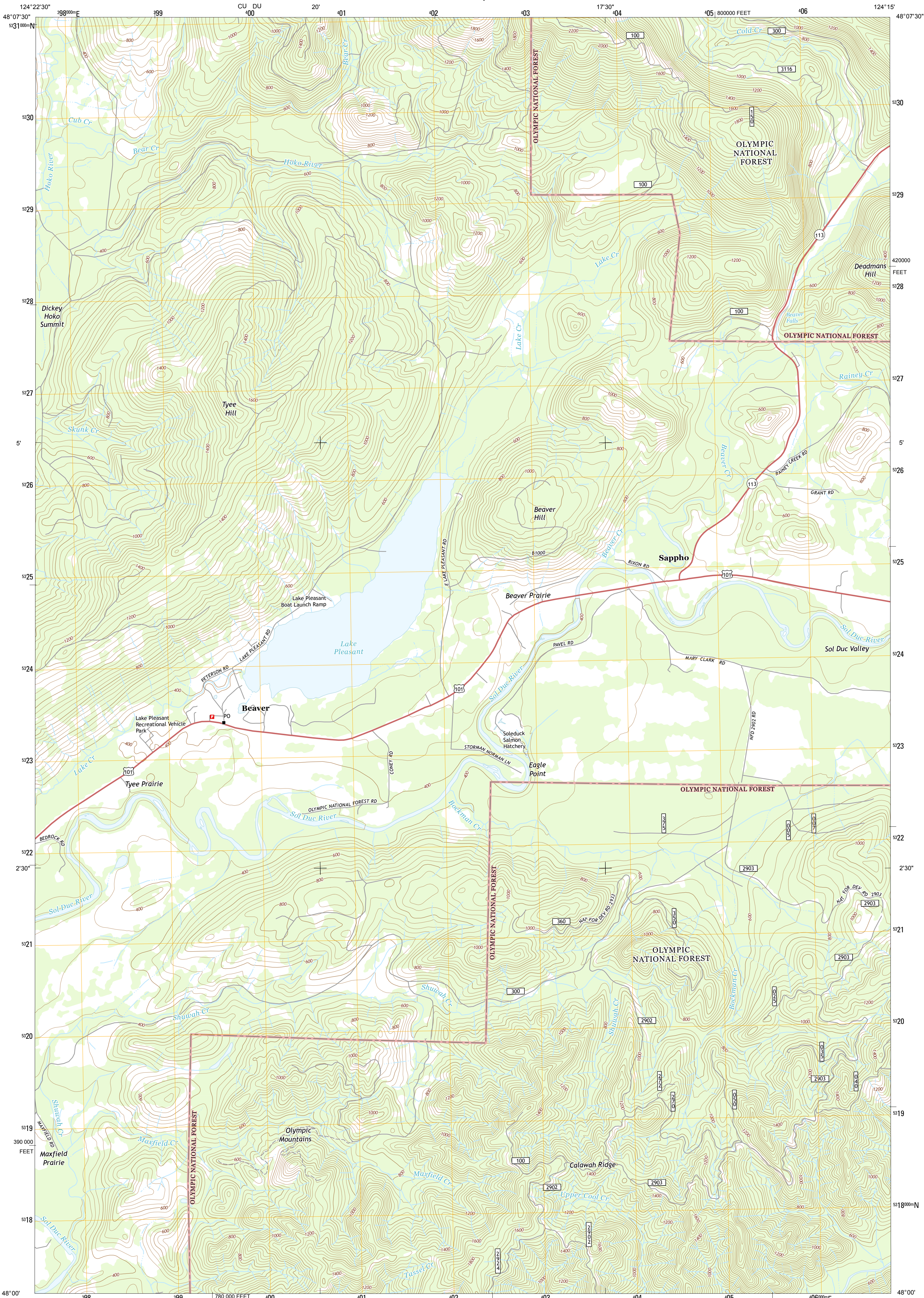




U.S. DEPARTMENT OF THE INTERIOR
U. S. GEOLOGICAL SURVEY



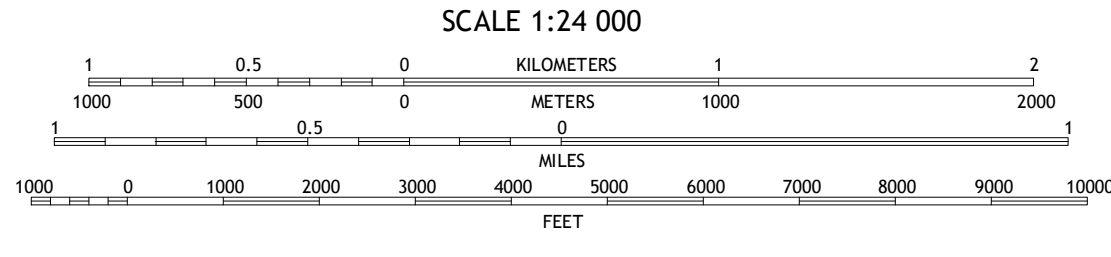
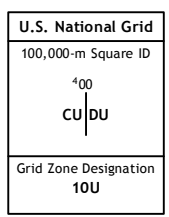
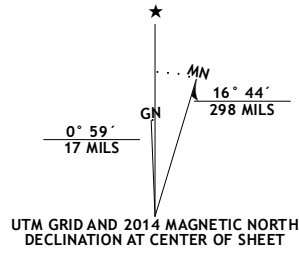
LAKE PLEASANT QUADRANGLE
WASHINGTON-CLALLAM CO.
7.5-MINUTE SERIES



Produced by the United States Geological Survey
North American Datum of 1983 (NAD83)
World Geodetic System of 1984 (WGS84). Projection and
1 000-meter grid: Universal Transverse Mercator, Zone 10U
10 000-foot ticks: Washington Coordinate System of 1983 (north
zone)

This map is not a legal document. Boundaries may be
generalized for this map scale. Private lands within government
reservations may not be shown. Obtain permission before
entering private lands.

Imagery.....NAIP, August 2011
Roads.....©2006-2013 TomTom
Roads within US Forest Service Lands.....FSTopo Data
with limited Forest Service updates, 2013
Names.....GNIS, 2013
Hydrography.....National Hydrography Dataset, 2011
Contours.....National Elevation Dataset, 1999
Boundaries.....IBIC, USGS, 1972-2012
Public Land Survey System.....BLM, 2011



CONTOUR INTERVAL 40 FEET
NORTH AMERICAN VERTICAL DATUM OF 1988
This map was produced to conform with the
National Geospatial Program US Topo Product Standard, 2011.
A metadata file associated with this product is draft version 0.6.15



| | | |
|--------------------|----------------|---------------|
| Hoko Falls | Ellis Mountain | West of Pysht |
| Gunderson Mountain | Lake Pleasant | Deadmans Hill |
| Forks | Reade Hill | Indian Pass |

ADJOINING 7.5' QUADRANGLES

| ROAD CLASSIFICATION | | | |
|---------------------|-----------------|--------------------|--------------------|
| Expressway | Local Connector | US Route | State Route |
| Secondary Hwy | Local Road | FS Route | FS High |
| Ramp | 4WD | FS Passenger Route | FS Clearance Route |
| Interstate Route | | | |
| FS Primary Route | | | |

Check with local Forest Service unit
for current travel conditions and restrictions.

LAKE PLEASANT, WA
2014

