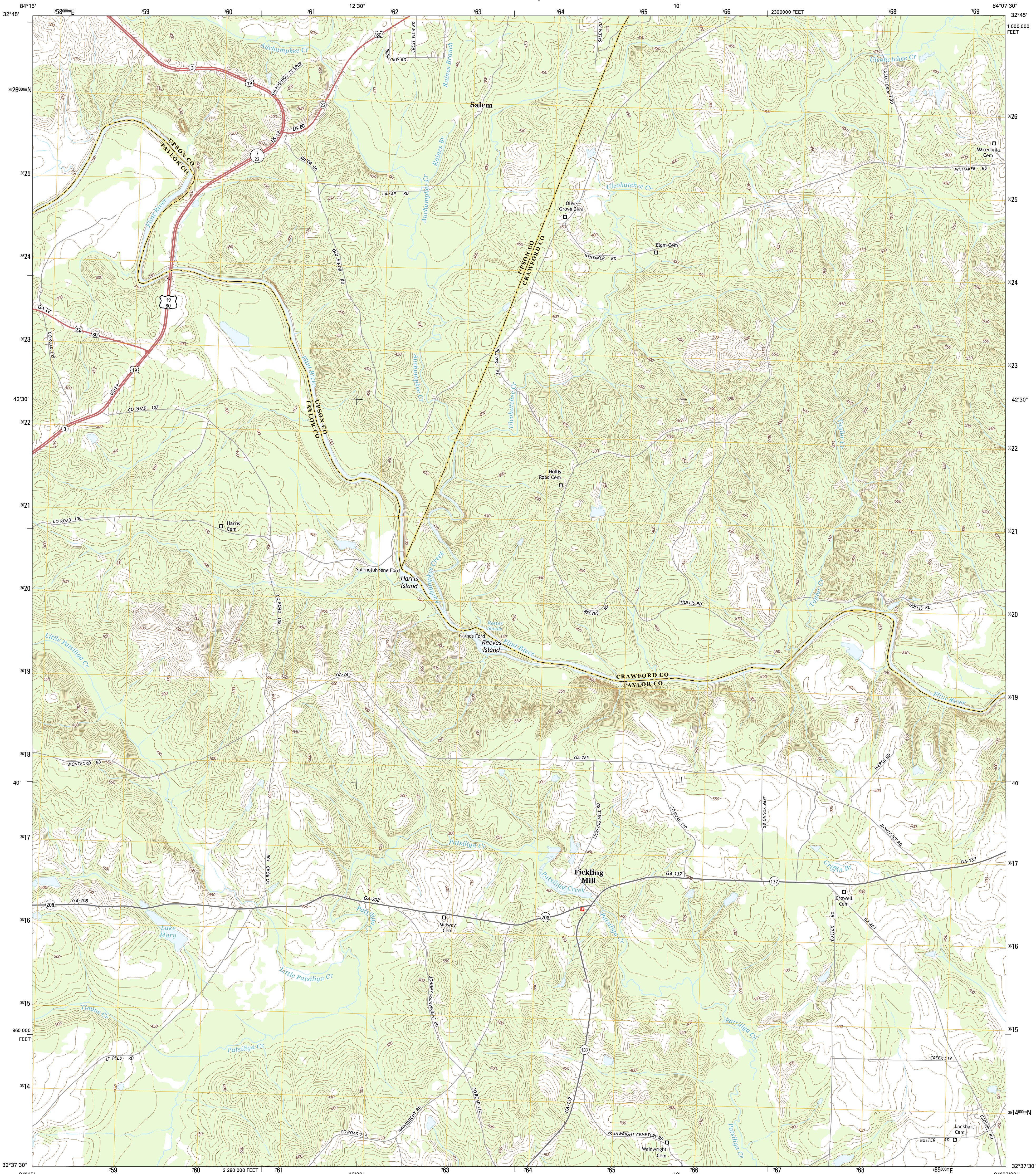




U.S. DEPARTMENT OF THE INTERIOR
U.S. GEOLOGICAL SURVEY



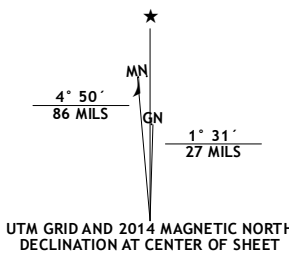
FICKLING MILL QUADRANGLE
GEORGIA
7.5-MINUTE SERIES



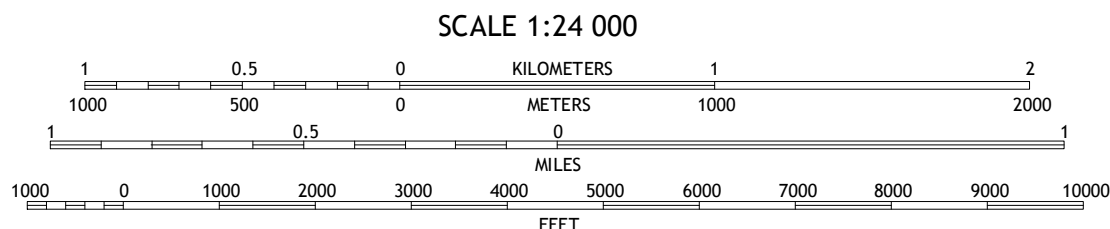
Produced by the United States Geological Survey
North American Datum of 1983 (NAD83)
World Geodetic System of 1984 (WGS84). Projection and
1 000-meter grid: Universal Transverse Mercator, Zone 16S
10 000-foot ticks: Georgia Coordinate System of 1983 (west
zone)

This map is not a legal document. Boundaries may be
generalized for this map scale. Private lands within government
reservations may not be shown. Obtain permission before
entering private lands.

Imagery.....NAIP, September 2010
Roads.....HERE, ©2013
Names.....GNIS, ©2013
Hydrography.....National Hydrography Dataset, 2010
Contours.....National Elevation Dataset, 2008
Boundaries.....Multiple sources; see metadata file 1972 - 2013



U.S. National Grid
100,000-m Square ID
GB
Grid Zone Designation
16S



CONTOUR INTERVAL 10 FEET
NORTH AMERICAN VERTICAL DATUM OF 1988
This map was produced to conform with the
National Geospatial Program US Topo Product Standard, 2011.
A metadata file associated with this product is draft version 0.6.16



ROAD CLASSIFICATION	
Expressway	Local Connector
Secondary Hwy	Local Road
Ramp	4WD
Interstate Route	US Route
	State Route

1	2	3
4	5	
6	7	8

ADJOINING QUADRANGLES

1 Lincoln Park
2 Logtown
3 Culloden
4 Prattsburg
5 Roberta
6 Butler West
7 Butler East
8 Reynolds

FICKLING MILL, GA
2014

