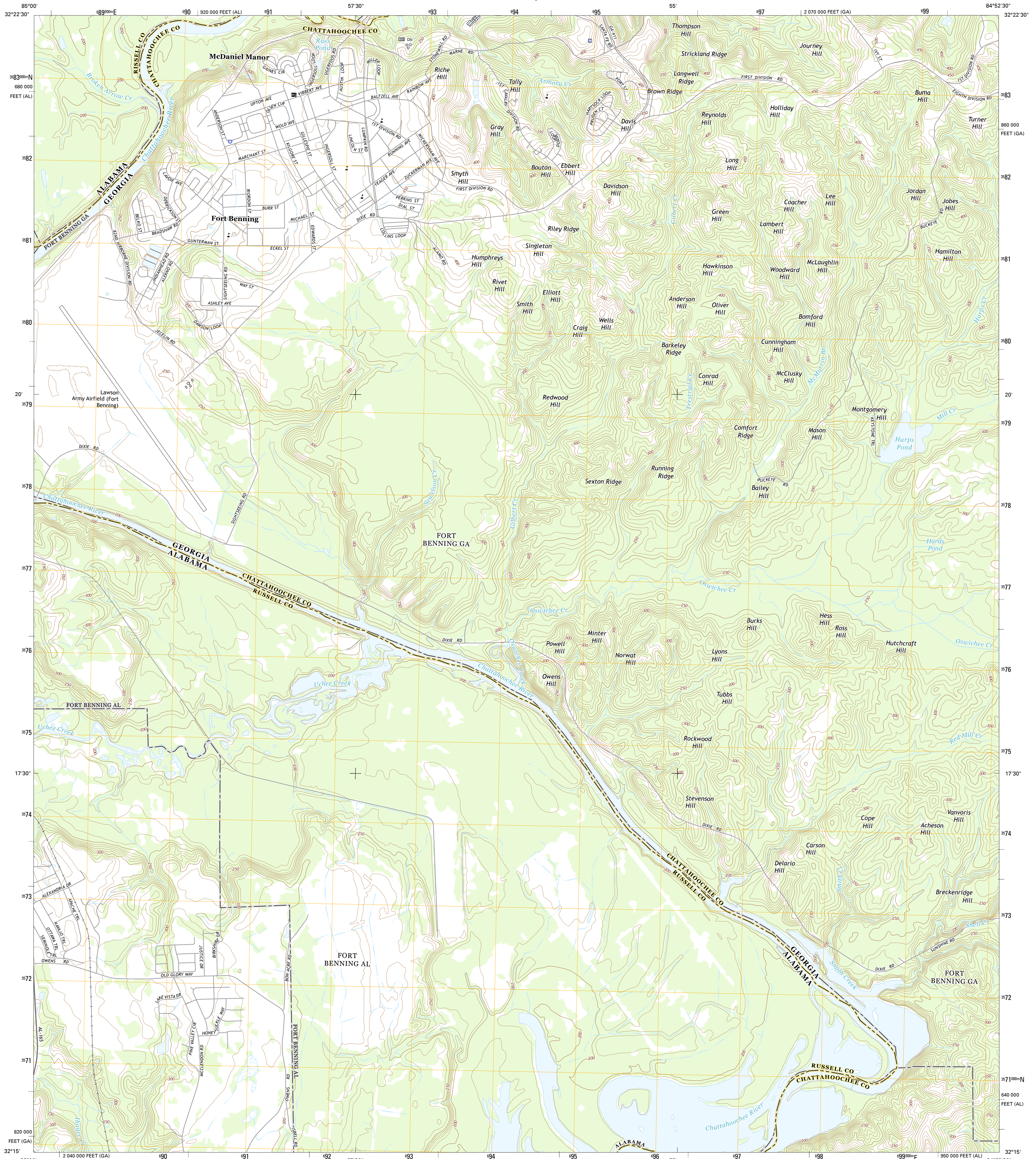




U.S. DEPARTMENT OF THE INTERIOR
U.S. GEOLOGICAL SURVEY



FORT BENNING QUADRANGLE
GEORGIA-ALABAMA
7.5-MINUTE SERIES



Produced by the United States Geological Survey
North American Datum of 1983 (NAD83)
World Geodetic System of 1984 (WGS84). Projection and
1 000-meter grid: Universal Transverse Mercator, Zone 16S
10 000-foot ticks: Georgia Coordinate System of 1983 (west
zone), Alabama Coordinate System of 1983 (east zone)

This map is not a legal document. Boundaries may be
generalized for this map scale. Private lands within government
reservations may not be shown. Obtain permission before
entering private lands.

Imagery.....NAIP, September 2010
Roads.....HERE, ©2013
Names.....GNIS, 2013
Hydrography.....National Hydrography Dataset, 2010
Contours.....National Elevation Dataset, 2008
Boundaries.....Multiple sources; see metadata file 1972 - 2013

UTM GRID AND 2014 MAGNETIC NORTH
DECLINATION AT CENTER OF SHEET

U.S. National Grid
100,000-m Square ID
700
FA GA
Grid Zone Designation
16S

SCALE 1:24 000
1 000 0 500 0 500 1000 2000
1 000 0 1000 2000 3000 4000 5000 6000 7000 8000 9000 10000
KILOMETERS
METERS
MILES
FEET

CONTOUR INTERVAL 10 FEET
NORTH AMERICAN VERTICAL DATUM OF 1988

This map was produced to conform with the
National Geospatial Program US Topo Product Standard, 2011.
A metadata file associated with this product is draft version 0.6.16



QUADRANGLE LOCATION

ROAD CLASSIFICATION
Expressway Local Connector
Secondary Hwy Local Road
Ramp 4WD
Interstate Route US Route State Route

ADJOINING QUADRANGLES
1 Phenix City
2 Columbus
3 Ochilree
4 Fort Mitchell
5 Cusseta
6 Omaha
7 Union
8 Louvale

FORT BENNING, GA-AL
2014

