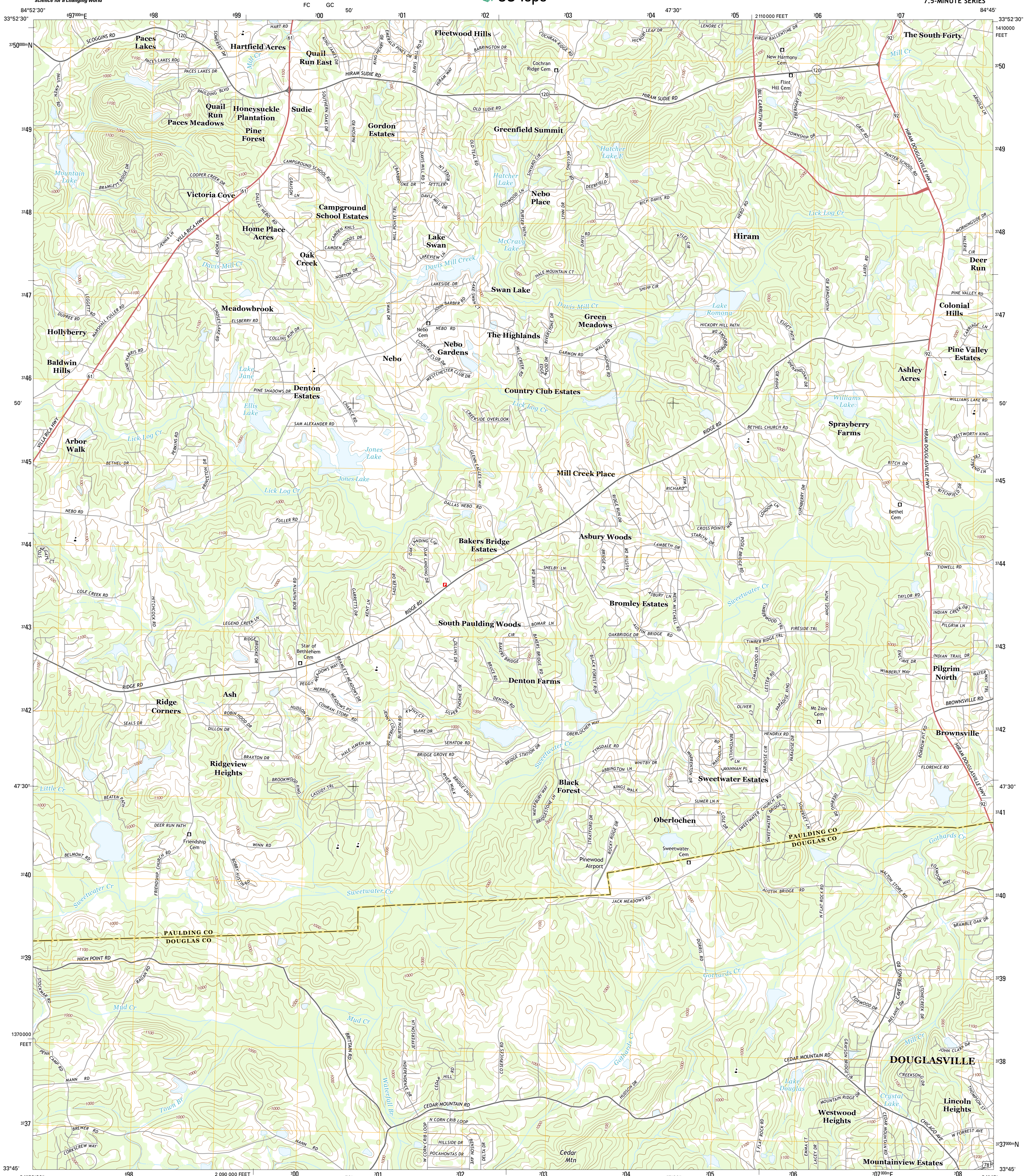




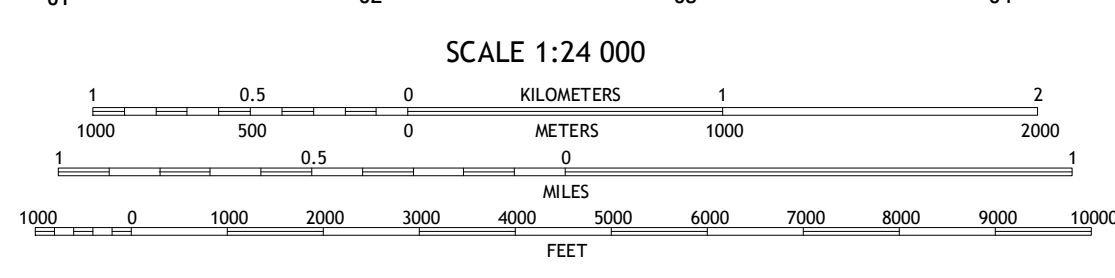
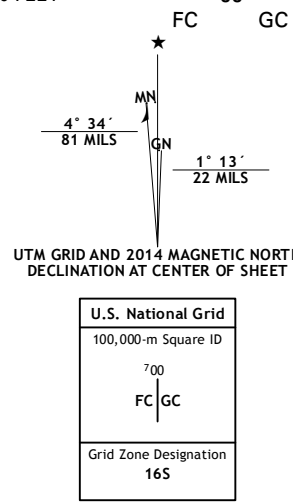
U.S. DEPARTMENT OF THE INTERIOR  
U.S. GEOLOGICAL SURVEY



NEBO QUADRANGLE  
GEORGIA  
7.5-MINUTE SERIES



Produced by the United States Geological Survey  
North American Datum of 1983 (NAD83)  
World Geodetic System of 1984 (WGS84) - Projection and  
1 000-meter grid: Universal Transverse Mercator, Zone 16S  
10 000-foot ticks: Georgia Coordinate System of 1983 (west  
zone)  
This map is not a legal document. Boundaries may be  
generalized for this map scale. Private lands within government  
reservations may not be shown. Obtain permission before  
entering private lands.  
Imagery:.....NAIP, July 2010 - September 2010  
Roads:.....HERE, ©2013  
Names:.....GNIS, 2013  
Hydrography:.....National Hydrography Dataset, 2010  
Contours:.....National Elevation Dataset, 2009  
Boundaries:.....Multiple sources; see metadata file 1972 - 2013



CONTOUR INTERVAL 20 FEET  
NORTH AMERICAN VERTICAL DATUM OF 1988  
This map was produced to conform with the  
National Geospatial Program US Topo Product Standard, 2011.  
A metadata file associated with this product is draft version 0.6.16



ROAD CLASSIFICATION			
Expressway	Local Connector	US Route	State Route
Secondary Hwy	Local Road		
Ramp	4WD		
Interstate Route			

1	2	3
4	5	6
7	8	9

1 Yorkville  
2 Dallas  
3 Lost Mountain  
4 New Georgia  
5 Austell  
6 Villa Rica  
7 Winston  
8 Campbellton

NEBO, GA  
2014

