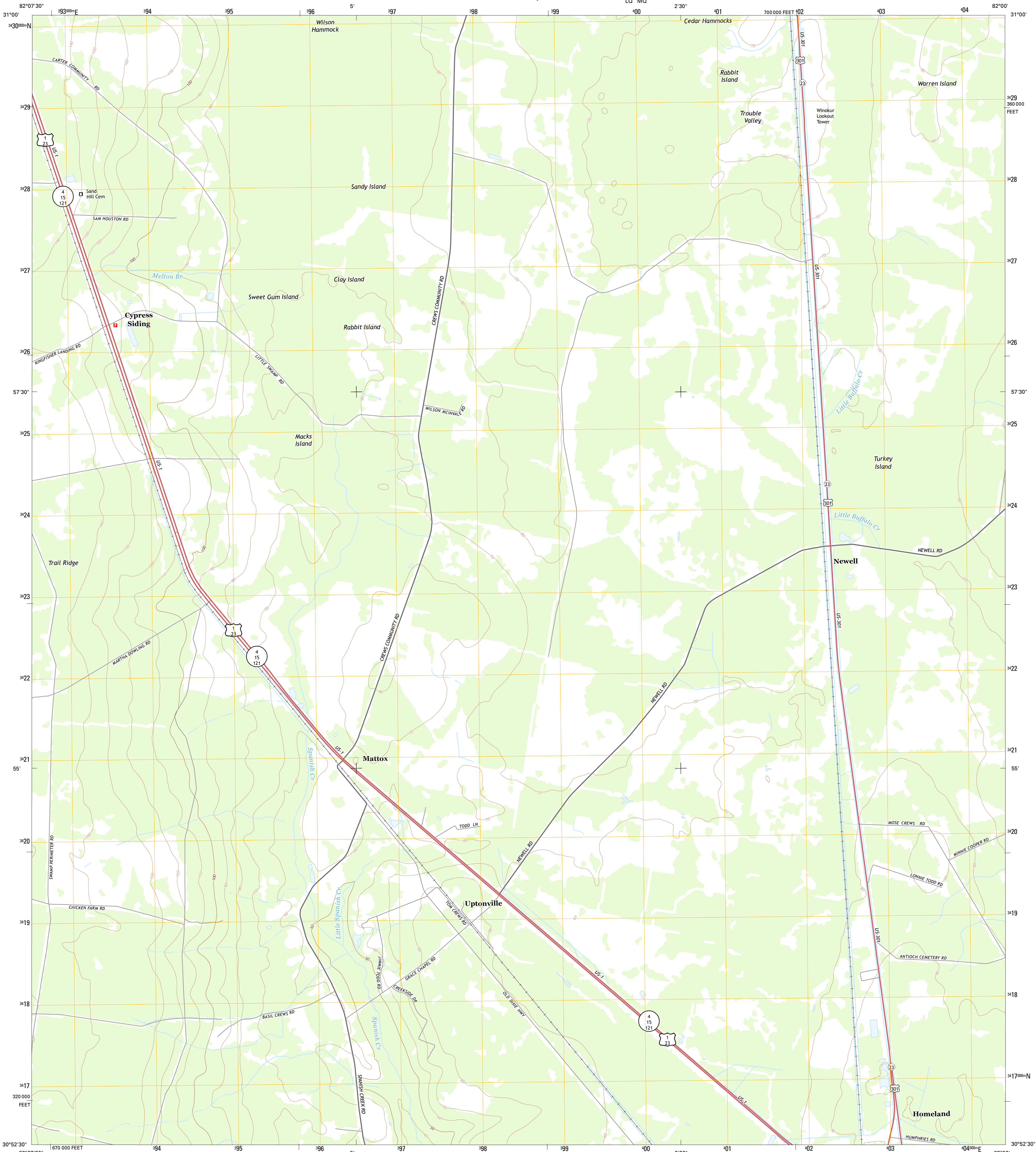




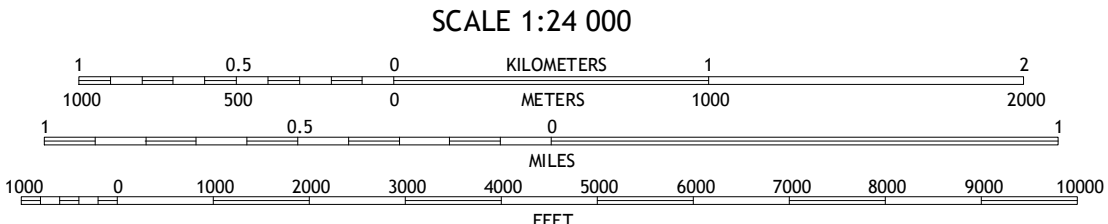
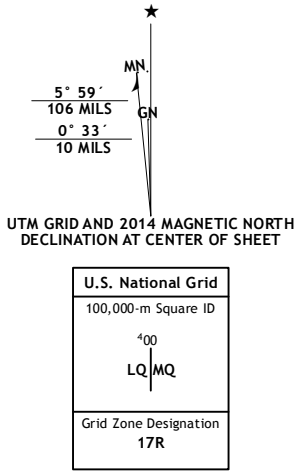
U.S. DEPARTMENT OF THE INTERIOR
U.S. GEOLOGICAL SURVEY



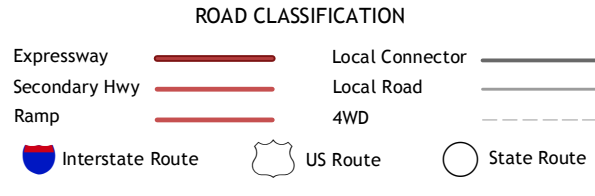
NEWELL QUADRANGLE
GEORGIA-CHARLTON CO.
7.5-MINUTE SERIES



Produced by the United States Geological Survey
North American Datum of 1983 (NAD83). Projection and
World Geodetic System of 1984 (WGS84). 1000-meter grid; Universal Transverse Mercator, Zone 17R
10 000-foot ticks: Georgia Coordinate System of 1983 (east zone)
This map is not a legal document. Boundaries may be
generalized for this map scale. Private lands within government
reservations may not be shown. Obtain permission before
entering private lands.
Imagery.....NAIP, September 2010
Roads.....HERE, ©2013
Names.....GNIS, 2013
Hydrography.....National Hydrography Dataset, 2010
Contours.....National Elevation Dataset, 2012
Boundaries.....Multiple sources; see metadata file 1972 - 2013



CONTOUR INTERVAL 10 FEET
NORTH AMERICAN VERTICAL DATUM OF 1988
This map was produced to conform with the
National Geospatial Program US Topo Product Standard, 2011.
A metadata file associated with this product is draft version 0.6.16



1	2	3
4	5	6
7	8	9

1 Fort Mudge
2 Winkur
3 Boons Lake
4 Double Lakes
5 Burnt Fort
6 Chase Prairie
7 Folkston
8 Bouloune

NEWELL, GA
2014

