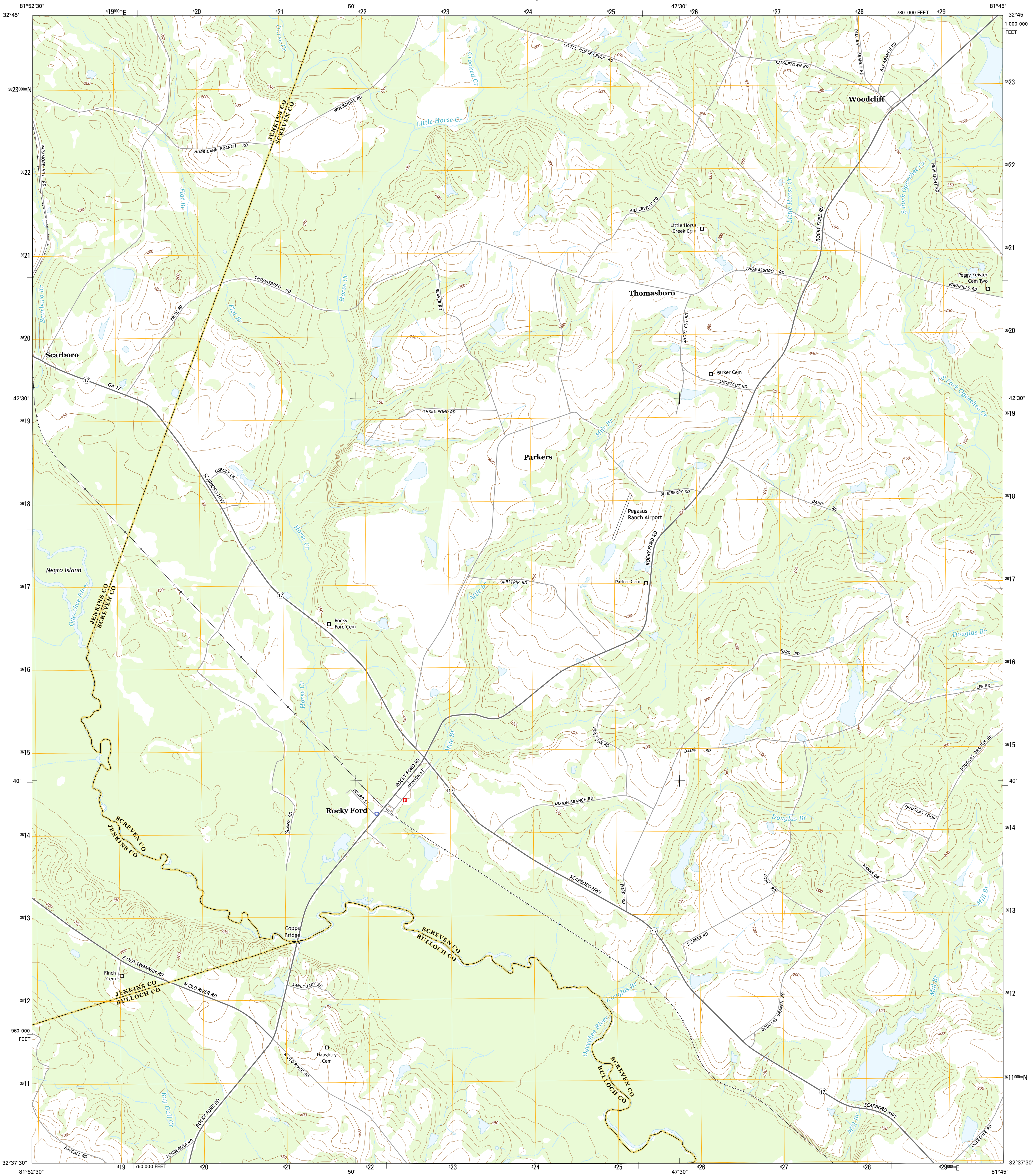




U.S. DEPARTMENT OF THE INTERIOR  
U.S. GEOLOGICAL SURVEY



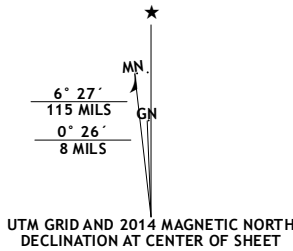
ROCKY FORD QUADRANGLE  
GEORGIA  
7.5-MINUTE SERIES



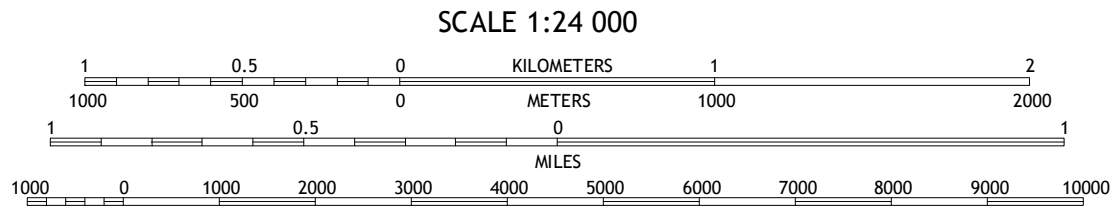
Produced by the United States Geological Survey  
North American Datum of 1983 (NAD83)  
World Geodetic System of 1984 (WGS84). Projection and  
1000-meter grid: Universal Transverse Mercator, Zone 17S  
10 000-foot ticks: Georgia Coordinate System of 1983 (east  
zone)

This map is not a legal document. Boundaries may be  
generalized for this map scale. Private lands within government  
reservations may not be shown. Obtain permission before  
entering private lands.

Imagery.....NAIP, September 2010 - October 2010  
Roads.....HERE, ©2013  
Names.....GNIS, ©2013  
Hydrography.....National Hydrography Dataset, 2010  
Contours.....National Elevation Dataset, 2012  
Boundaries.....Multiple sources; see metadata file 1972 - 2013



U.S. National Grid 100,000+ Square ID
MS
Grid Zone Designation 17S



CONTOUR INTERVAL 10 FEET  
NORTH AMERICAN VERTICAL DATUM OF 1988  
This map was produced to conform with the  
National Geospatial Program US Topo Product Standard, 2011.  
A metadata file associated with this product is draft version 0.6.16



1	2	3
4	5	6
7	8	9

1 Millen  
2 Bay Branch  
3 Sylvania North  
4 Four Points  
5 Sylvania South  
6 Portal  
7 Hopeulikit  
8 Dover

ROAD CLASSIFICATION	
Expressway	Local Connector
Secondary Hwy	Local Road
Ramp	4WD
Interstate Route	US Route
	State Route

ROCKY FORD, GA  
2014

