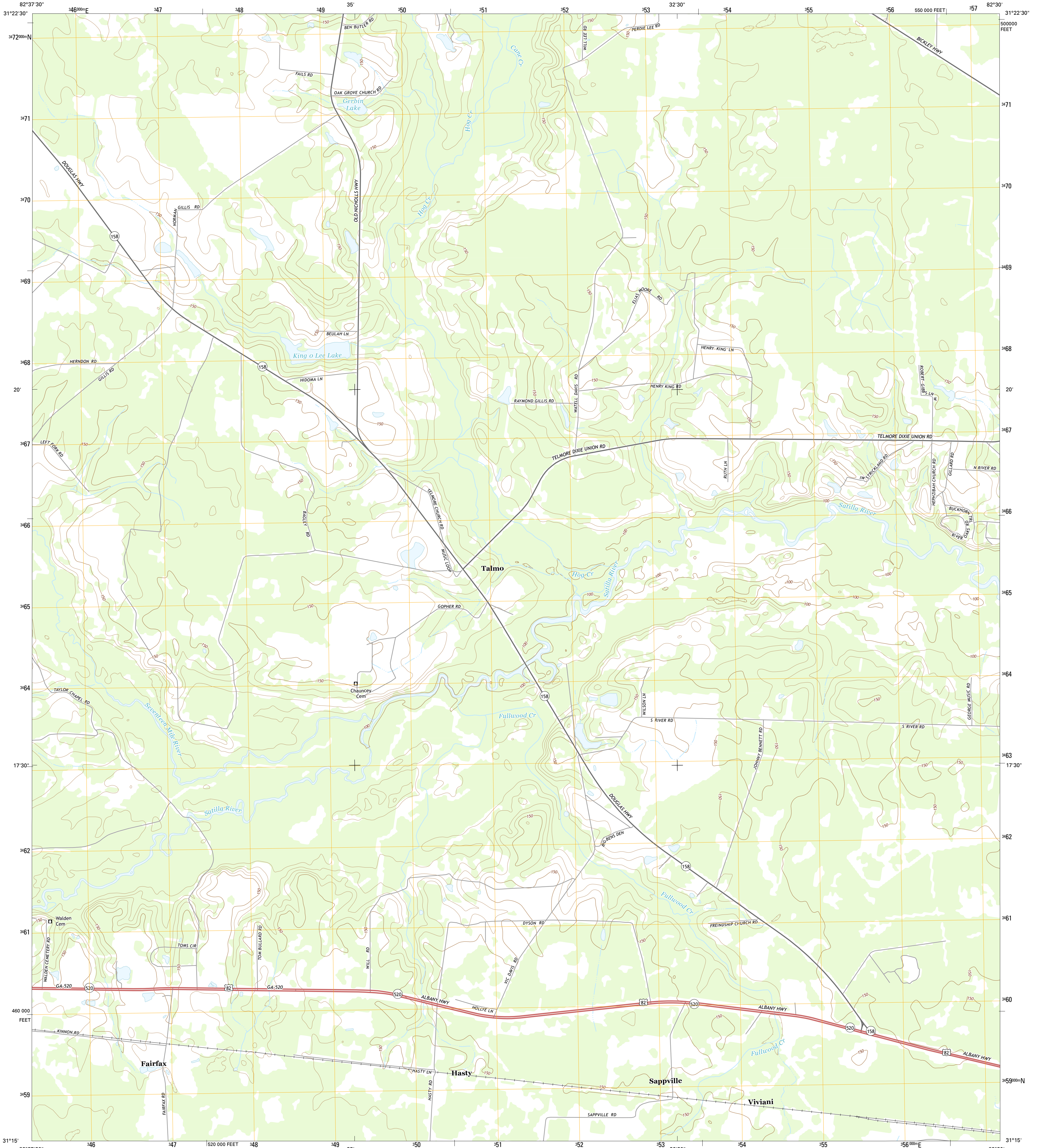




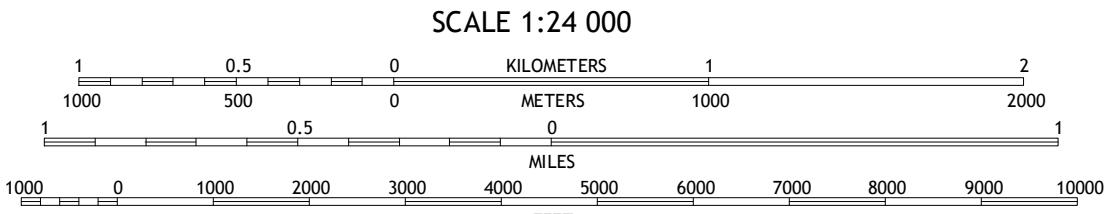
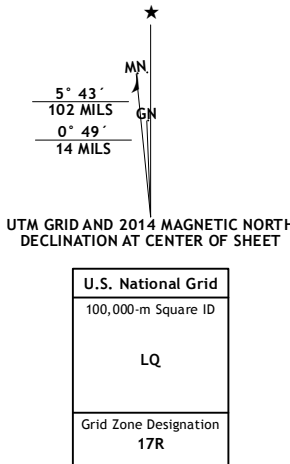
U.S. DEPARTMENT OF THE INTERIOR
U.S. GEOLOGICAL SURVEY



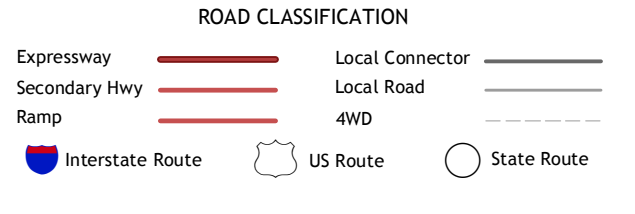
TALMO QUADRANGLE
GEORGIA-WARE CO.
7.5-MINUTE SERIES



Produced by the United States Geological Survey
North American Datum of 1983 (NAD83)
World Geodetic System of 1984 (WGS84), Projection and
1,000-meter grid: Universal Transverse Mercator, Zone 17R
10 000-foot ticks: Georgia Coordinate System of 1983 (east
zone)
This map is not a legal document. Boundaries may be
generalized for this map scale. Private lands within government
reservations may not be shown. Obtain permission before
entering private lands.
Imagery.....NAIP, July 2010 - September 2010
Roads.....HERE, ©2013
Names.....GNIS, 2013
Hydrography.....National Hydrography Dataset, 2010
Contours.....National Elevation Dataset, 2012
Boundaries.....Multiple sources; see metadata file 1972 - 2013



CONTOUR INTERVAL 10 FEET
NORTH AMERICAN VERTICAL DATUM OF 1988
This map was produced to conform with the
National Geospatial Program US Topo Product Standard, 2011.
A metadata file associated with this product is draft version 0.6.16



| | | | |
|---|---|---|-----------------|
| 1 | 2 | 3 | 1 Wilsonville |
| | | | 2 Beach |
| | | | 3 Crawley |
| | | | 4 Axson |
| 4 | | 5 | 5 Dixie Union |
| | | | 6 Coghelli |
| | | | 7 Pine Valley |
| 6 | 7 | 8 | 8 Waycross West |

ADJOINING QUADRANGLES

TALMO, GA
2014

