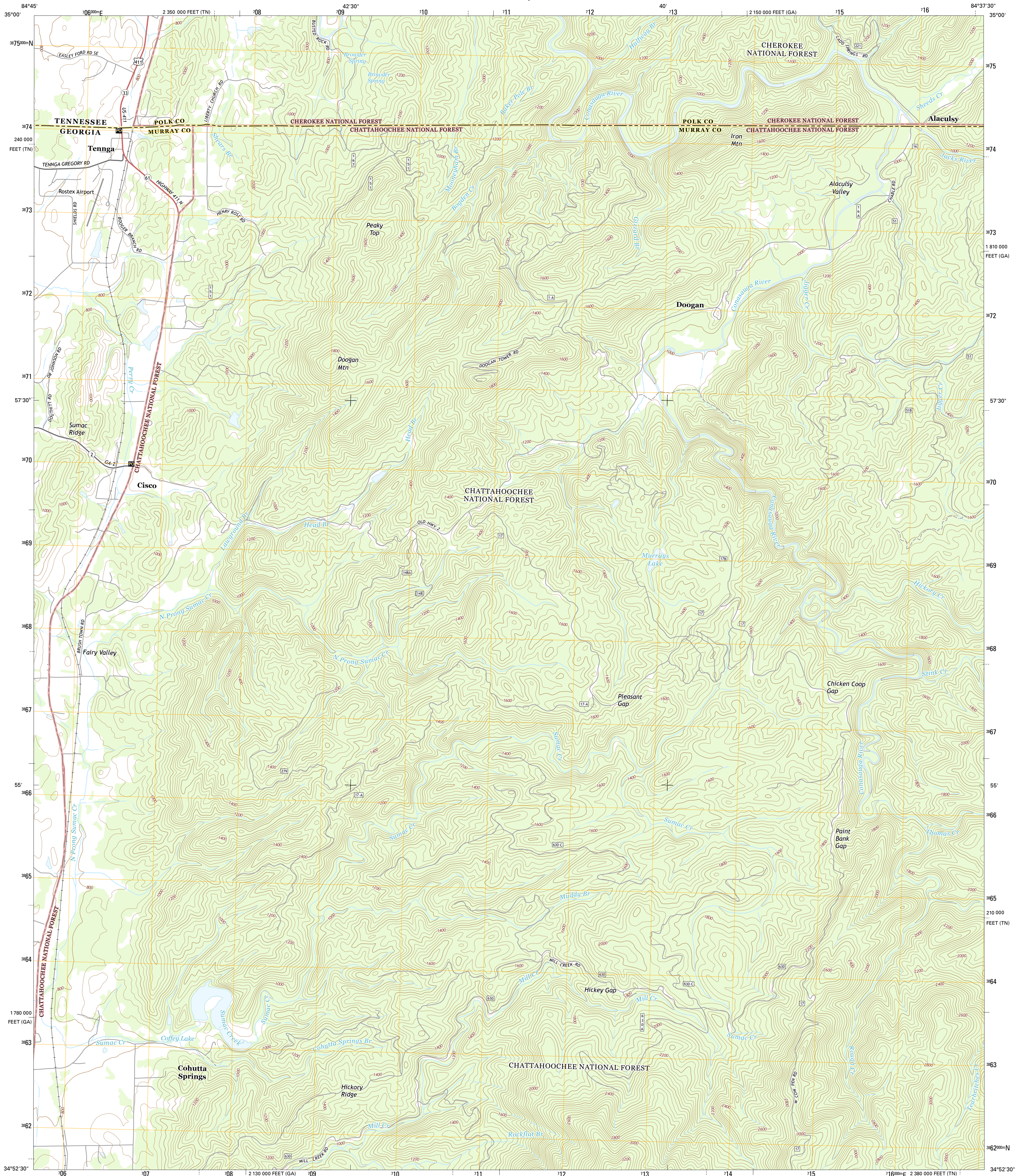




U.S. DEPARTMENT OF THE INTERIOR
U.S. GEOLOGICAL SURVEY



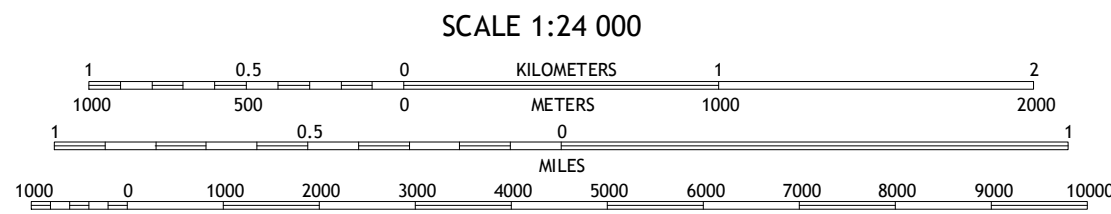
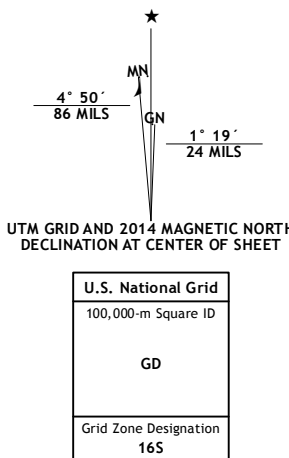
TENNGA QUADRANGLE
GEORGIA-TENNESSEE
7.5-MINUTE SERIES



Produced by the United States Geological Survey
North American Datum of 1983 (NAD83)
World Geodetic System of 1984 (WGS84). Projection and
1000-meter grid: Universal Transverse Mercator, Zone 16S
10 000-foot ticks: Georgia Coordinate System of 1983 (west
zone), Tennessee Coordinate System of 1983

This map is not a legal document. Boundaries may be
generalized for this map scale. Private lands within government
reservations may not be shown. Obtain permission before
entering private lands.

Imagery.....NAIP, September 2010
Roads.....HERE, ©2013
Roads within US Forest Service Lands.....FS Topo Data
with limited Forest Service updates, 2013
Names.....GNIS, 2013
Hydrography.....National Hydrography Dataset, 2010
Contours.....National Elevation Dataset, 2001
Boundaries.....Multiple sources; see metadata file 1972 - 2013



CONTOUR INTERVAL 40 FEET
NORTH AMERICAN VERTICAL DATUM OF 1988

This map was produced to conform with the
National Geospatial Program US Topo Product Standard, 2011.
A metadata file associated with this product is draft version 0.6.16



ROAD CLASSIFICATION	
Expressway	Local Connector
Secondary Hwy	Local Road
Interstate Route	US Route
FS Primary Route	FS Passenger Route
	FS High Clearance Route

1	2	3
4	5	6
7	8	

1 Felker
2 Parkville
3 Caney Creek
4 Beaverdale
5 Hemp Top
6 Chatsworth
7 Grandall
8 Dyer Gap

Check with local Forest Service unit
for current travel conditions and restrictions.

TENNGA, GA-TN
2014

