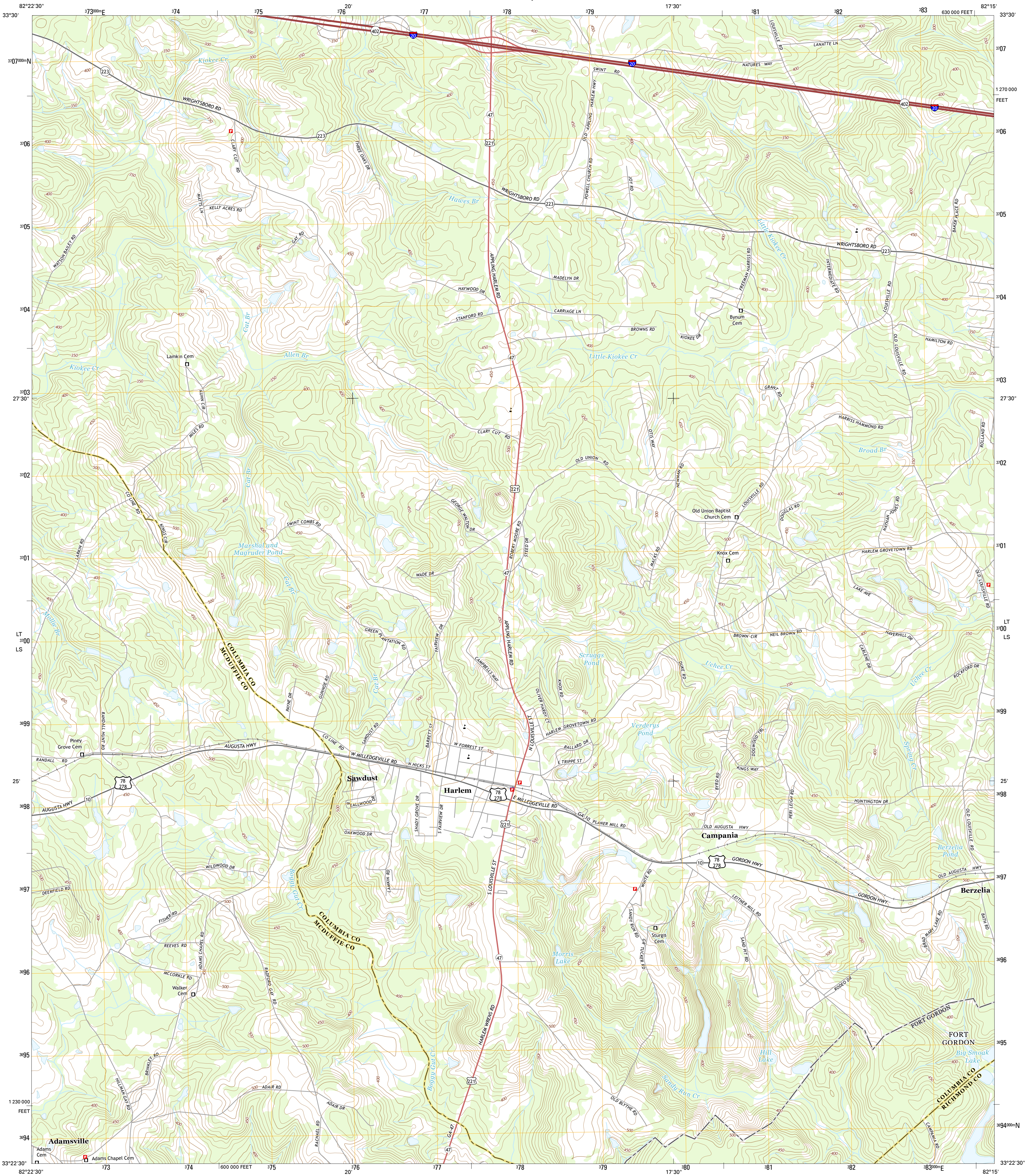




U.S. DEPARTMENT OF THE INTERIOR  
U.S. GEOLOGICAL SURVEY



HARLEM QUADRANGLE  
GEORGIA  
7.5-MINUTE SERIES



Produced by the United States Geological Survey  
North American Datum of 1983 (NAD83)  
World Geodetic System of 1984 (WGS84) Projection and  
1000-meter grid: Universal Transverse Mercator, Zone 17S  
10 000-foot ticks: Georgia Coordinate System of 1983 (east zone)

This map is not a legal document. Boundaries may be generalized for this map scale. Private lands within government reservations may not be shown. Obtain permission before entering private lands.

Imagery.....NAIP, July 2010  
Roads.....HERE, ©2013  
Names.....GNIS, 2013  
Hydrography.....National Hydrography Dataset, 2010  
Contours.....National Elevation Dataset, 2008  
Boundaries.....Multiple sources; see metadata file 1972 - 2013

UTM GRID AND 2014 MAGNETIC NORTH DECLINATION AT CENTER OF SHEET

U.S. National Grid  
100,000-m Square ID  
LT  
LS  
Grid Zone Designation  
17S

SCALE 1:24 000  
1 000 0 500 0 500 1000 2000  
KILOMETERS  
1 000 0 1000 2000 3000 4000 5000 6000 7000 8000 9000 10000  
METERS  
1 000 0 1000 2000 3000 4000 5000 6000 7000 8000 9000 10000  
FEET

CONTOUR INTERVAL 10 FEET  
NORTH AMERICAN VERTICAL DATUM OF 1988  
This map was produced to conform with the  
National Geospatial Program US Topo Product Standard, 2011.  
A metadata file associated with this product is draft version 0.6.16



ROAD CLASSIFICATION  
Expressway  
Secondary Hwy  
Ramp  
Local Connector  
Local Road  
4WD  
US Route  
State Route

1	2	3
4	5	6
7	8	9

1 Winfield  
2 Appling  
3 Evans  
4 Thomson East  
5 Grovetown  
6 Bowdens Pond  
7 Avondale  
8 Blythe

HARLEM, GA  
2014

