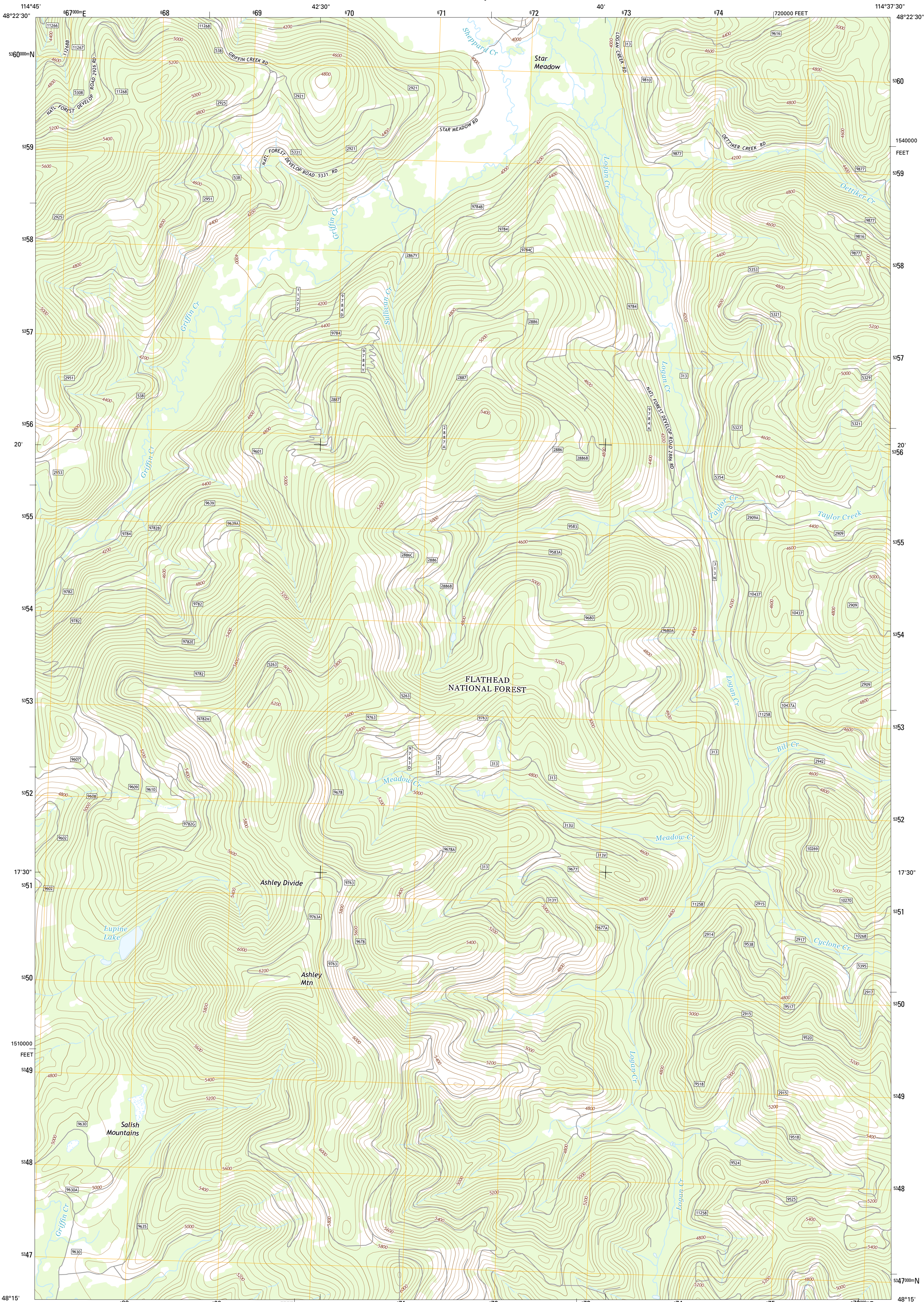




U.S. DEPARTMENT OF THE INTERIOR
U.S. GEOLOGICAL SURVEY



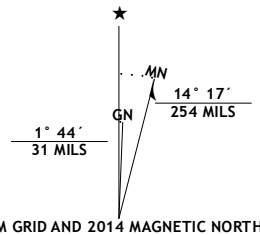
ASHLEY MOUNTAIN QUADRANGLE
MONTANA-FLATHEAD CO.
7.5-MINUTE SERIES



Produced by the United States Geological Survey
North American Datum of 1983 (NAD83)
World Geodetic System of 1984 (WGS84). Projection and
1 000-meter grid: Universal Transverse Mercator, Zone 11U
10 000-foot ticks: Montana Coordinate System of 1983

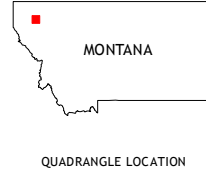
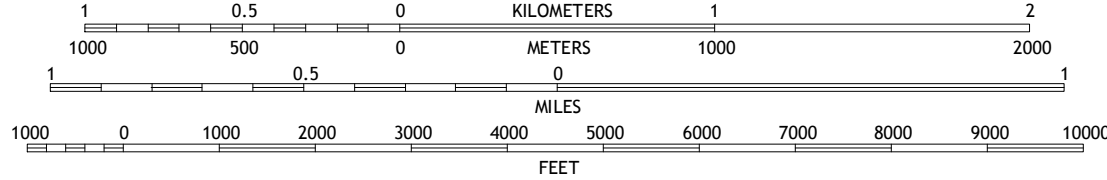
This map is not a legal document. Boundaries may be
generalized for this map scale. Private lands within government
reservations may not be shown. Obtain permission before
entering private lands.

Imagery.....NAIP, August 2011
Roads.....HERE, ©2013
Roads within US Forest Service Lands.....FSTopo Data
with limited Forest Service updates, 2013
Names.....National Hydrography Dataset, 2011
Hydrography.....National Hydrography Dataset, 2011
Contours.....National Elevation Dataset, 2005
Boundaries.....Multiple sources; see metadata file 1972 - 2013
Public Land Survey System.....BLM, 2011



| U.S. National Grid |
|-----------------------|
| 100,000-m Square ID |
| PP |
| Grid Zone Designation |
| 11U |

SCALE 1:24 000



QUADRANGLE LOCATION

| ROAD CLASSIFICATION | |
|-------------------------|--------------------|
| Expressway | Local Connector |
| Secondary Hwy | Local Road |
| Ramp | 4WD |
| Interstate Route | US Route |
| FS Primary Route | FS Passenger Route |
| FS High Clearance Route | State Route |

Check with local Forest Service unit
for current travel conditions and restrictions.

ASHLEY MOUNTAIN, MT
2014

| | | |
|---|---|---|
| 1 | 2 | 3 |
| 4 | 5 | 6 |
| 7 | 8 | 9 |

1 Dunsire Point
2 Johnson Peak
3 Tally Lake
4 Sylvia Lake
5 Lost Creek Divide
6 Dahl Lake
7 Pleasant Valley Mountain
8 Lone Lake

