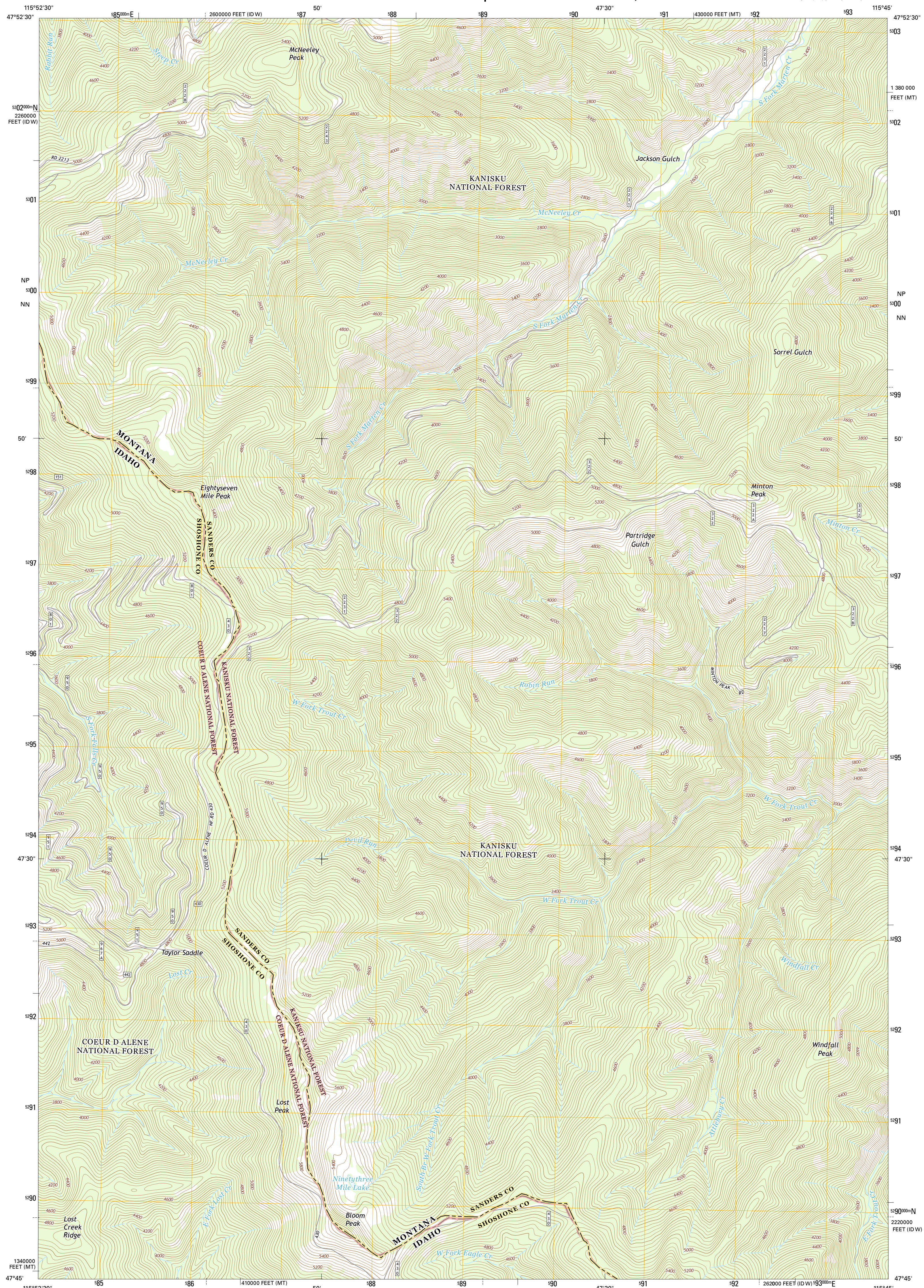




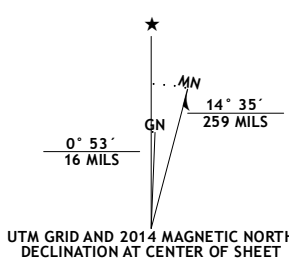
**BLOOM PEAK QUADRANGLE**  
**MONTANA-IDAHO**  
**7.5-MINUTE SERIES**



Produced by the United States Geological Survey  
North American Datum of 1983 (NAD83)  
World Geodetic System of 1984 (WGS84). Projection and  
1 000-meter grid: Universal Transverse Mercator, Zone 11T  
10 000-foot ticks: Montana Coordinate System of 1983, Idaho  
Coordinate System of 1983 (west zone)

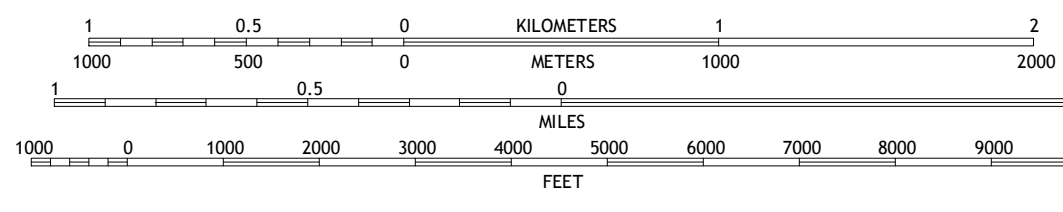
This map is not a legal document. Boundaries may be generalized for this map scale. Private lands within government reservations may not be shown. Obtain permission before entering private lands.

Imagery.....	.....NAIP,	August	2011
Roads.....	.....HERE,	©2013	
Roads within US Forest Service Lands.....	.....FSTopo	Data	
	with limited Forest Service updates,	2013	
Names.....	.....GNIS,	2013	
Hydrography.....	.....National Hydrography Dataset,	2011	
Contours.....	.....National Elevation Dataset,	2001	
Boundaries.....	.....Multiple sources; see metadata file	1972	2013
Public Land Survey System.....	.....BLM,		



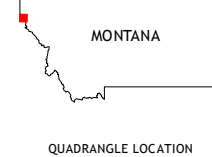
U.S. National Grid
100,000-m Square ID
$\frac{\text{NP}}{\text{NN}}^{5500}$
Grid Zone Designation
11T

SCALE 1:24 000



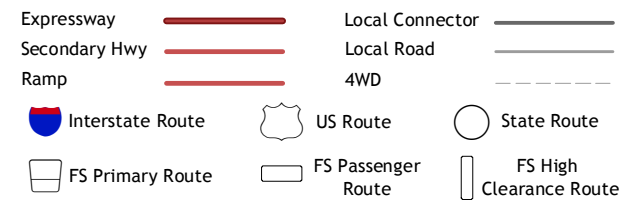
CONTOUR INTERVAL 40 FEET  
NORTH AMERICAN VERTICAL DATUM OF 1988

This map was produced to conform with the  
National Geospatial Program US Topo Product Standard, 2011.  
Data file associated with this product is draft version 0.6.16



3	1 Gem Peak
	2 Noxon
	3 Noxon Rap
5	4 Taylor Pea
	5 Larchwood
	6 Prichard
8	7 Murray
	8 Black Peak

## ROAD CLASSIFICATION



Check with local Forest Service unit  
for current travel conditions and restrictions.

BLOOM PEAK, MT-ID  
2014

