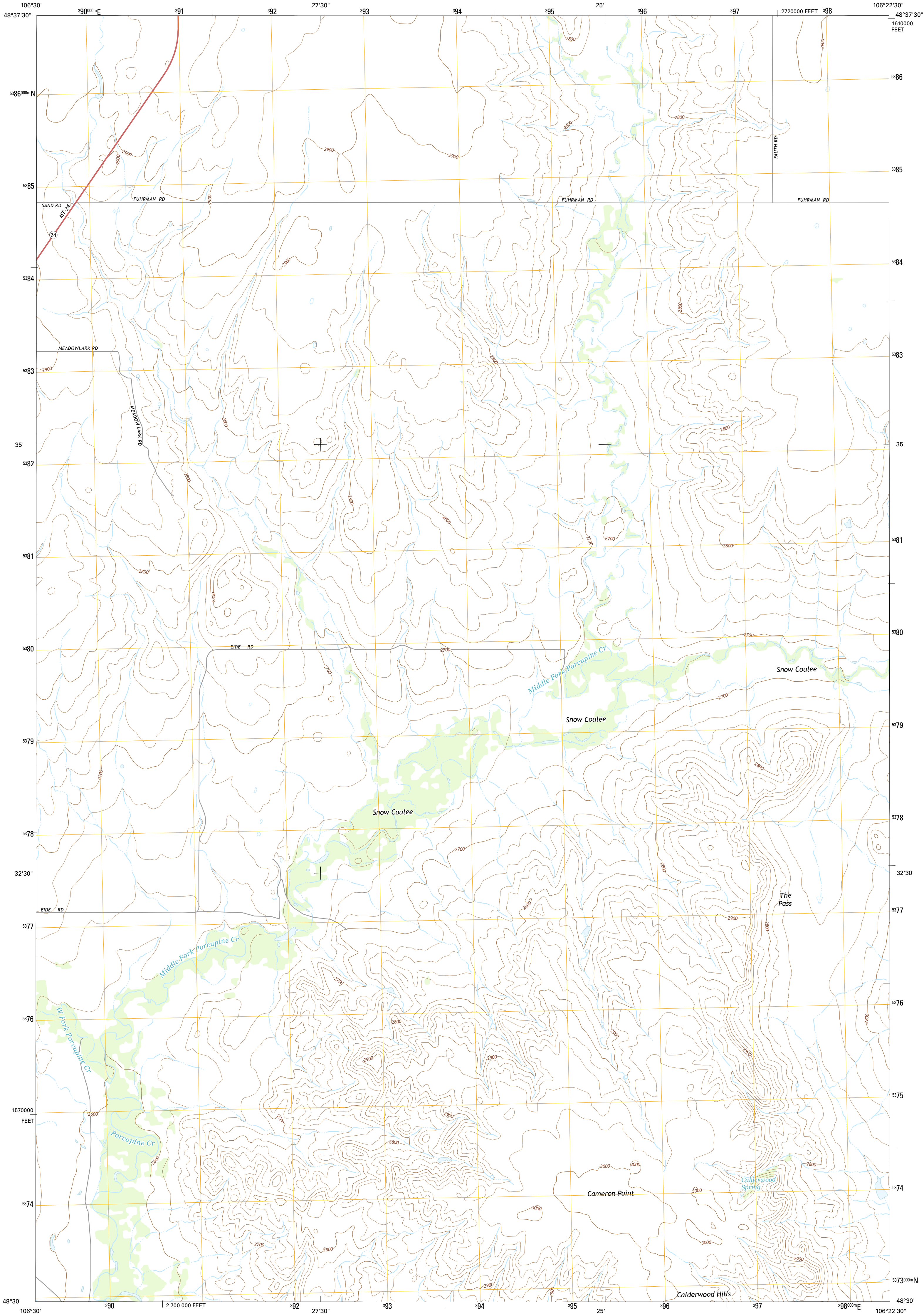




U.S. DEPARTMENT OF THE INTERIOR  
U.S. GEOLOGICAL SURVEY



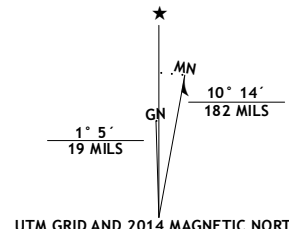
CAMERON POINT QUADRANGLE  
MONTANA-VALLEY CO.  
7.5-MINUTE SERIES



Produced by the United States Geological Survey  
North American Datum of 1983 (NAD83)  
World Geodetic System of 1984 (WGS84), Projection and  
1 000-meter grid; Universal Transverse Mercator, Zone 13U  
10 000-foot ticks: Montana Coordinate System of 1983

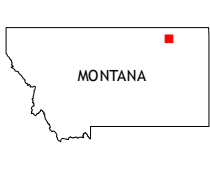
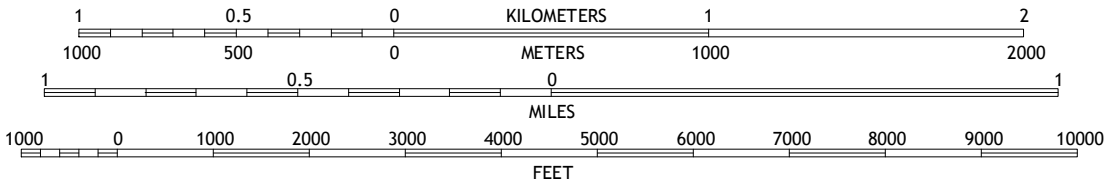
This map is not a legal document. Boundaries may be  
generalized for this map scale. Private lands within government  
reservations may not be shown. Obtain permission before  
entering private lands.

Imagery.....NAIP July 2011  
Roads.....HERE ©2013  
Names.....GNIS 2013  
Hydrography.....National Hydrography Dataset, 2011  
Contours.....National Elevation Dataset, 1999  
Boundaries.....Multiple sources; see metadata file 1972 - 2013  
Public Land Survey System.....BLM, 2011



U.S. National Grid	
100,000-m Square ID	CP
Grid Zone Designation	13U

SCALE 1:24 000



ROAD CLASSIFICATION	
Expressway	Local Connector
Secondary Hwy	Local Road
Ramp	4WD
Interstate Route	US Route
	State Route

1	2	3
4	5	
6	7	8

ADJOINING QUADRANGLES

1 Wards Dam  
2 Baylor  
3 Baylor NE  
4 Dry Fork Creek  
5 Baylor SE  
6 Chapman Coulee NE  
7 Lookout  
8 Bullhead Reservoir

CAMERON POINT, MT  
2014

