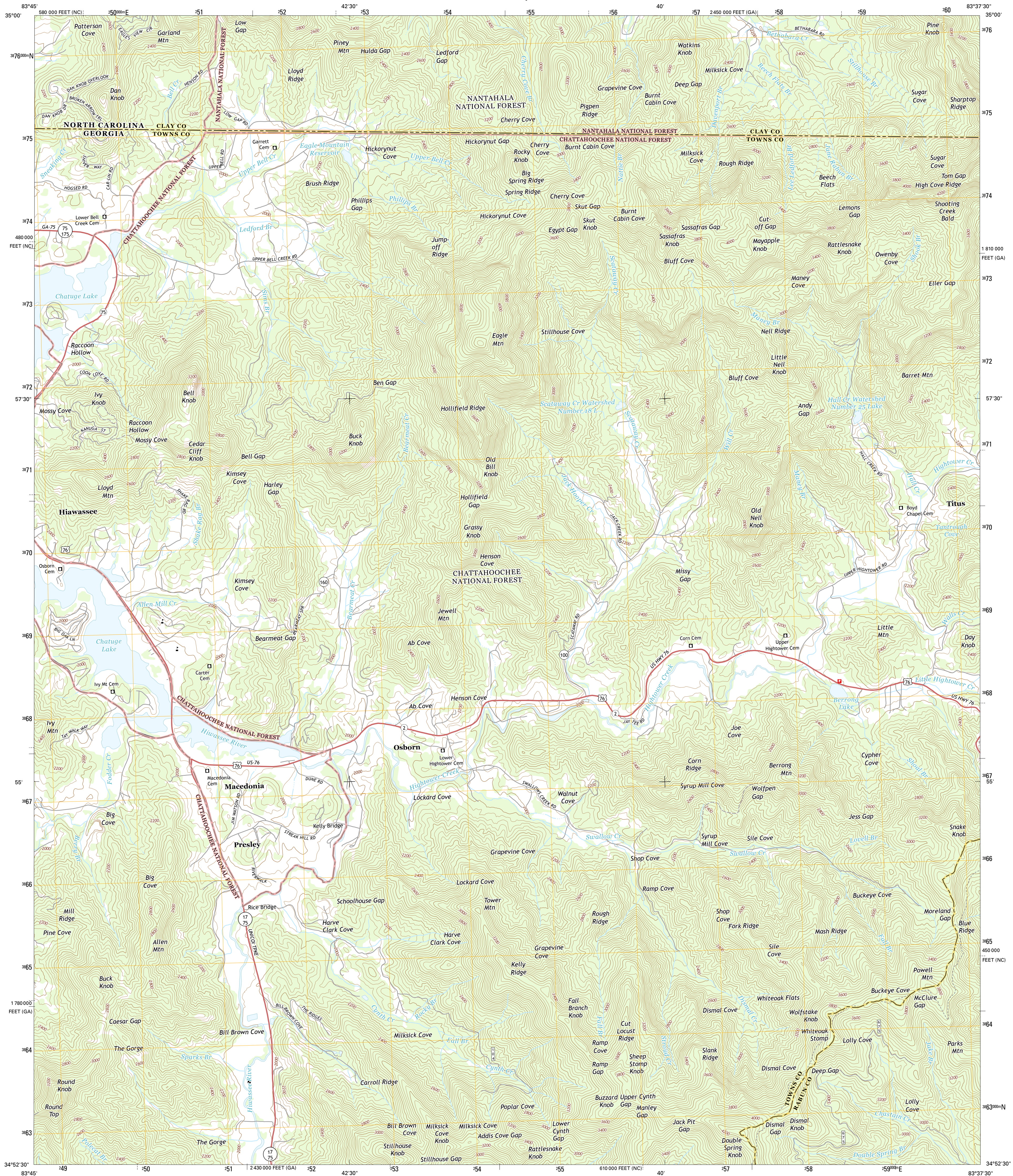




U.S. DEPARTMENT OF THE INTERIOR
U.S. GEOLOGICAL SURVEY



MACEDONIA QUADRANGLE
GEORGIA-NORTH CAROLINA
7.5-MINUTE SERIES



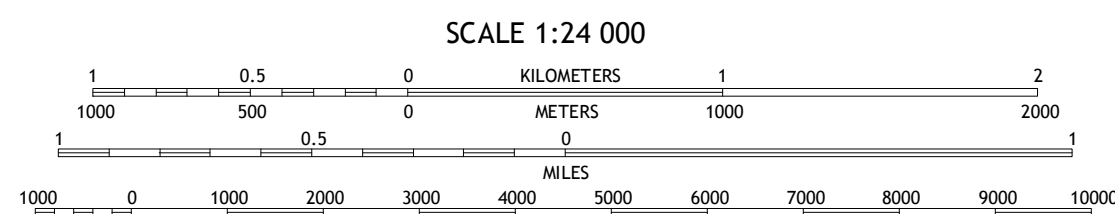
Produced by the United States Geological Survey
North American Datum of 1983 (NAD83)
World Geodetic System of 1984 (WGS84). Projection and
1 000-meter grid: Universal Transverse Mercator, Zone 17S
10 000-foot ticks: Georgia Coordinate System of 1983 (west
zone), North Carolina Coordinate System of 1983

This map is not a legal document. Boundaries may be
generalized for this map scale. Private lands within government
reservations may not be shown. Obtain permission before
entering private lands.

Imagery:.....NAIP, September 2010
Roads:.....HERE, ©2013
Roads within US Forest Service Lands:.....FS Topo Data
with limited Forest Service updates, 2013
Names:.....GNIS, 2013
Hydrography:.....National Hydrography Dataset, 2010
Contours:.....National Elevation Dataset, 2010
Boundaries:.....Multiple sources; see metadata file 1972 - 2013

UTM GRID AND 2014 MAGNETIC NORTH
DECLINATION AT CENTER OF SHEET

| |
|---|
| U.S. National Grid 100,000-m Square ID |
| KU |
| Grid Zone Designation 17S |



This map was produced to conform with the
National Geospatial Program US Topo Product Standard, 2011.
A metadata file associated with this product is draft version 0.6.16



| | | |
|---|---|---|
| 1 | 2 | 3 |
| 4 | 5 | 6 |
| 7 | 8 | 9 |

ADJOINING QUADRANGLES

1 Hayesville
2 Shooting Creek
3 Rainbow Springs
4 Hiwassee
5 Hightower Bald
6 Jacks Gap
7 Tray Mountain
8 Lake Burton

ROAD CLASSIFICATION

| | |
|------------------|-------------------------|
| Expressway | Local Connector |
| Secondary Hwy | Local Road |
| Ramp | 4WD |
| Interstate Route | US Route |
| FS Primary Route | FS Passenger Route |
| | FS High Clearance Route |

Check with local Forest Service unit
for current travel conditions and restrictions.

MACEDONIA, GA-NC
2014

