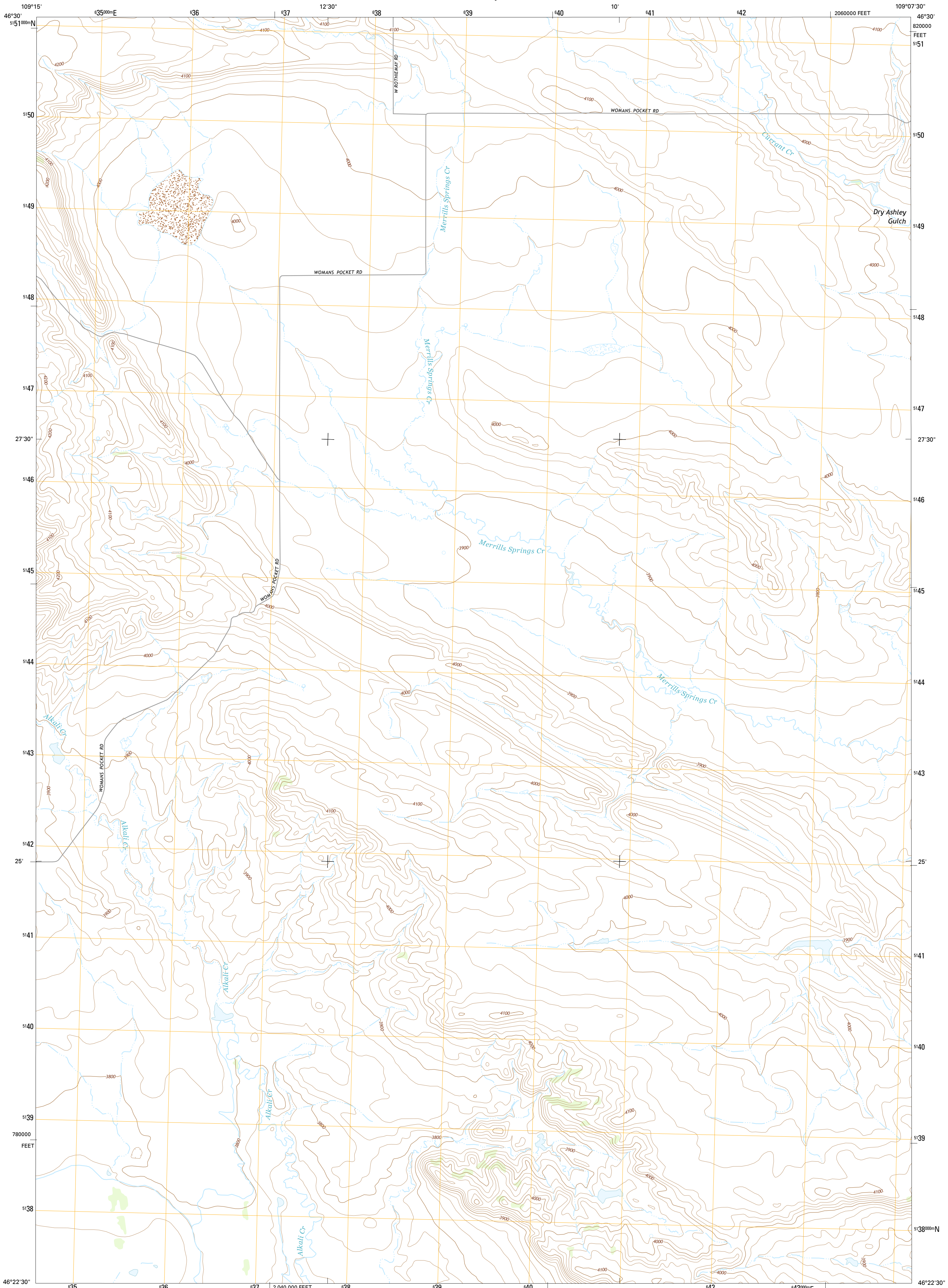




U.S. DEPARTMENT OF THE INTERIOR  
U.S. GEOLOGICAL SURVEY



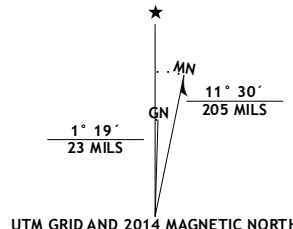
CUSHMAN NW QUADRANGLE  
MONTANA-GOLDEN VALLEY CO.  
7.5-MINUTE SERIES



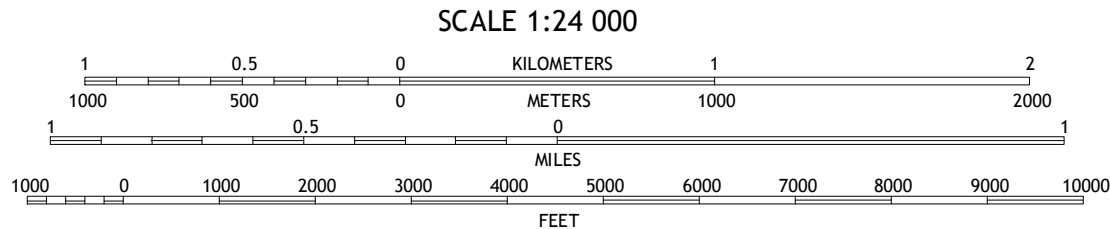
Produced by the United States Geological Survey  
North American Datum of 1983 (NAD83)  
World Geodetic System of 1984 (WGS84). Projection and  
1 000-meter grid: Universal Transverse Mercator, Zone 12T  
10 000-foot ticks: Montana Coordinate System of 1983

This map is not a legal document. Boundaries may be  
generalized for this map scale. Private lands within government  
reservations may not be shown. Obtain permission before  
entering private lands.

Imagery.....NAIP.....July.....2011  
Roads.....HERE.....©2013  
Names.....GNIS.....2013  
Hydrography.....National Hydrography Dataset.....2011  
Contours.....National Elevation Dataset.....2006  
Boundaries.....Multiple sources; see metadata file 1972-2013  
Public Land Survey System.....BLM.....2011



U.S. National Grid 100,000-m Square ID
XS
Grid Zone Designation 12T



CONTOUR INTERVAL 20 FEET  
NORTH AMERICAN VERTICAL DATUM OF 1988  
This map was produced to conform with the  
National Geospatial Program US Topo Product Standard, 2011.  
A metadata file associated with this product is draft version 0.6.16



ROAD CLASSIFICATION			
Expressway	Local Connector	Local Road	4WD
Secondary Hwy	Local Road	4WD	
Ramp	Interstate Route	US Route	State Route

1	2	3
4	5	6
7	8	9

ADJOINING QUADRANGLES

CUSHMAN NW, MT  
2014

