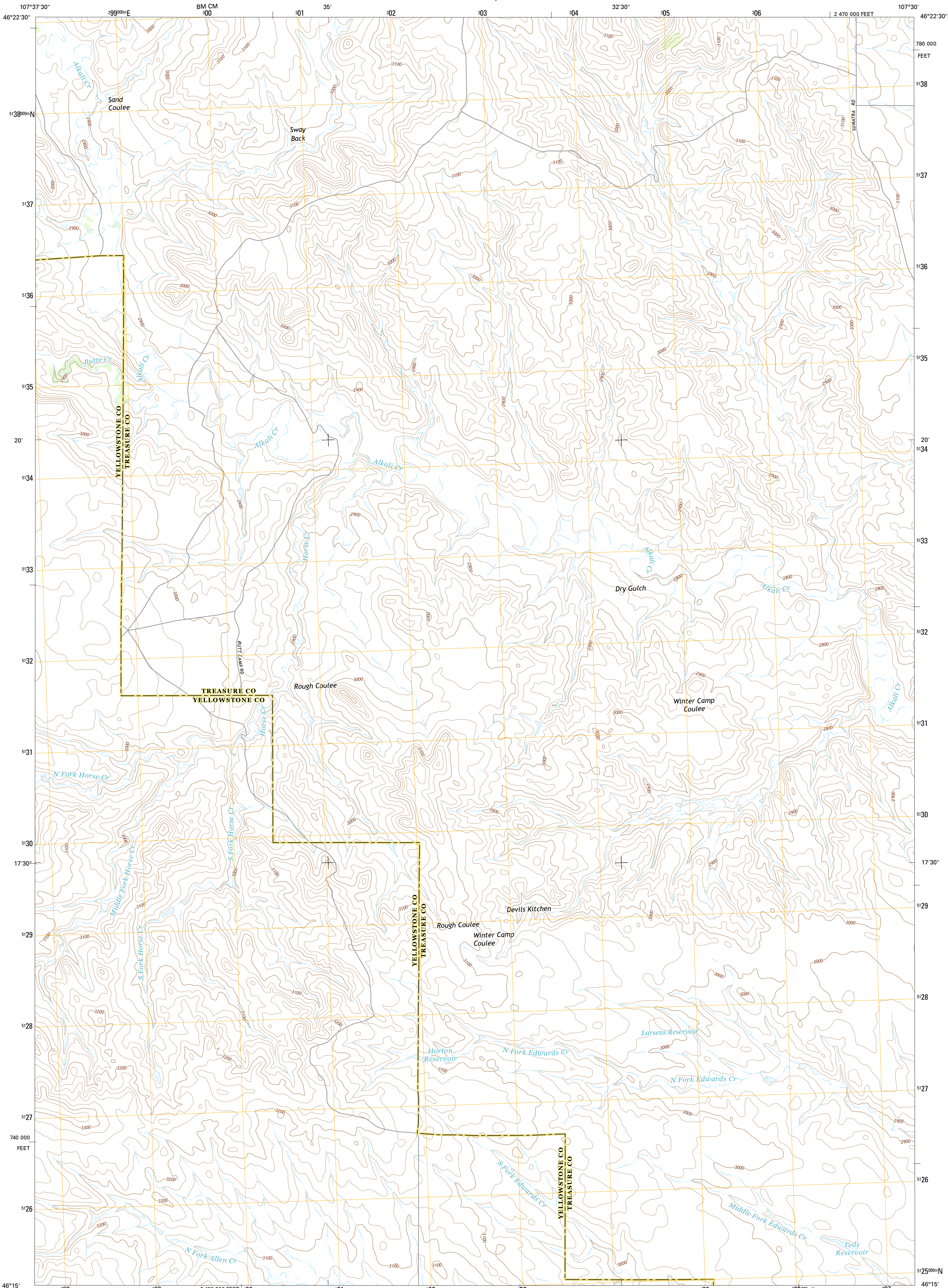




U.S. DEPARTMENT OF THE INTERIOR
U.S. GEOLOGICAL SURVEY



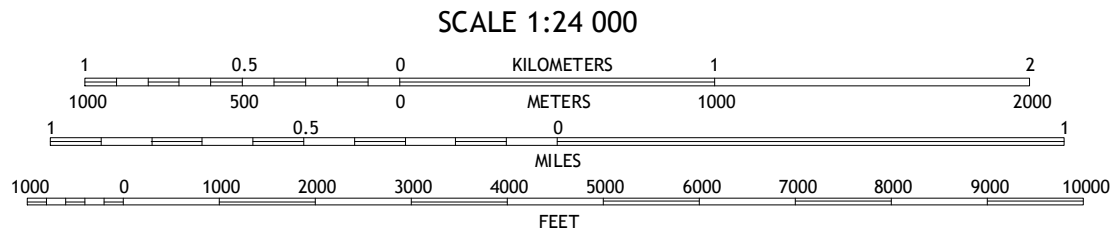
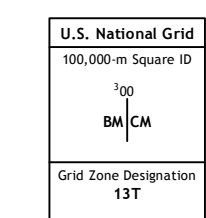
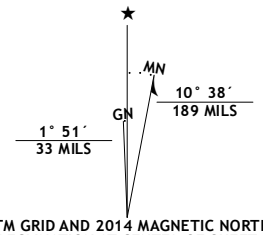
DEVILS KITCHEN QUADRANGLE
MONTANA
7.5-MINUTE SERIES



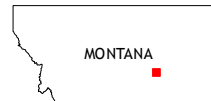
Produced by the United States Geological Survey
North American Datum of 1983 (NAD83)
World Geodetic System of 1984 (WGS84). Projection and
1 000-meter grid: Universal Transverse Mercator, Zone 13T
10 000-foot ticks: Montana Coordinate System of 1983

This map is not a legal document. Boundaries may be
generalized for this map scale. Private lands within government
reservations may not be shown. Obtain permission before
entering private lands.

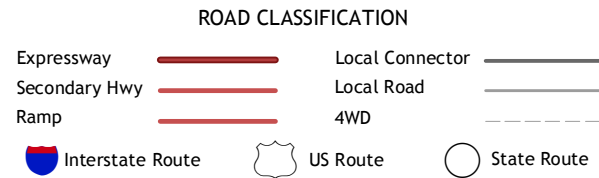
Imagery.....NAIP July 2011
Roads.....HERE ©2013
Names.....GNIS 2013
Hydrography.....National Hydrography Dataset, 2011
Contours.....National Elevation Dataset, 2006
Boundaries.....Multiple sources; see metadata file 1972 - 2013
Public Land Survey System.....BLM, 2011



CONTOUR INTERVAL 20 FEET
NORTH AMERICAN VERTICAL DATUM OF 1988
This map was produced to conform with the
National Geospatial Program US Topo Product Standard, 2011.
A metadata file associated with this product is draft version 0.6.16



QUADRANGLE LOCATION



1	2	3
4	5	6
7	8	9

1 Weed Creek East
2 Ruskosky Ridge
3 McKonkey Creek
4 Mexican Buttes
5 Rancher Cemetery
6 Coal Bank Creek
7 Custer
8 Bighorn

DEVILS KITCHEN, MT
2014

