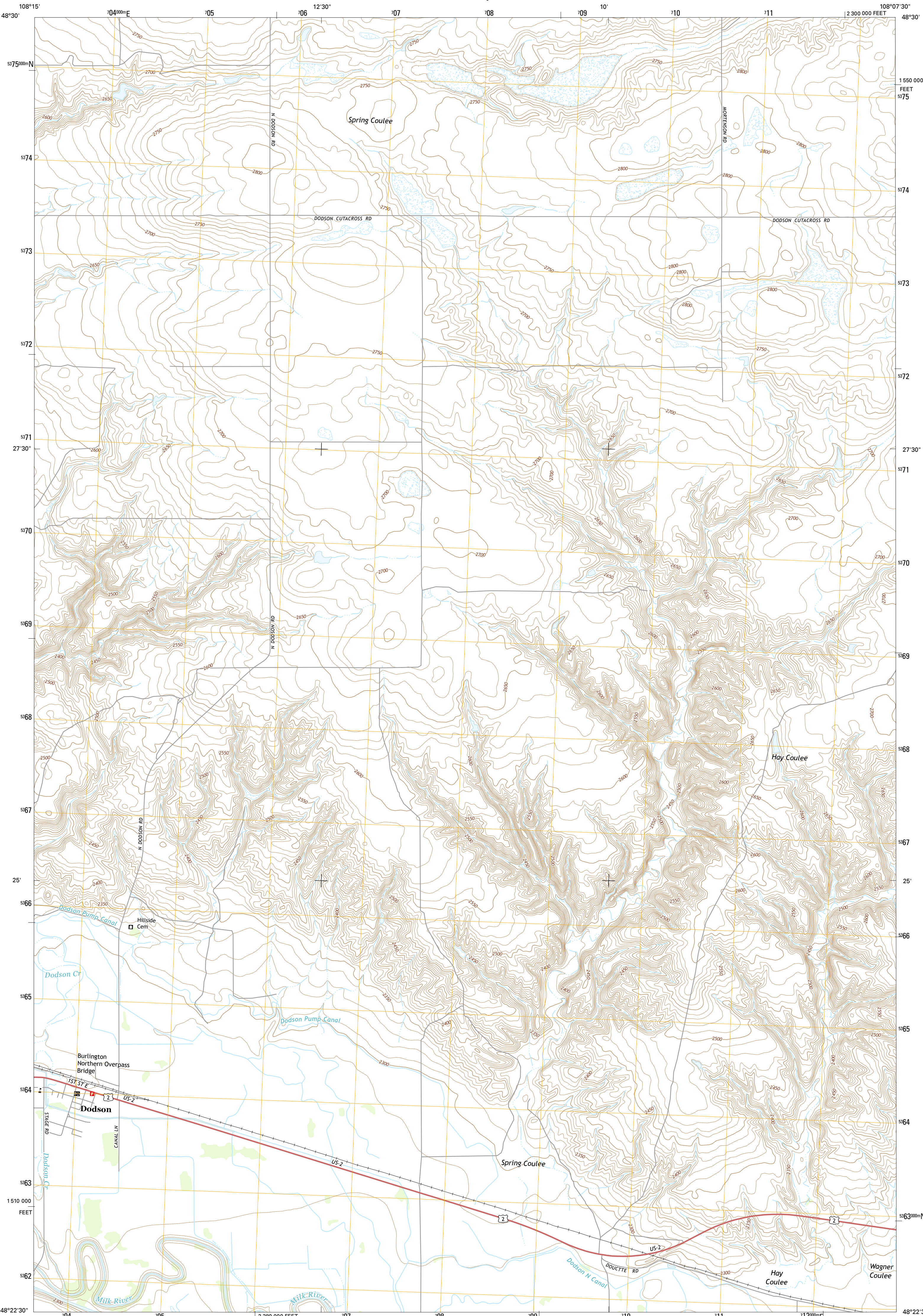




U.S. DEPARTMENT OF THE INTERIOR  
U.S. GEOLOGICAL SURVEY



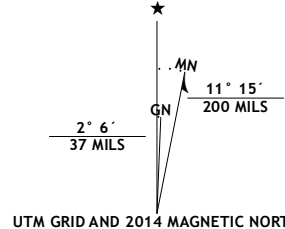
DODSON QUADRANGLE  
MONTANA-PHILLIPS CO.  
7.5-MINUTE SERIES



Produced by the United States Geological Survey  
North American Datum of 1983 (NAD83)  
World Geodetic System of 1984 (WGS84). Projection and  
1 000-meter grid: Universal Transverse Mercator, Zone 12U  
10 000-foot ticks: Montana Coordinate System of 1983

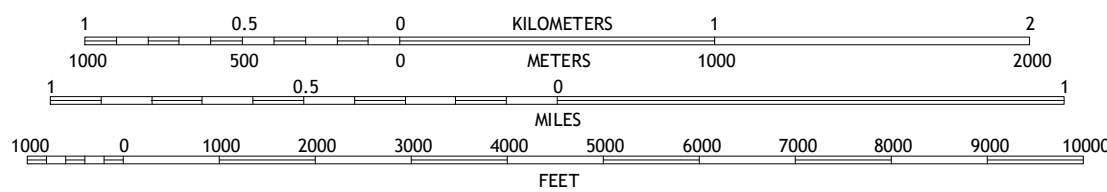
This map is not a legal document. Boundaries may be  
generalized for this map scale. Private lands within government  
reservations may not be shown. Obtain permission before  
entering private lands.

Imagery.....NAIP, July 2011  
Roads.....HERE, ©2013  
Names.....GNIS, 2013  
Hydrography.....National Hydrography Dataset, 2011  
Contours.....National Elevation Dataset, 1999  
Boundaries.....Multiple sources; see metadata file 1972 - 2013  
Public Land Survey System.....BLM, 2011






| U.S. National Grid    |
|-----------------------|
| 100,000-m Square ID   |
| YU                    |
| Grid Zone Designation |
| 12U                   |

SCALE 1:24 000



QUADRANGLE LOCATION

| ROAD CLASSIFICATION  |   |
|--|---|
| Expressway   | Local Connector   |
| Secondary Hwy  | Local Road  |
| Ramp   | 4WD   |
|  Interstate Route |  US Route    |
|  |  State Route |

CONTOUR INTERVAL 10 FEET  
NORTH AMERICAN VERTICAL DATUM OF 1988

This map was produced to conform with the  
National Geospatial Program US Topo Product Standard, 2011.  
A metadata file associated with this product is draft version 0.6.16

|   |   |   |
|---|---|---|
| 1 | 2 | 3 |
| 4 | 5 | 6 |
| 7 | 8 | 9 |

ADJOINING QUADRANGLES

1 Down Reservoir  
2 Hubert Hill SW  
3 Hubert Hill SE  
4 Dodson Dam  
5 Dodson NE  
6 Coburg SE  
7 Cow Creek  
8 Wagner

DODSON, MT  
2014

