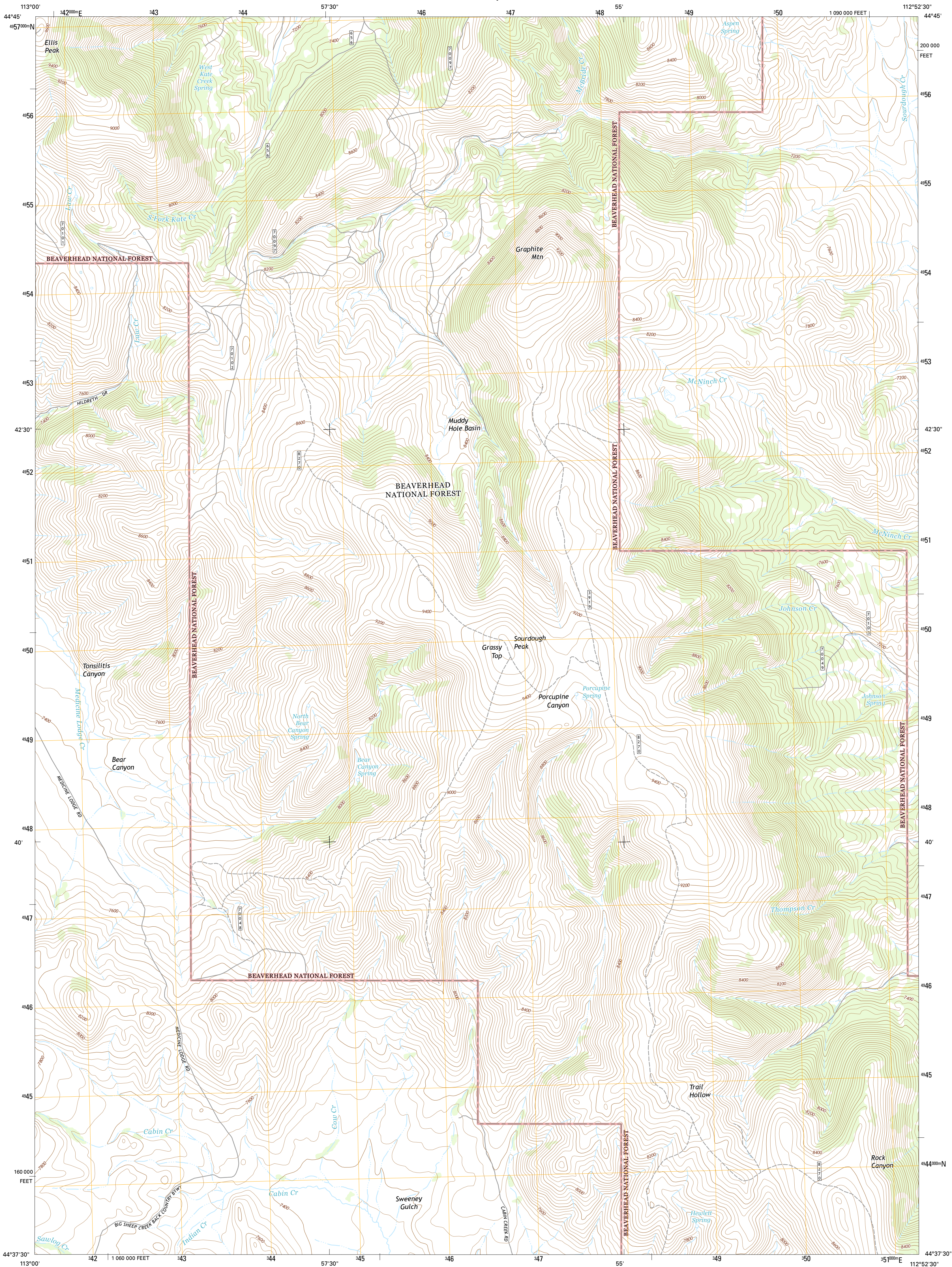




U.S. DEPARTMENT OF THE INTERIOR  
U.S. GEOLOGICAL SURVEY



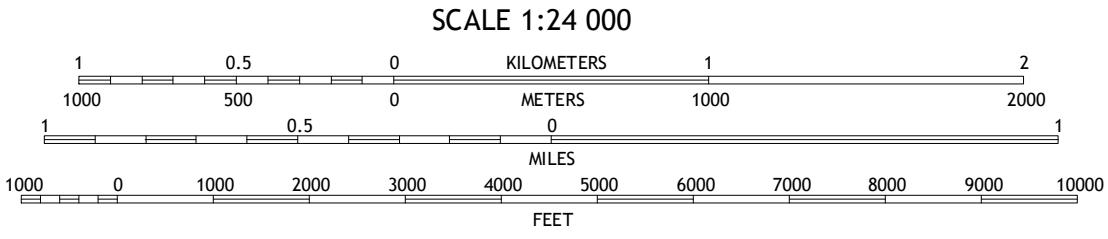
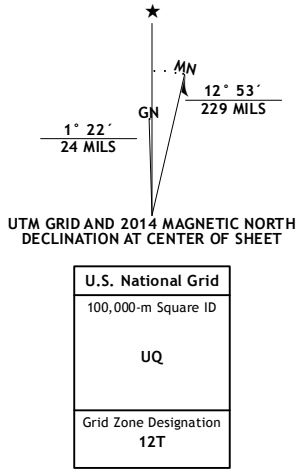
GRAPHITE MOUNTAIN QUADRANGLE  
MONTANA-BEAVERHEAD CO.  
7.5-MINUTE SERIES



**Produced by the United States Geological Survey**  
North American Datum of 1983 (NAD83)  
World Geodetic System of 1984 (WGS84). Projection and  
1 000-meter grid: Universal Transverse Mercator, Zone 12T  
10 000-foot ticks: Montana Coordinate System of 1983

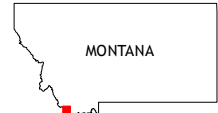
This map is not a legal document. Boundaries may be  
generalized for this map scale. Private lands within government  
reservations may not be shown. Obtain permission before  
entering private lands.

Imagery.....NAIP, August 2011  
Roads.....HERE, ©2013  
Roads within US Forest Service Lands.....FS Topo Data  
with limited Forest Service updates, 2013  
Names.....GNIS, 2013  
Hydrography.....National Hydrography Dataset, 2011  
Contours.....National Elevation Dataset, 2005  
Boundaries.....Multiple sources; see metadata file 1972 - 2013  
Public Land Survey System.....BLM, 2011



CONTOUR INTERVAL 40 FEET  
NORTH AMERICAN VERTICAL DATUM OF 1988

This map was produced to conform with the  
National Geospatial Program US Topo Product Standard, 2011.  
A metadata file associated with this product is draft version 0.6.16



QUADRANGLE LOCATION

1	2	3
4	5	6
7	8	9

ADJOINING QUADRANGLES

1 Medicine Lodge Peak  
2 Deer Canyon  
3 Kidd  
4 Teepee Mountain  
5 Dixon Mountain  
6 Morrison Lake  
7 Island Butte  
8 Caboose Canyon

**ROAD CLASSIFICATION**

Expressway  
Secondary Hwy  
Ramp

Interstate Route  
US Route  
FS Primary Route

Local Connector  
Local Road  
4WD  
FS Passenger Route  
FS High Clearance Route

State Route

Check with local Forest Service unit  
for current travel conditions and restrictions.

GRAPHITE MOUNTAIN, MT  
2014

