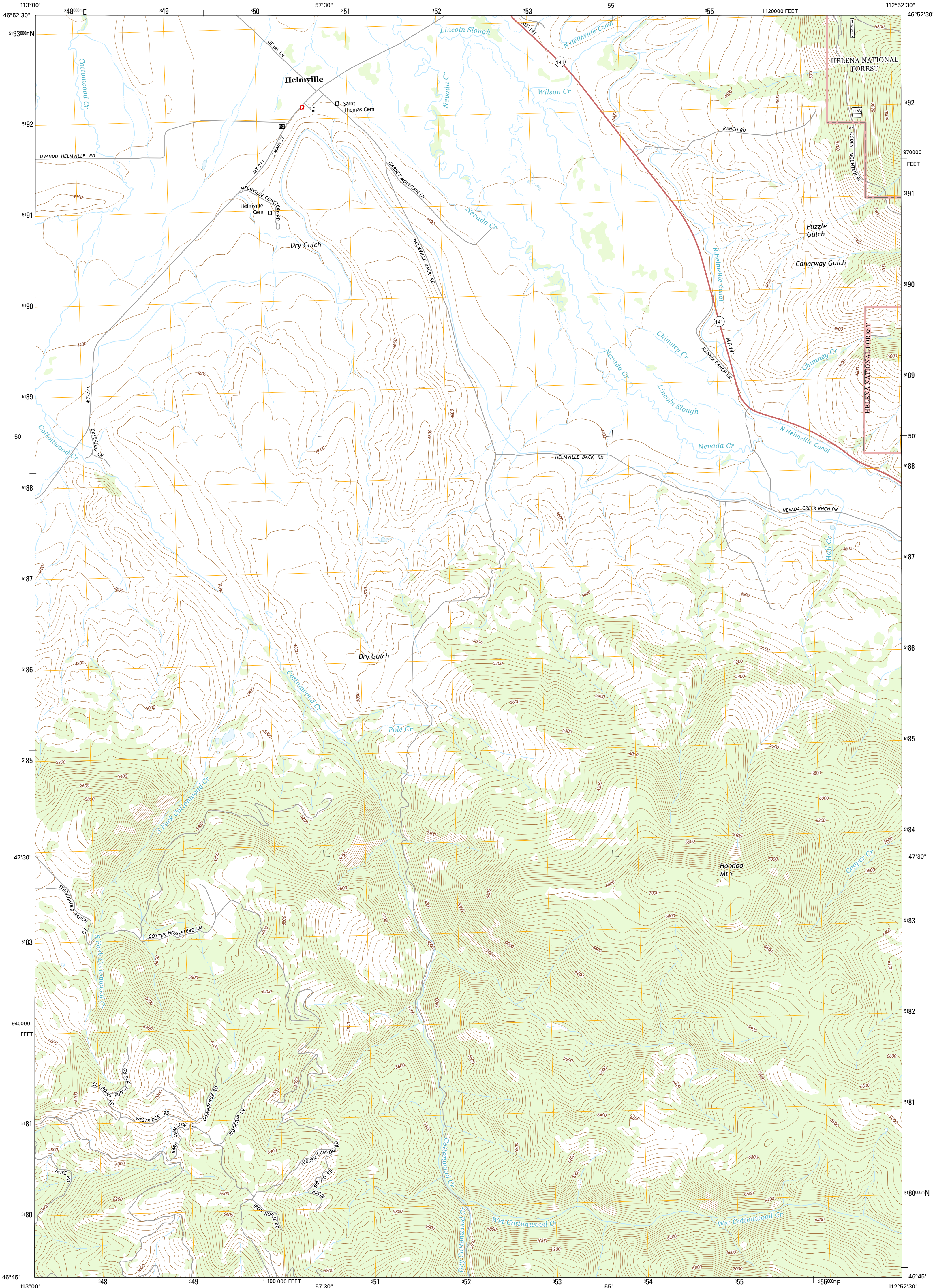




U.S. DEPARTMENT OF THE INTERIOR
U.S. GEOLOGICAL SURVEY



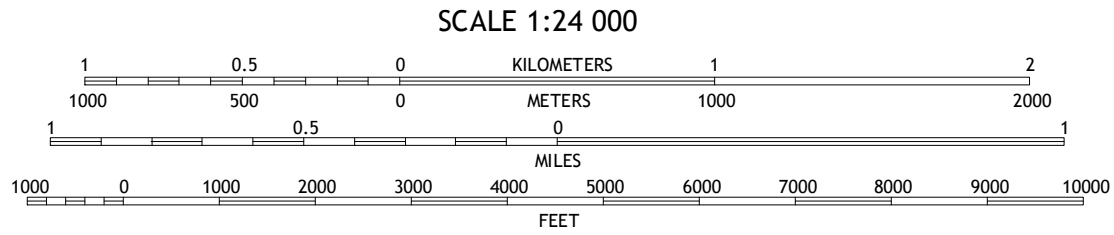
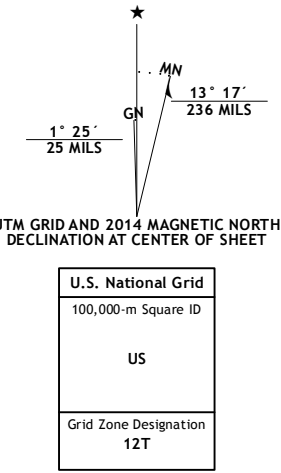
HELMVILLE QUADRANGLE
MONTANA-POWELL CO.
7.5-MINUTE SERIES



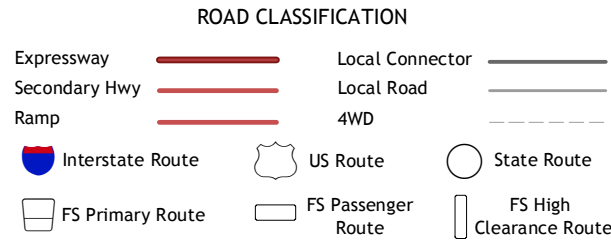
Produced by the United States Geological Survey
North American Datum of 1983 (NAD83)
World Geodetic System of 1984 (WGS84). Projection and
1 000-meter grid: Universal Transverse Mercator, Zone 12T
10 000-foot ticks: Montana Coordinate System of 1983

This map is not a legal document. Boundaries may be
generalized for this map scale. Private lands within government
reservations may not be shown. Obtain permission before
entering private lands.

Imagery.....NAIP, August 2011
Roads.....HERE, ©2013
Roads within US Forest Service Lands.....FSTopo Data
with limited Forest Service updates, 2013
Names.....GNIS, 2013
Hydrography.....National Hydrography Dataset, 2011
Contours.....National Elevation Dataset, 2001
Boundaries.....Multiple sources; see metadata file 1972-2013
Public Land Survey System.....BLM, 2011



QUADRANGLE LOCATION



Check with local Forest Service unit
for current travel conditions and restrictions.

HELMVILLE, MT
2014

1	2	3
4	5	6
7	8	9

1 Browns Lake
2 Marcum Mountain
3 Moose Creek
4 Chimney Lakes
5 Nevada Lake
6 Limestone Ridge
7 Bailey Mountain
8 Windy Rock



NSN 7560-01-000-0000
U.S. GEOLOGICAL SURVEY
MONTANA-POWELL CO.
HELMVILLE QUADRANGLE
7.5-MINUTE SERIES
2014