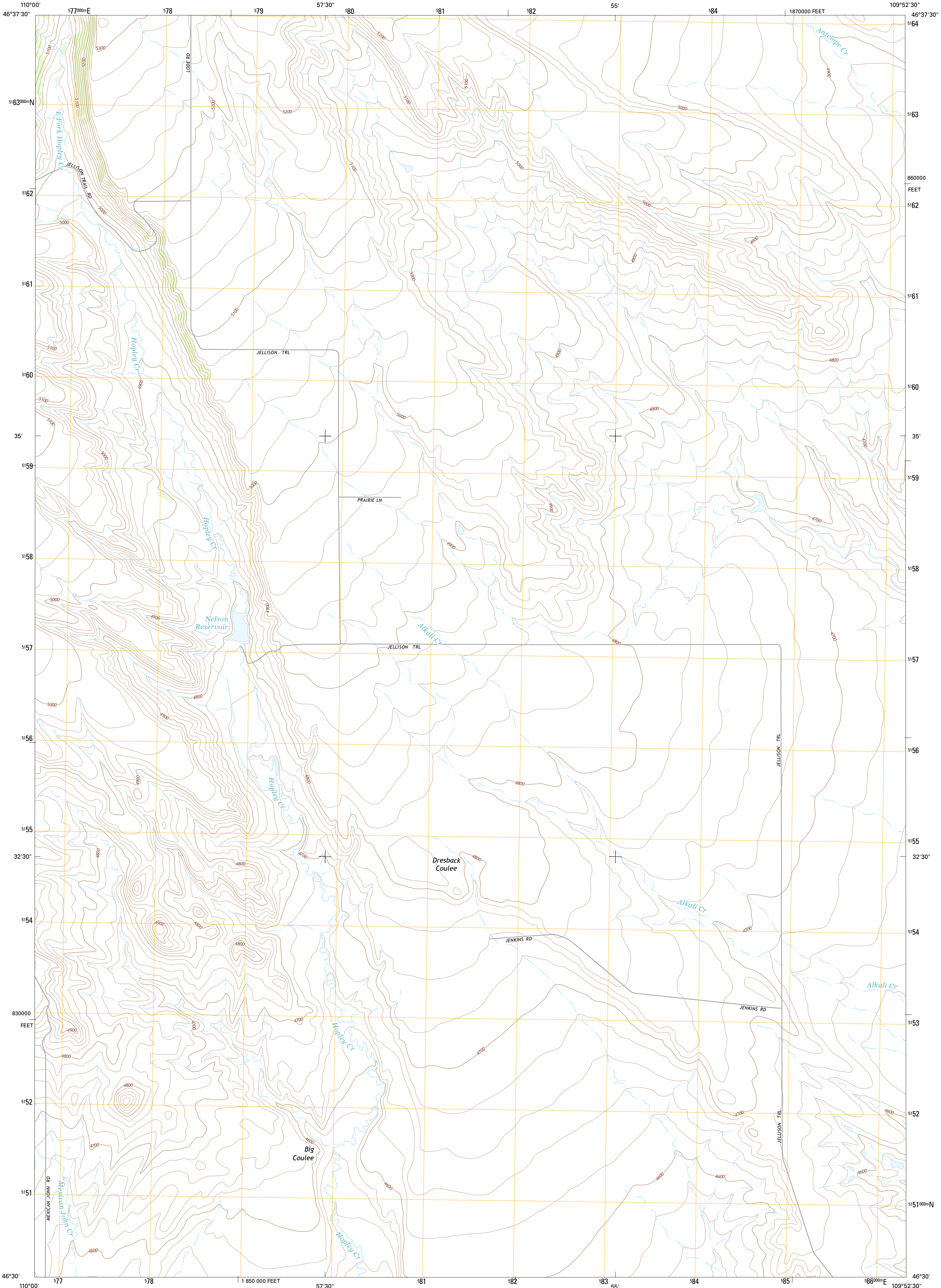




U.S. DEPARTMENT OF THE INTERIOR  
U.S. GEOLOGICAL SURVEY



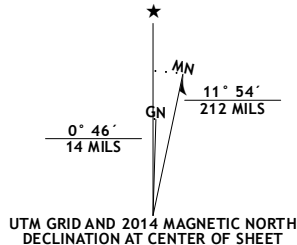
HOPLEY CREEK NORTH QUADRANGLE  
MONTANA-WHEATLAND CO.  
7.5-MINUTE SERIES



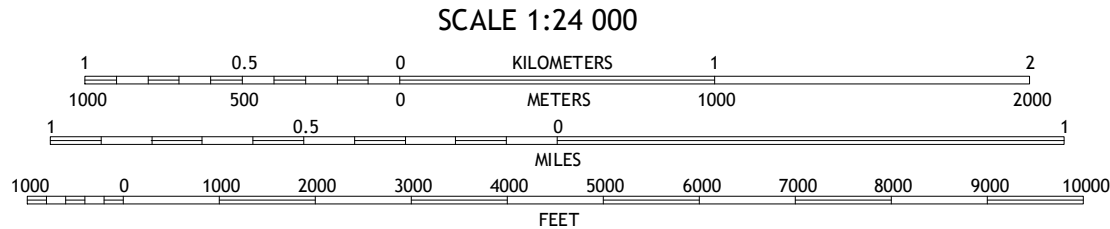
**Produced by the United States Geological Survey**  
North American Datum of 1983 (NAD83)  
World Geodetic System of 1984 (WGS84). Projection and  
1 000-meter grid: Universal Transverse Mercator, Zone 12T  
10 000-foot ticks: Montana Coordinate System of 1983

This map is not a legal document. Boundaries may be  
generalized for this map scale. Private lands within government  
reservations may not be shown. Obtain permission before  
entering private lands.

Imagery.....NAIP, August 2011  
Roads.....HERE, ©2013  
Names.....GNIS, 2013  
Hydrography.....National Hydrography Dataset, 2011  
Contours.....National Elevation Dataset, 2006  
Boundaries.....Multiple sources; see metadata file 1972 - 2013  
Public Land Survey System.....BLM, 2011



|                       |
|-----------------------|
| U.S. National Grid    |
| 100,000-m Square ID   |
| WS                    |
| Grid Zone Designation |
| 12T                   |



CONTOUR INTERVAL 20 FEET  
NORTH AMERICAN VERTICAL DATUM OF 1988  
This map was produced to conform with the  
National Geospatial Program US Topo Product Standard, 2011.  
A metadata file associated with this product is draft version 0.6.16



QUADRANGLE LOCATION

| ROAD CLASSIFICATION |                 |
|---------------------|-----------------|
| Expressway          | Local Connector |
| Secondary Hwy       | Local Road      |
| Ramp                | 4WD             |
| Interstate Route    | US Route        |
|                     | State Route     |

|   |   |   |
|---|---|---|
| 1 | 2 | 3 |
| 4 | 5 | 6 |
| 7 | 8 |   |

1 Jellison Place  
2 Mead Creek  
3 Judith Gap  
4 Haymaker Ranch  
5 Oka  
6 Twodot  
7 Hopley Creek South  
8 Harlowton

HOPLEY CREEK NORTH, MT  
2014

