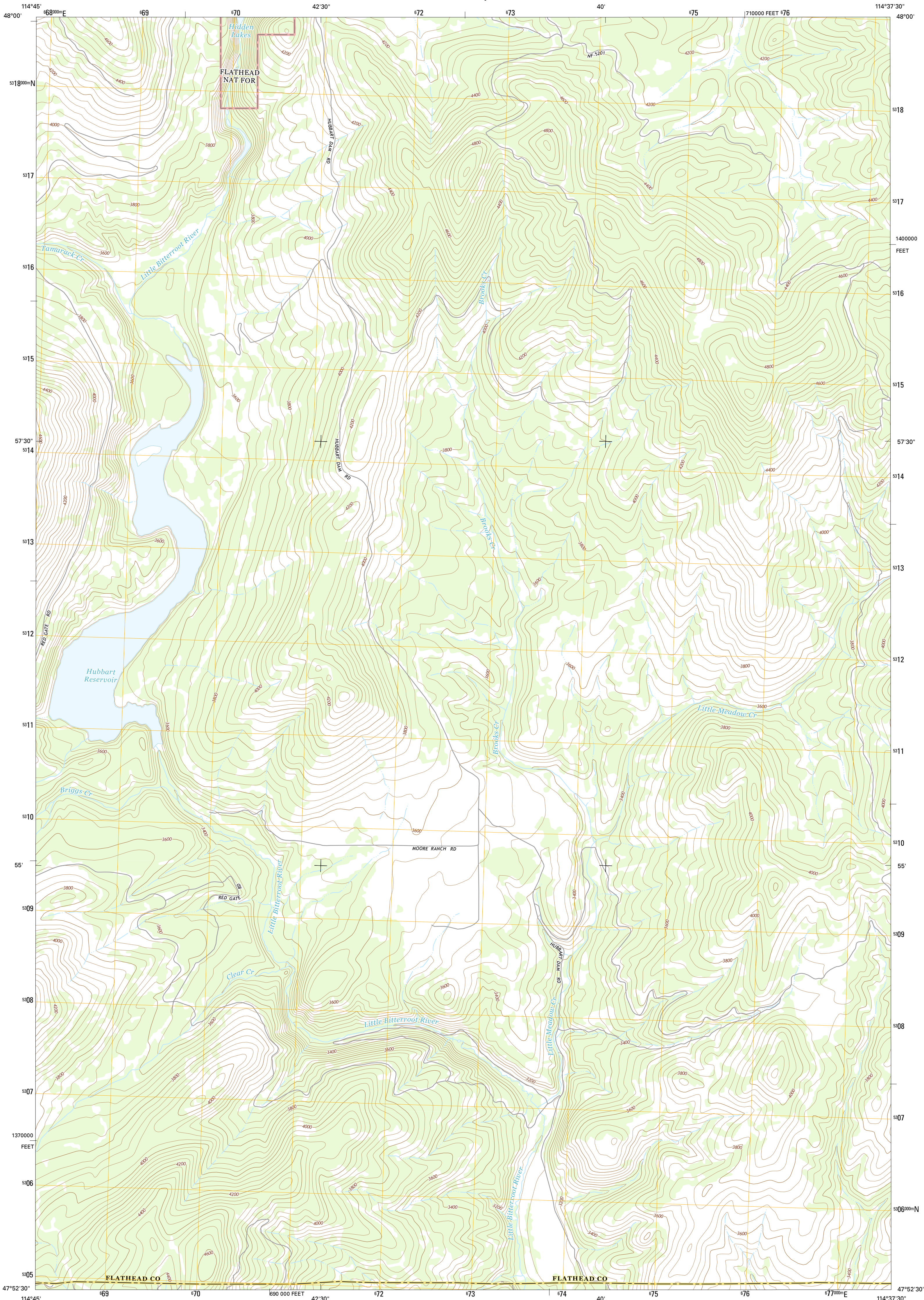




U.S. DEPARTMENT OF THE INTERIOR
U.S. GEOLOGICAL SURVEY



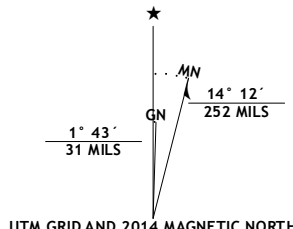
HUBBART RESERVOIR QUADRANGLE
MONTANA
7.5-MINUTE SERIES



Produced by the United States Geological Survey
North American Datum of 1983 (NAD83)
World Geodetic System of 1984 (WGS84). Projection and
1 000-meter grid: Universal Transverse Mercator, Zone 11T
10 000-foot ticks: Montana Coordinate System of 1983

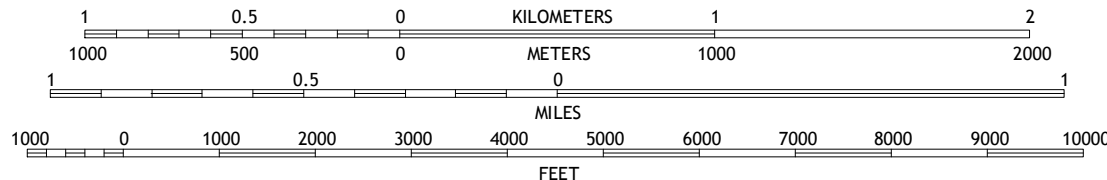
This map is not a legal document. Boundaries may be
generalized for this map scale. Private lands within government
reservations may not be shown. Obtain permission before
entering private lands.

Imagery.....NAIP, August 2011
Roads.....HERE, ©2013
Roads within US Forest Service Lands.....FSTopo Data
with limited Forest Service updates, 2013
Names.....GNIS, 2013
Hydrography.....National Hydrography Dataset, 2011
Contours.....National Elevation Dataset, 1999
Boundaries.....Multiple sources; see metadata file 1972 - 2013
Public Land Survey System.....BLM, 2011



| U.S. National Grid |
|-----------------------|
| 100,000-m Square ID |
| PP |
| Grid Zone Designation |
| 11T |

SCALE 1:24 000



CONTOUR INTERVAL 40 FEET
NORTH AMERICAN VERTICAL DATUM OF 1988
This map was produced to conform with the
National Geospatial Program US Topo Product Standard, 2011.
A metadata file associated with this product is draft version 0.6.16



QUADRANGLE LOCATION

| ROAD CLASSIFICATION | |
|---------------------|-------------------------|
| Expressway | Local Connector |
| Secondary Hwy | Local Road |
| Ramp | 4WD |
| Interstate Route | US Route |
| FS Primary Route | FS Passenger Route |
| | FS High Clearance Route |

Check with local Forest Service unit
for current travel conditions and restrictions.

HUBBART RESERVOIR, MT
2014

| | | |
|---|---|---|
| 1 | 2 | 3 |
| 4 | 5 | |
| 6 | 7 | 8 |

ADJOINING QUADRANGLES

1 McGregor Peak
2 Marion
3 Haskill Mountain
4 Hurr Peak
5 Kofford Ridge
6 Bassou Peak
7 Mill Pocket Creek
8 Niwara

