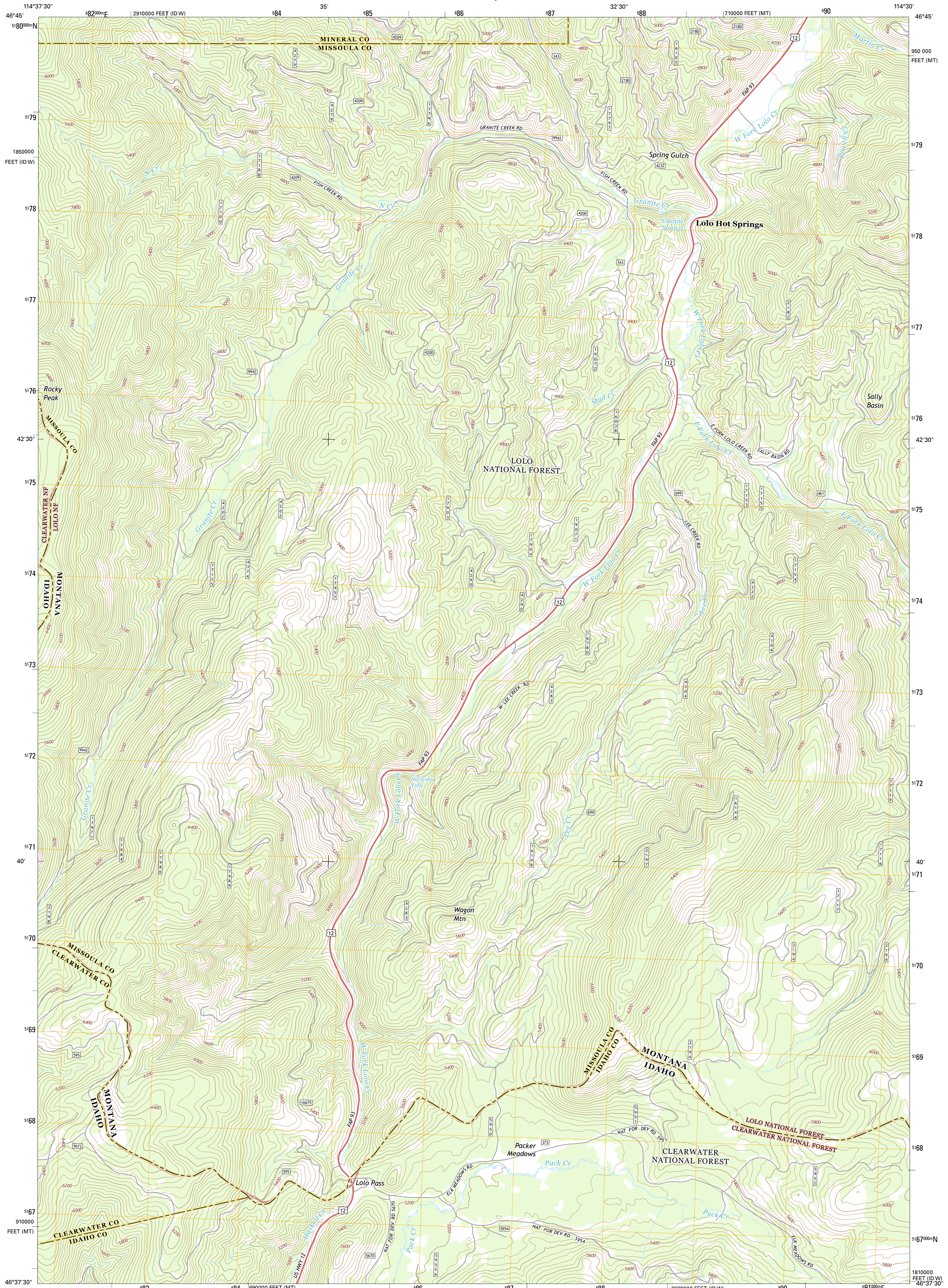




U.S. DEPARTMENT OF THE INTERIOR
U.S. GEOLOGICAL SURVEY



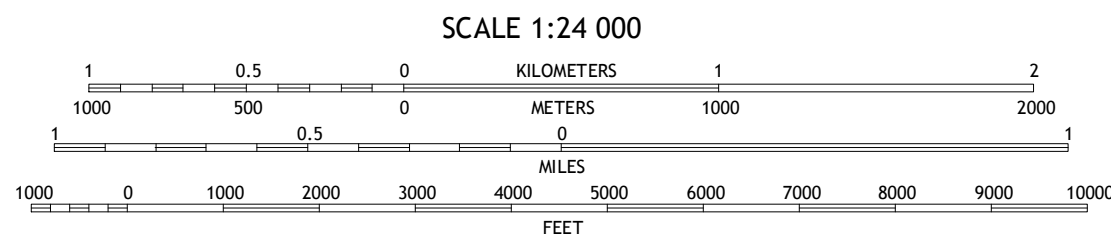
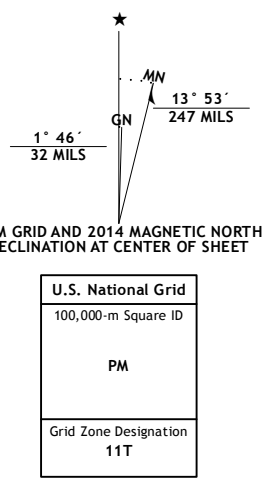
LOLO HOT SPRINGS QUADRANGLE
MONTANA-IDAHO
7.5-MINUTE SERIES



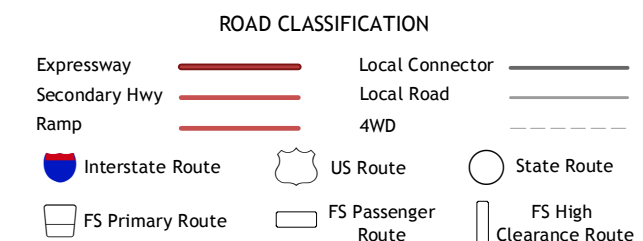
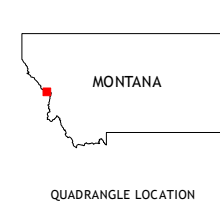
Produced by the United States Geological Survey
North American Datum of 1983 (NAD83)
World Geodetic System of 1984 (WGS84). Projection and
1 000-meter grid: Universal Transverse Mercator: Zone 11T
10 000-foot ticks: Montana Coordinate System of 1983, Idaho
Coordinate System of 1983 (west zone)

This map is not a legal document. Boundaries may be
generalized for this map scale. Private lands within government
reservations may not be shown. Obtain permission before
entering private lands.

Imagery.....NAIP, August 2011
Roads.....HERE, 6/2013
Roads within US Forest Service Lands.....FSTopo Data
with limited Forest Service updates, 2013
Names.....GNIS, 2013
Hydrography.....National Hydrography Dataset, 2011
Contours.....National Elevation Dataset, 2003
Boundaries.....Multiple sources; see metadata file 1972-2013
Public Land Survey System.....BLM, 2011



CONTOUR INTERVAL 40 FEET
NORTH AMERICAN VERTICAL DATUM OF 1988
This map was produced to conform with the
National Geospatial Program US Topo Product Standard, 2011.
A metadata file associated with this product is draft version 0.6.16



Check with local Forest Service unit
for current travel conditions and restrictions.

LOLO HOT SPRINGS, MT-ID
2014

1	2	3
4	5	6
7	8	9

ADJOINING QUADRANGLES

1 White Mountain
2 Lupine Creek
3 Garden Point
4 Granite Pass
5 West Fork Butte
6 Rocky Point
7 Roundtop
8 Ranger Peak

