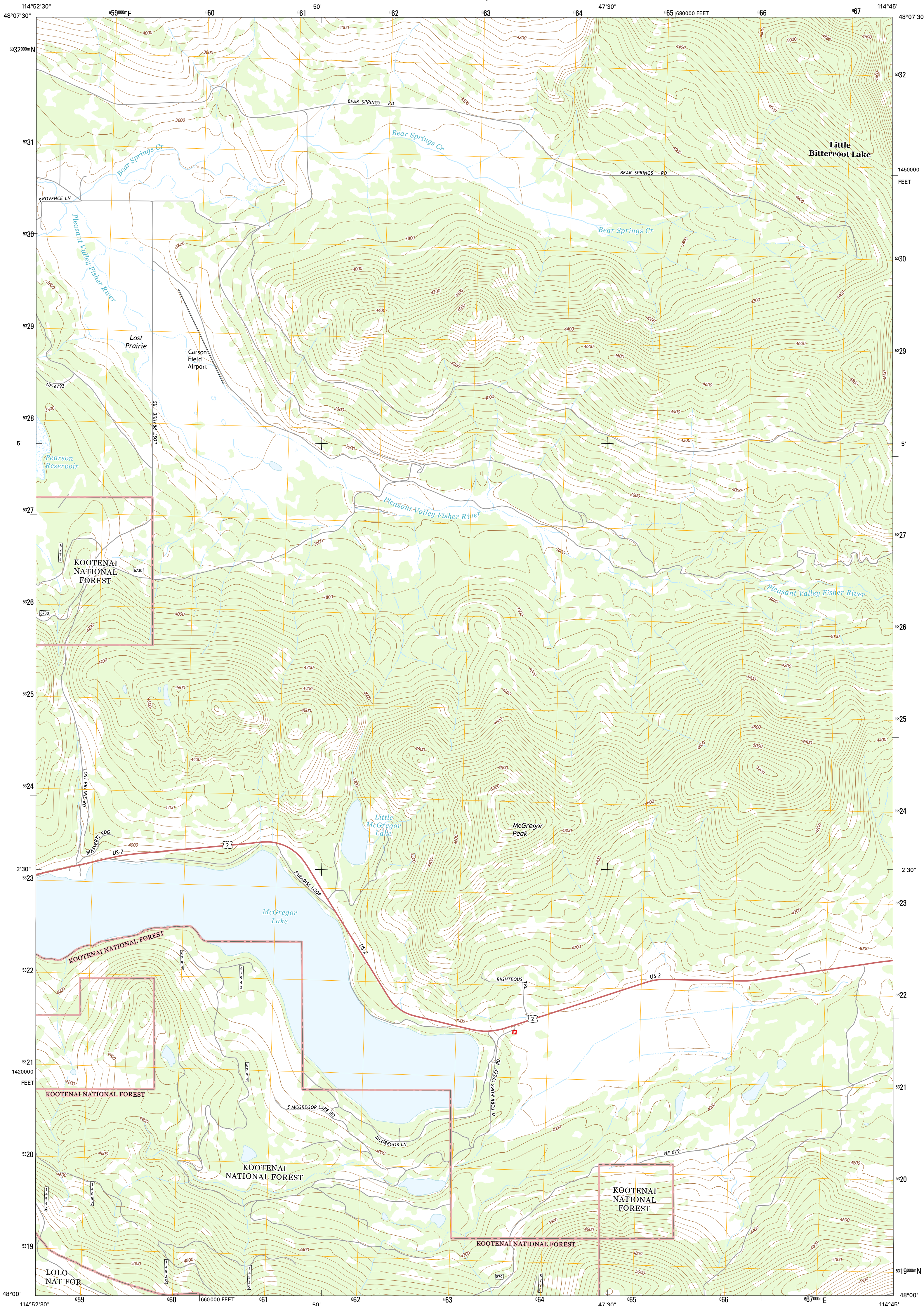




U.S. DEPARTMENT OF THE INTERIOR
U.S. GEOLOGICAL SURVEY



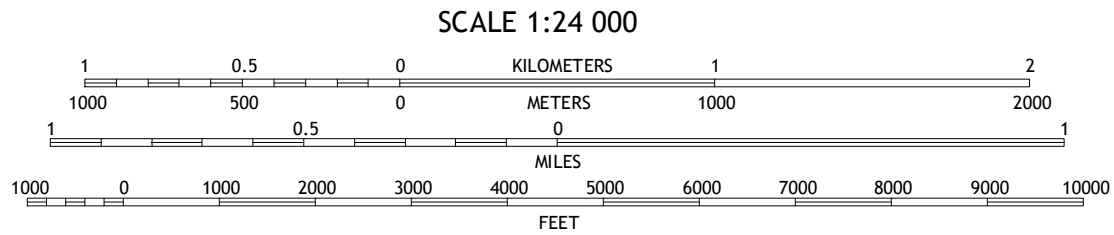
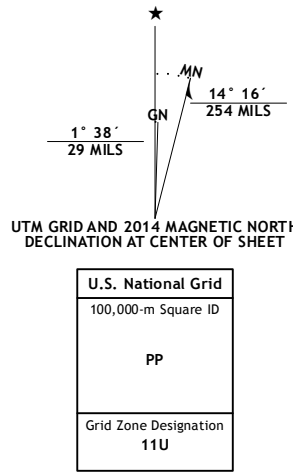
MCGREGOR PEAK QUADRANGLE
MONTANA-FLATHEAD CO.
7.5-MINUTE SERIES



Produced by the United States Geological Survey
North American Datum of 1983 (NAD83)
World Geodetic System of 1984 (WGS84). Projection and
1 000-meter grid: Universal Transverse Mercator, Zone 11U
10 000-foot ticks: Montana Coordinate System of 1983

This map is not a legal document. Boundaries may be
generalized for this map scale. Private lands within government
reservations may not be shown. Obtain permission before
entering private lands.

Imagery.....NAIP, August 2011
Roads.....HERC, ©2013
Roads within US Forest Service Lands.....FSTopo Data
with limited Forest Service updates, 2013
Names.....GNIS, 2013
Hydrography.....National Hydrography Dataset, 2011
Contours.....National Elevation Dataset, 2006
Boundaries.....Multiple sources; see metadata file 1972 - 2013
Public Land Survey System.....BLM, 2011



ROAD CLASSIFICATION			
Expressway	Local Connector	State Route	
Secondary Hwy	Local Road	FS High	
Ramp	4WD	Clearance Route	
Interstate Route	US Route		
FS Primary Route	FS Passenger Route		

Check with local Forest Service unit
for current travel conditions and restrictions.

CONTOUR INTERVAL 40 FEET
NORTH AMERICAN VERTICAL DATUM OF 1988

This map was produced to conform with the
National Geospatial Program US Topo Product Standard, 2011.
A metadata file associated with this product is draft version 0.6.16

1	2	3
4	5	
6	7	8

ADJOINING QUADRANGLES

- 1 Lynch Lake
- 2 Dahl Lake
- 3 Pleasant Valley Mountain
- 4 Meadow Peak
- 5 Marlon
- 6 Shroder Creek
- 7 Murr Peak
- 8 Hubbard Reservoir

MCGREGOR PEAK, MT
2014

