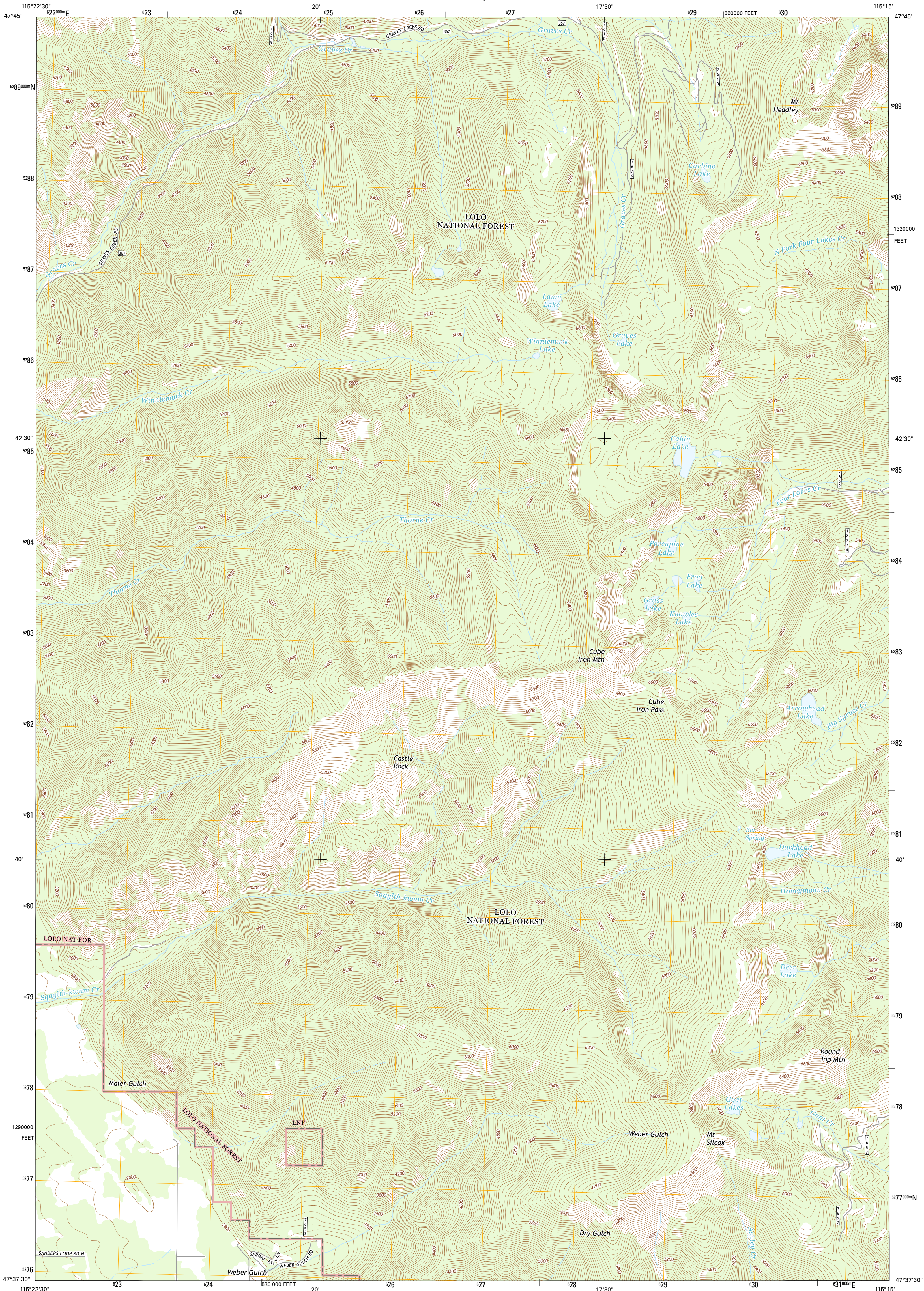




U.S. DEPARTMENT OF THE INTERIOR  
U.S. GEOLOGICAL SURVEY



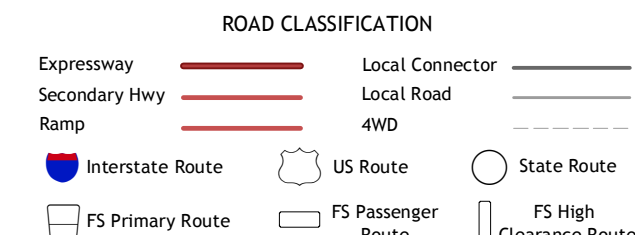
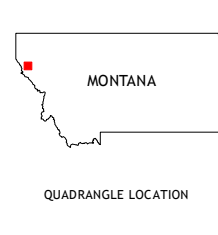
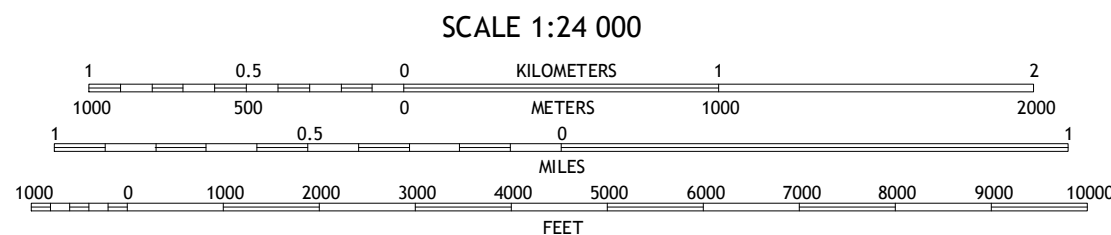
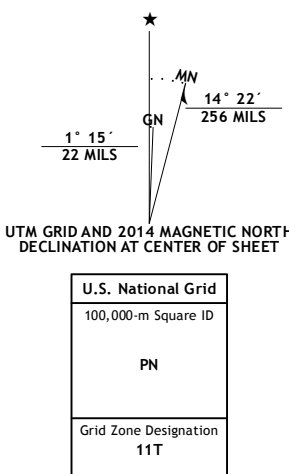
MOUNT HEADLEY QUADRANGLE  
MONTANA-SANDERS CO.  
7.5-MINUTE SERIES



Produced by the United States Geological Survey  
North American Datum of 1983 (NAD83)  
World Geodetic System of 1984 (WGS84). Projection and  
1 000-meter grid: Universal Transverse Mercator, Zone 11T  
10 000-foot ticks: Montana Coordinate System of 1983

This map is not a legal document. Boundaries may be  
generalized for this map scale. Private lands within government  
reservations may not be shown. Obtain permission before  
entering private lands.

Imagery.....NAIP, August 2011  
Roads.....HERE, 2013  
Roads within US Forest Service Lands.....FSTopo Data  
with limited Forest Service updates, 2013  
Names.....GNIS, 2013  
Hydrography.....National Hydrography Dataset, 2011  
Contours.....National Elevation Dataset, 2005  
Boundaries.....Multiple sources; see metadata file 1972-2013  
Public Land Survey System.....BLM, 2011



Check with local Forest Service unit  
for current travel conditions and restrictions.

MOUNT HEADLEY, MT  
2014

1	2	3
4	5	
6	7	8

ADJOINING QUADRANGLES

1 Seven Point Mountain  
2 Vermilion Peak  
3 Fishtrap Lake  
4 Belknap  
5 Priscilla Peak  
6 Table Top Mountain  
7 Thompson Falls  
8 Eddy Mountain

