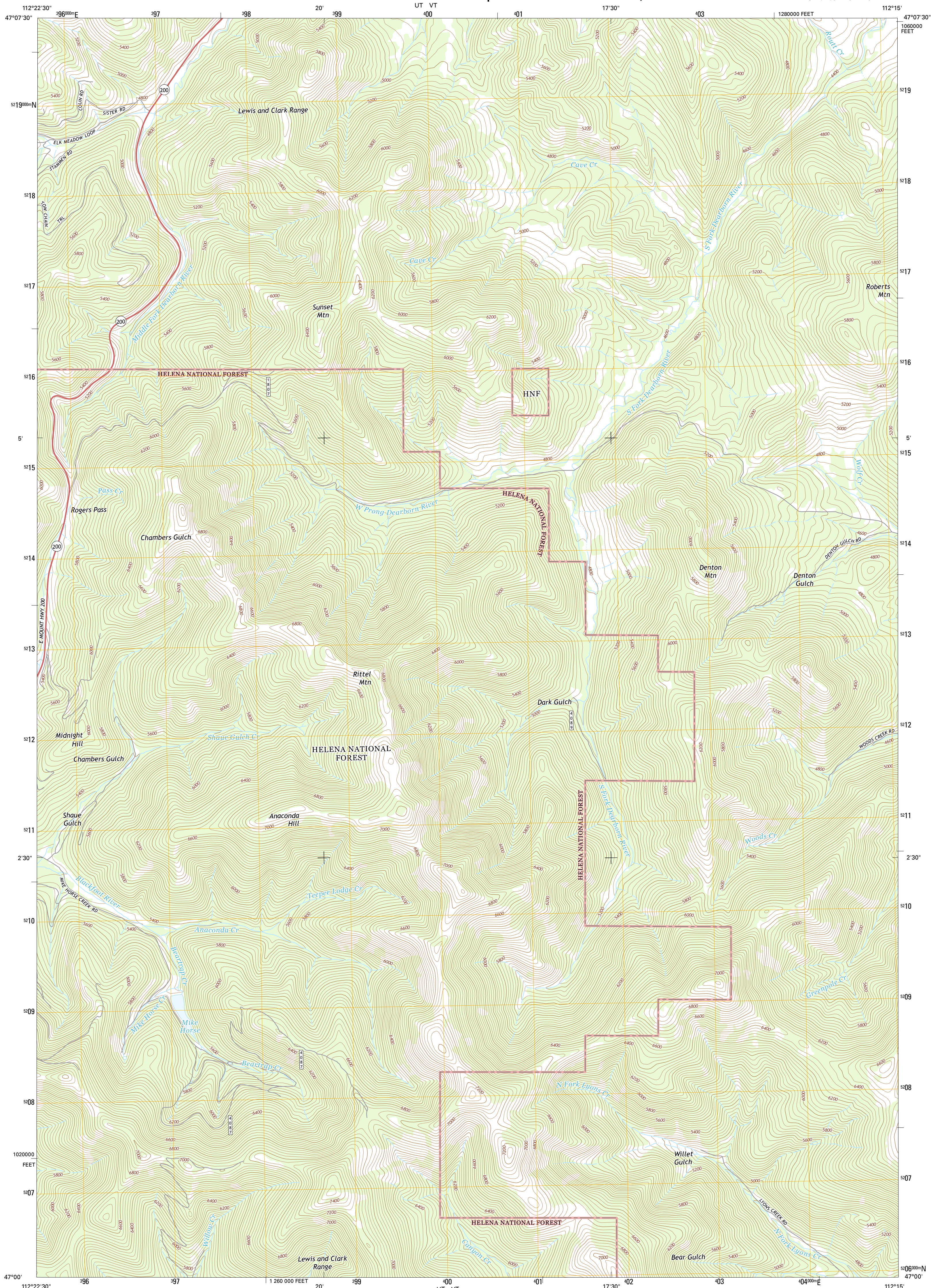




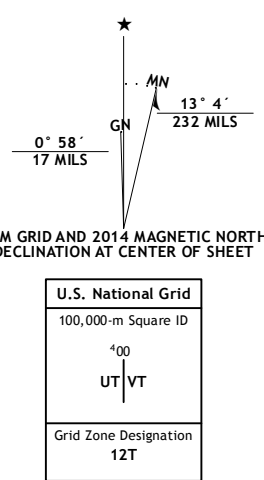
ROGERS PASS QUADRANGLE
MONTANA-LEWIS AND CLARK CO.
7.5-MINUTE SERIES



Produced by the United States Geological Survey
North American Datum of 1983 (NAD83)
World Geodetic System of 1984 (WGS84). Projection and
1 000-meter grid: Universal Transverse Mercator, Zone 12T
10 000-foot ticks: Montana Coordinate System of 1983

This map is not a legal document. Boundaries may be generalized for this map scale. Private lands within government reservations may not be shown. Obtain permission before entering private lands.

Imagery.....	NAIP,	August	2011
Roads.....	HERE,	©2013	
Roads within US Forest Service Lands.....	FSTopo	Data	
	with limited Forest Service updates,	2013	
Names.....	GNIS,	2013	
Hydrography.....	National Hydrography Dataset,	2011	
Contours.....	National Elevation Dataset,	2001	
Boundaries.....	Multiple sources; see metadata file	1972 - 2013	
Public Land Survey System.....	BLM,	2011	



SCALE 1:24 000

CONTOUR INTERVAL 40 FEET
NORTH AMERICAN VERTICAL DATUM OF 1988

This map was produced to conform with the
US Geospatial Program US Topo Product Standard, 2011.
A data file associated with this product is draft version 0.6.16

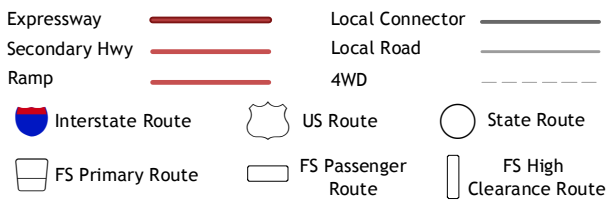


1	2	3	1 Blowout Mountain
4		5	2 Johnson Mountain
6	7	8	3 Comb Rock
			4 Cadotte Creek
			5 Roberts Mountain
			6 Stemple Pass
			7 Wilborn
			8 Mitchell Mountain

ADJOINING QUADRANGLES

ADJOINING QUADRANGLES

ROAD CLASSIFICATION



Check with local Forest Service unit
for current travel conditions and restrictions.

ROGERS PASS, MT
2014

