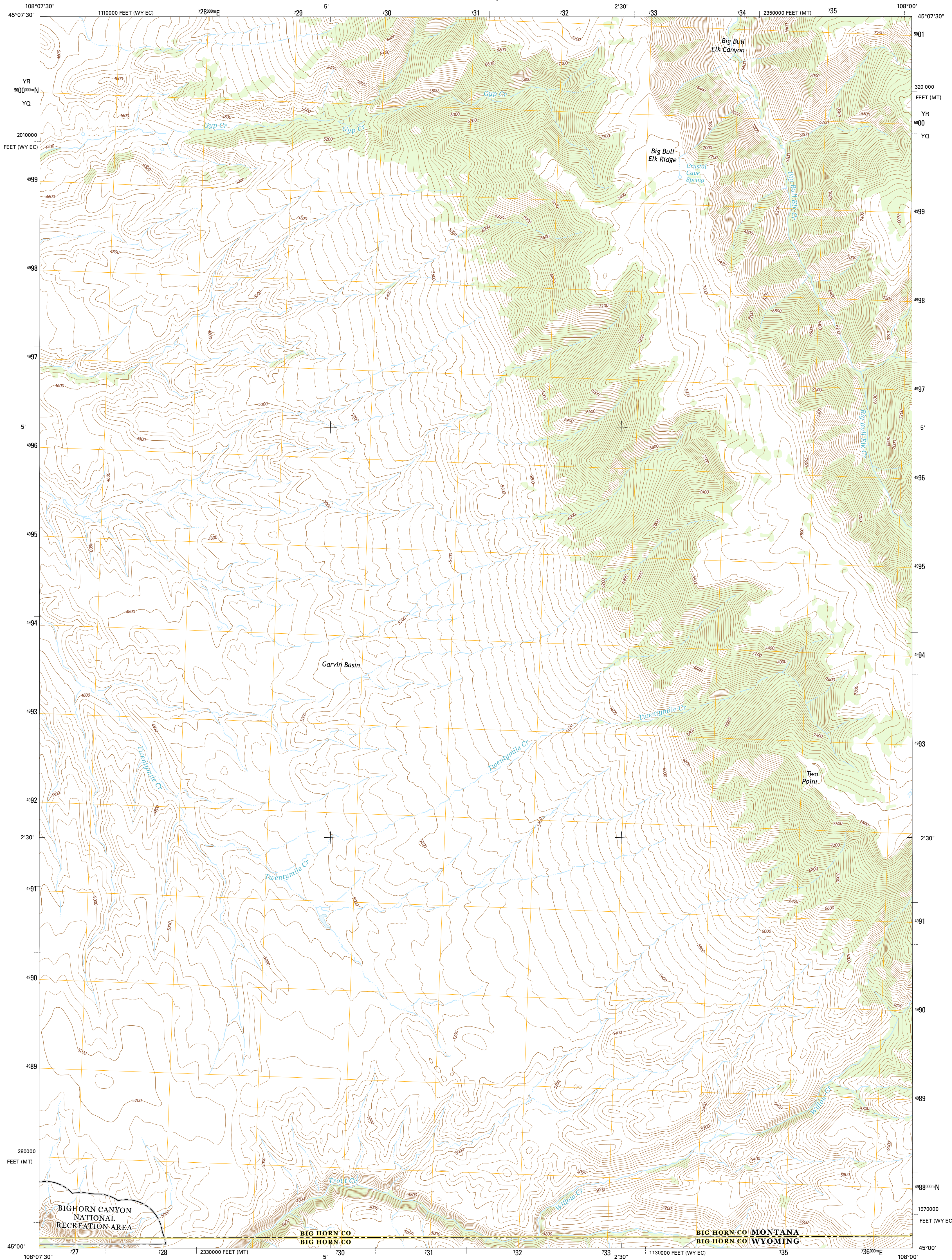




U.S. DEPARTMENT OF THE INTERIOR  
U.S. GEOLOGICAL SURVEY



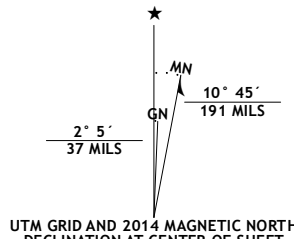
TWO POINT QUADRANGLE  
MONTANA-WYOMING  
7.5-MINUTE SERIES



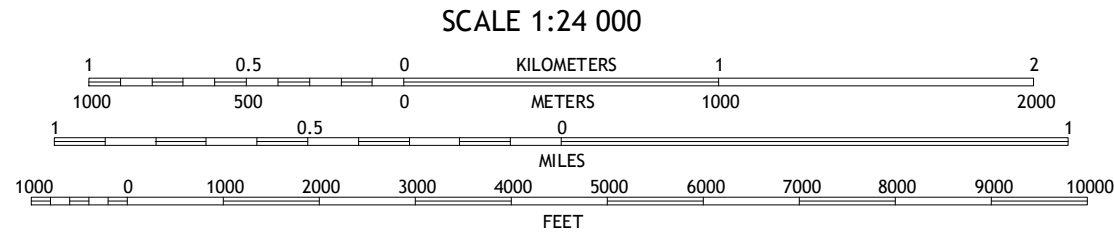
Produced by the United States Geological Survey  
North American Datum of 1983 (NAD83)  
World Geodetic System of 1984 (WGS84). Projection and  
1 000-meter grid: Universal Transverse Mercator, Zone 12T  
10 000-foot ticks: Montana Coordinate System of 1983, Wyoming  
Coordinate System of 1983 (east central zone)

This map is not a legal document. Boundaries may be  
generalized for this map scale. Private lands within government  
reservations may not be shown. Obtain permission before  
entering private lands.

Imagery.....NAIP, July 2011 - August 2011  
Roads.....HERE, ©2013  
Names.....GNIS, 2013  
Hydrography.....National Hydrography Dataset, 2011  
Contours.....National Elevation Dataset, 2000  
Boundaries.....Multiple sources; see metadata file 1972 - 2013  
Public Land Survey System.....BLM, 2011



U.S. National Grid	
100,000-m Square ID	
YR	YQ
4999	9000
Grid Zone Designation	
12T	



CONTOUR INTERVAL 40 FEET  
NORTH AMERICAN VERTICAL DATUM OF 1988

This map was produced to conform with the  
National Geospatial Program US Topo Product Standard, 2011.  
A metadata file associated with this product is draft version 0.6.16



QUADRANGLE LOCATION

ROAD CLASSIFICATION			
Expressway	Local Connector		
Secondary Hwy	Local Road		
Ramp	4WD		
Interstate Route	US Route	State Route	

1	2	3
4	5	6
7	8	9

ADJOINING QUADRANGLES

1 Dead Indian Hill  
2 Little Finger Ridge  
3 Peyote Point  
4 Hillsboro  
5 Bear Hole  
6 Natural Trap Cave  
7 Simmons Canyon  
8 Mexican Hill

TWO POINT, MT-WY  
2014

