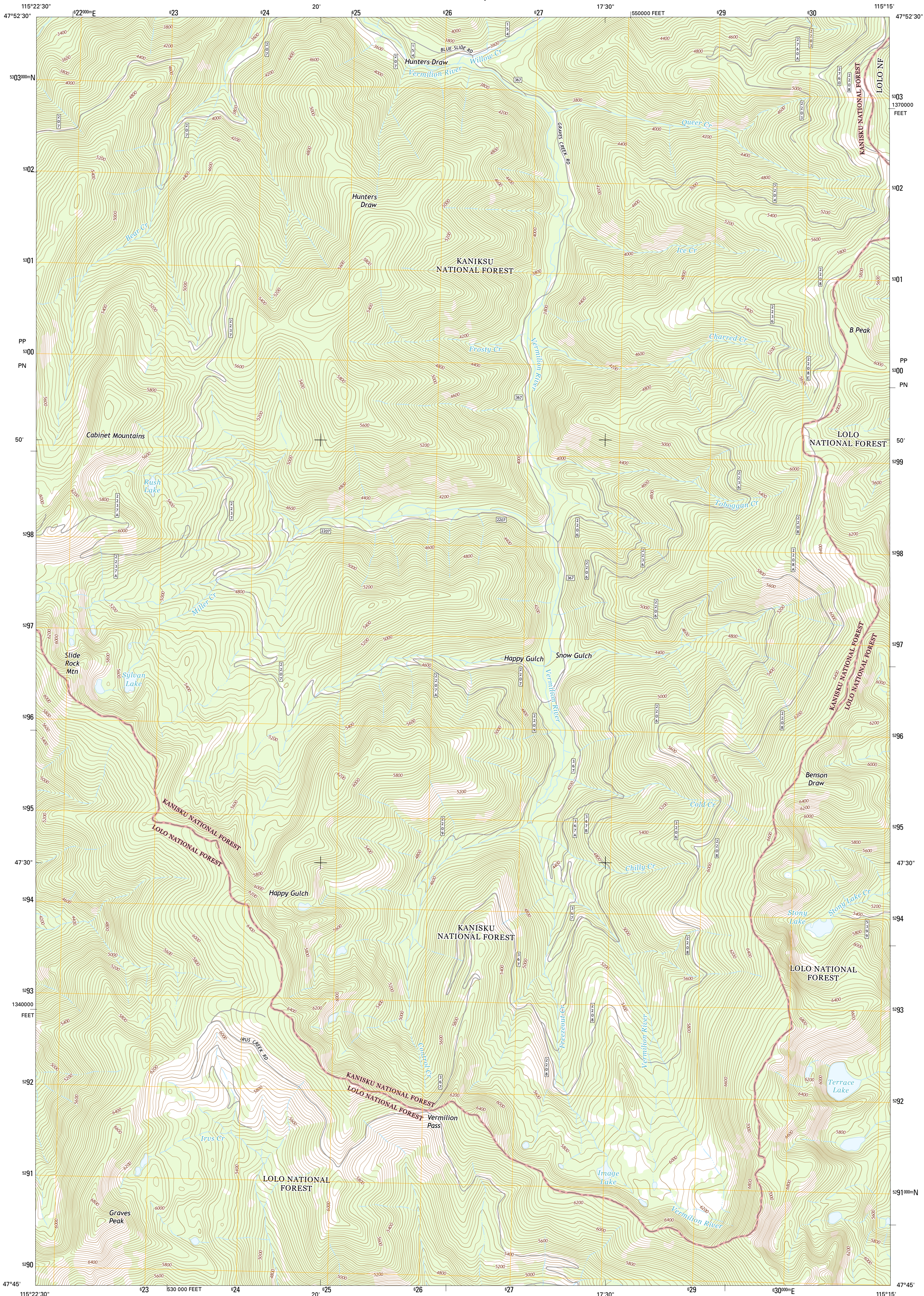




U.S. DEPARTMENT OF THE INTERIOR
U.S. GEOLOGICAL SURVEY



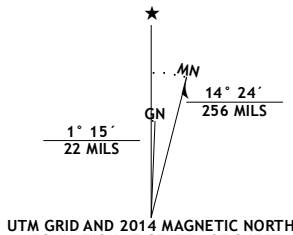
VERMILION PEAK QUADRANGLE
MONTANA-SANDERS CO.
7.5-MINUTE SERIES



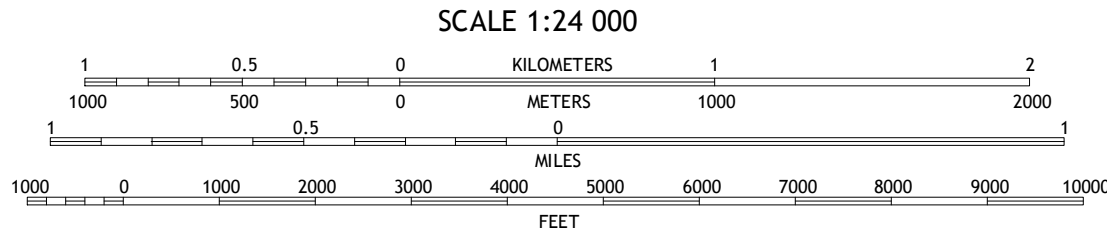
Produced by the United States Geological Survey
North American Datum of 1983 (NAD83)
World Geodetic System of 1984 (WGS84). Projection and
1 000-meter grid: Universal Transverse Mercator, Zone 11T
10 000-foot ticks: Montana Coordinate System of 1983

This map is not a legal document. Boundaries may be
generalized for this map scale. Private lands within government
reservations may not be shown. Obtain permission before
entering private lands.

Imagery.....NAIP, August 2011
Roads.....HERE, ©2013
Roads within US Forest Service Lands.....FSTopo Data
with limited Forest Service updates, 2013
Name.....GNIS, 2013
Hydrography.....National Hydrography Dataset, 2011
Contours.....National Elevation Dataset, 2006
Boundaries.....Multiple sources; see metadata file 1972-2013
Public Land Survey System.....BLM, 2011



U.S. National Grid	
100,000-m Square ID	
PP	100
PN	
Grid Zone Designation	
11T	

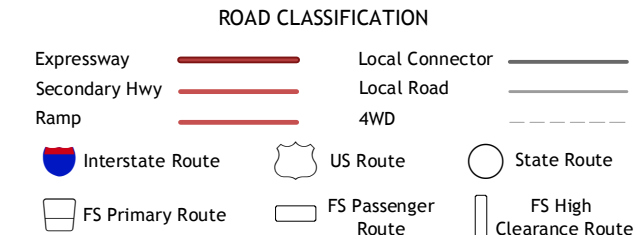


CONTOUR INTERVAL 40 FEET
NORTH AMERICAN VERTICAL DATUM OF 1988
This map was produced to conform with the
National Geospatial Program US Topo Product Standard, 2011.
A metadata file associated with this product is draft version 0.6.16

1	2	3
4	5	
6	7	8

ADJOINING QUADRANGLES

1 Silver Butte Pass
2 Miller Lake
3 Mantrap Fork
4 Seven Point Mountain
5 Fishtrap Lake
6 Belknap
7 Mount Headley
8 Priscilla Peak



Check with local Forest Service unit
for current travel conditions and restrictions.

VERMILION PEAK, MT
2014

