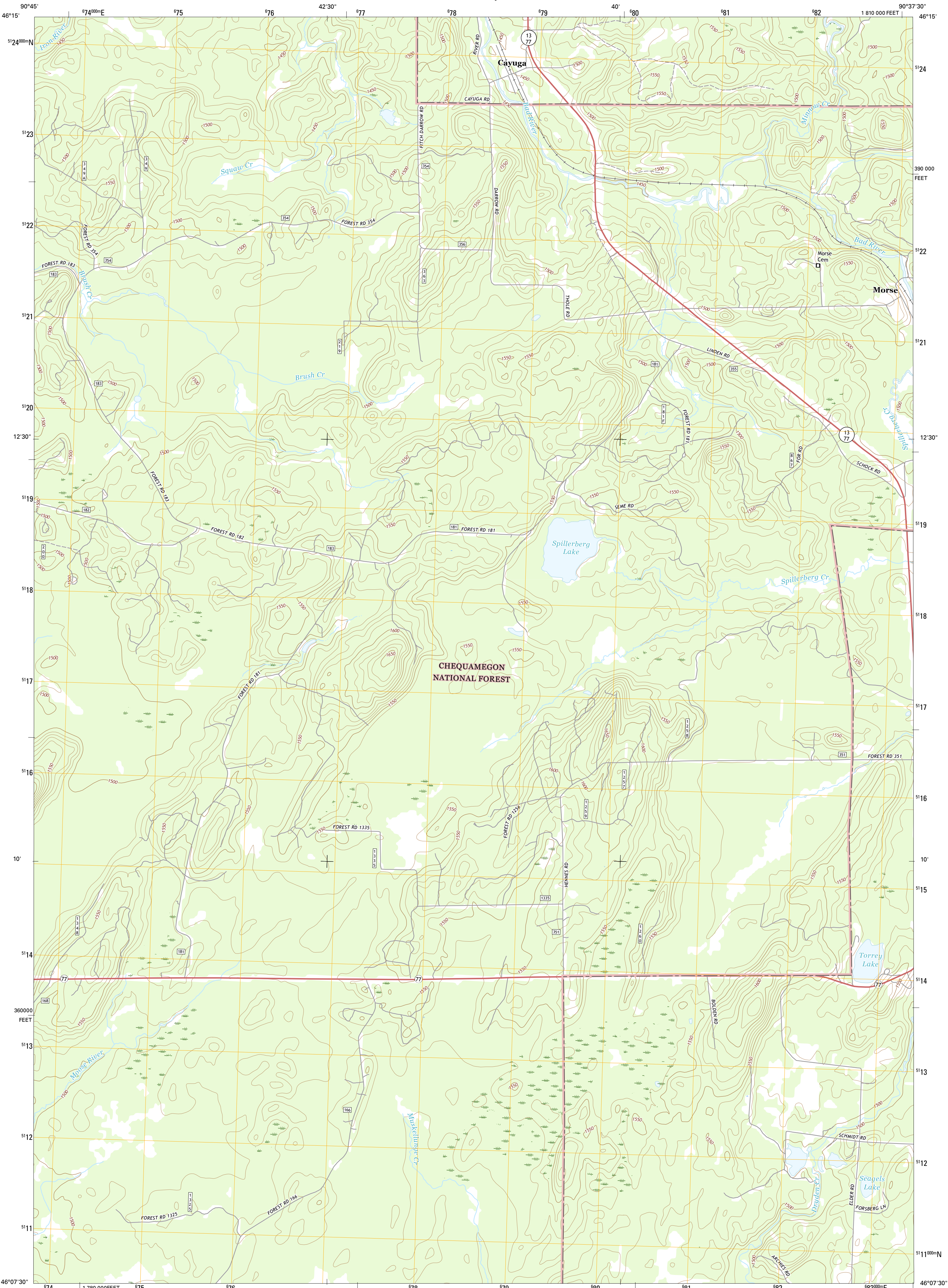




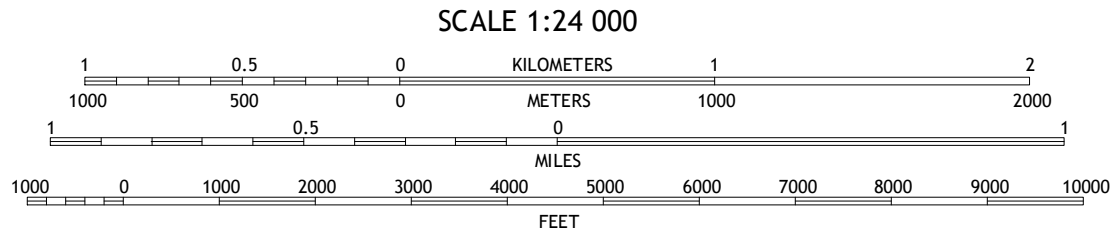
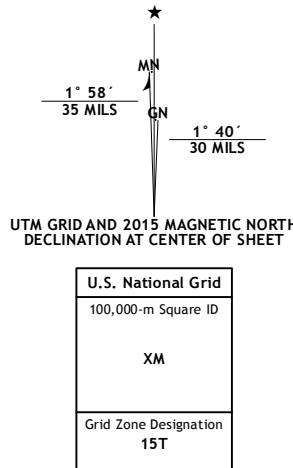
U.S. DEPARTMENT OF THE INTERIOR
U.S. GEOLOGICAL SURVEY



MORSE QUADRANGLE
WISCONSIN-ASHLAND CO.
7.5-MINUTE SERIES



Produced by the United States Geological Survey
North American Datum of 1983 (NAD83)
World Geodetic System of 1984 (WGS84). Projection and
1 000-meter grid: Universal Transverse Mercator, Zone 15T
10 000-foot ticks: Wisconsin Coordinate System of 1983 (north
zone)
This map is not a legal document. Boundaries may be
generalized for this map scale. Private lands within government
reservations may not be shown. Obtain permission before
entering private lands.
Imagery.....NAIP, July 2013
Roads.....U.S. Census Bureau, 2014 - 2015
Roads within US Forest Service Lands.....FS Topo Data
with limited Forest Service updates, 2012 - 2015
Names.....GNS, 2015
Hydrography.....National Hydrography Dataset, 2013
Contours.....National Elevation Dataset, 2002
Boundaries.....Multiple sources; see metadata file 1972 - 2015
Public Land Survey System.....BLM, 2014
Wetlands.....FWS National Wetlands Inventory 1977 - 2014



CONTOUR INTERVAL 10 FEET
NORTH AMERICAN VERTICAL DATUM OF 1988
This map was produced to conform with the
National Geospatial Program US Topo Product Standard, 2011.
A metadata file associated with this product is draft version 0.6.19



1	2	3
4	5	6
7	8	9

ADJOINING QUADRANGLES

1 Mineral Lake
2 Mellen
3 Mount Whittlesey
4 Clam Lake NE
5 Glidden
6 Clam Lake SE
7 Shanagolden
8 Pecksville

ROAD CLASSIFICATION		
Expressway	Local Connector	Local Road
Secondary Hwy	4WD	
Ramp		
Interstate Route	US Route	State Route
FS Primary Route	FS Passenger Route	FS High Clearance Route

Check with local Forest Service unit
for current travel conditions and restrictions.

MORSE, WI
2015

