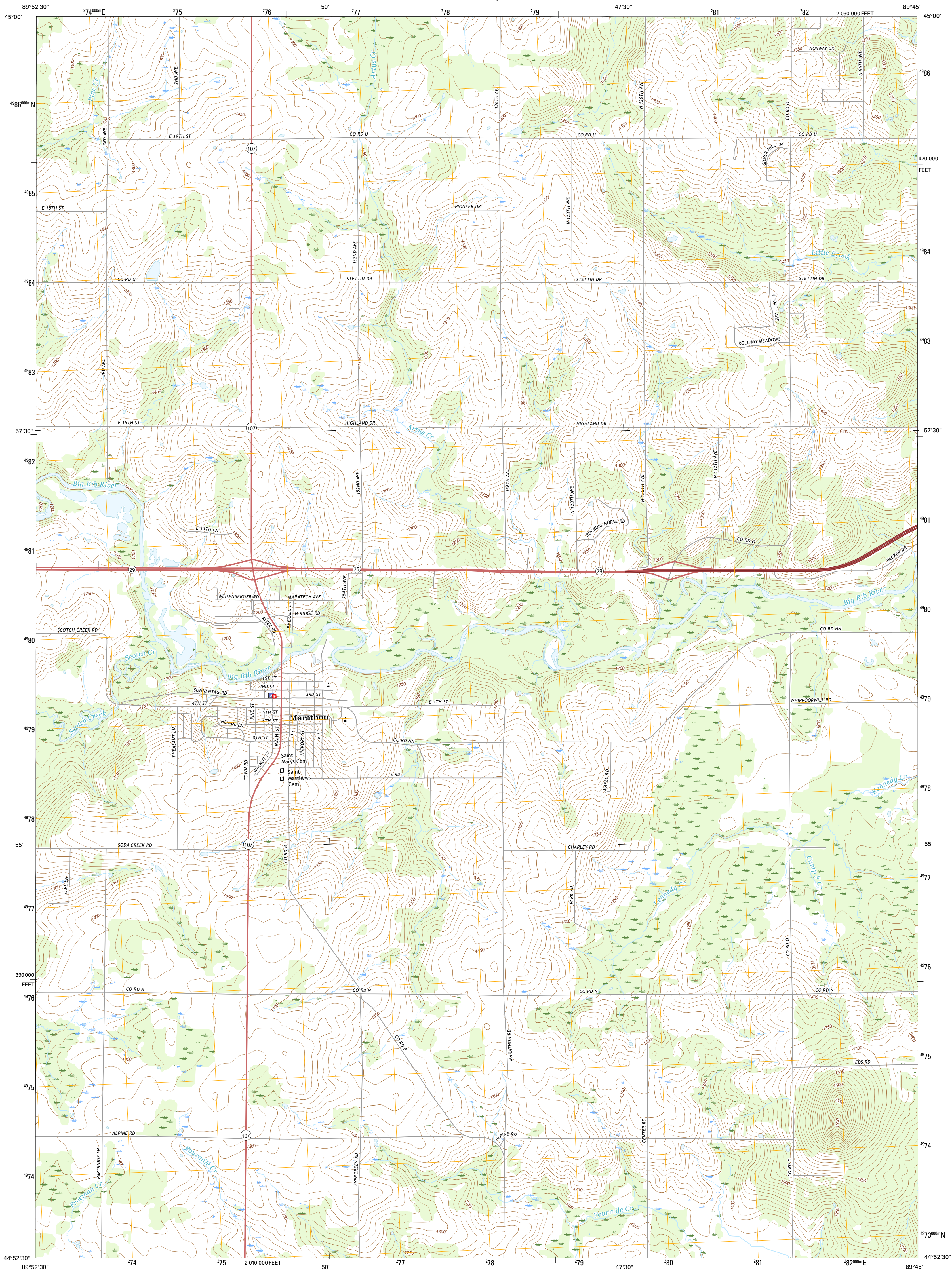




U.S. DEPARTMENT OF THE INTERIOR  
U.S. GEOLOGICAL SURVEY

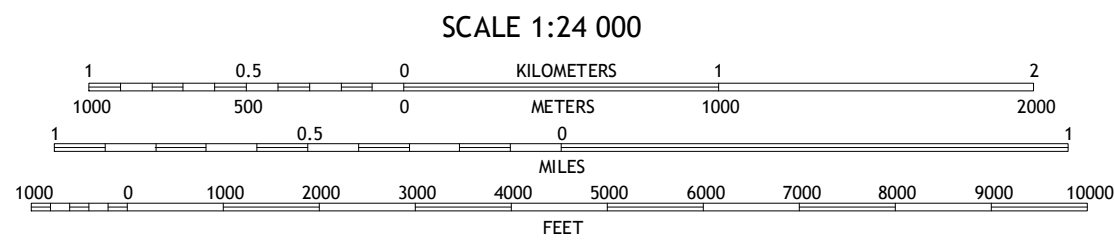


MARATHON QUADRANGLE  
WISCONSIN-MARATHON CO.  
7.5-MINUTE SERIES



Produced by the United States Geological Survey  
North American Datum of 1983 (NAD83)  
World Geodetic System of 1984 (WGS84). Projection and  
1 000-meter grid: Universal Transverse Mercator, Zone 16T  
10 000-foot ticks: Wisconsin Coordinate System of 1983 (central  
zone)  
This map is not a legal document. Boundaries may be  
generalized for this map scale. Private lands within government  
reservations may not be shown. Obtain permission before  
entering private lands.  
Imagery.....NAIP, August 2013  
Roads.....U.S. Census Bureau, 2014 - 2015  
Names.....GNIS, 2015  
Hydrography.....National Hydrography Dataset, 2013  
Contours.....National Elevation Dataset, 1999  
Boundaries.....Multiple sources; see metadata file 1972 - 2015  
Public Land Survey System.....BLM, 2014  
Wetlands.....FWS National Wetlands Inventory 1977 - 2014

UTM GRID AND 2015 MAGNETIC NORTH  
DECLINATION AT CENTER OF SHEET  
U.S. National Grid  
100,000-m Square ID  
BQ  
Grid Zone Designation  
16T



CONTOUR INTERVAL 10 FEET  
NORTH AMERICAN VERTICAL DATUM OF 1988  
This map was produced to conform with the  
National Geospatial Program US Topo Product Standard, 2011.  
A metadata file associated with this product is draft version 0.6.19



ROAD CLASSIFICATION  
Expressway  
Secondary Hwy  
Ramp  
Interstate Route  
Local Connector  
Local Road  
4WD  
US Route  
State Route

1	2	3
4	5	6
7	8	9

1 Hamburg  
2 Little Chicago  
3 Brokaw  
4 Edgar  
5 Wausau West  
6 Marathon SW  
7 Halder  
8 Neshnee

MARATHON, WI  
2015

