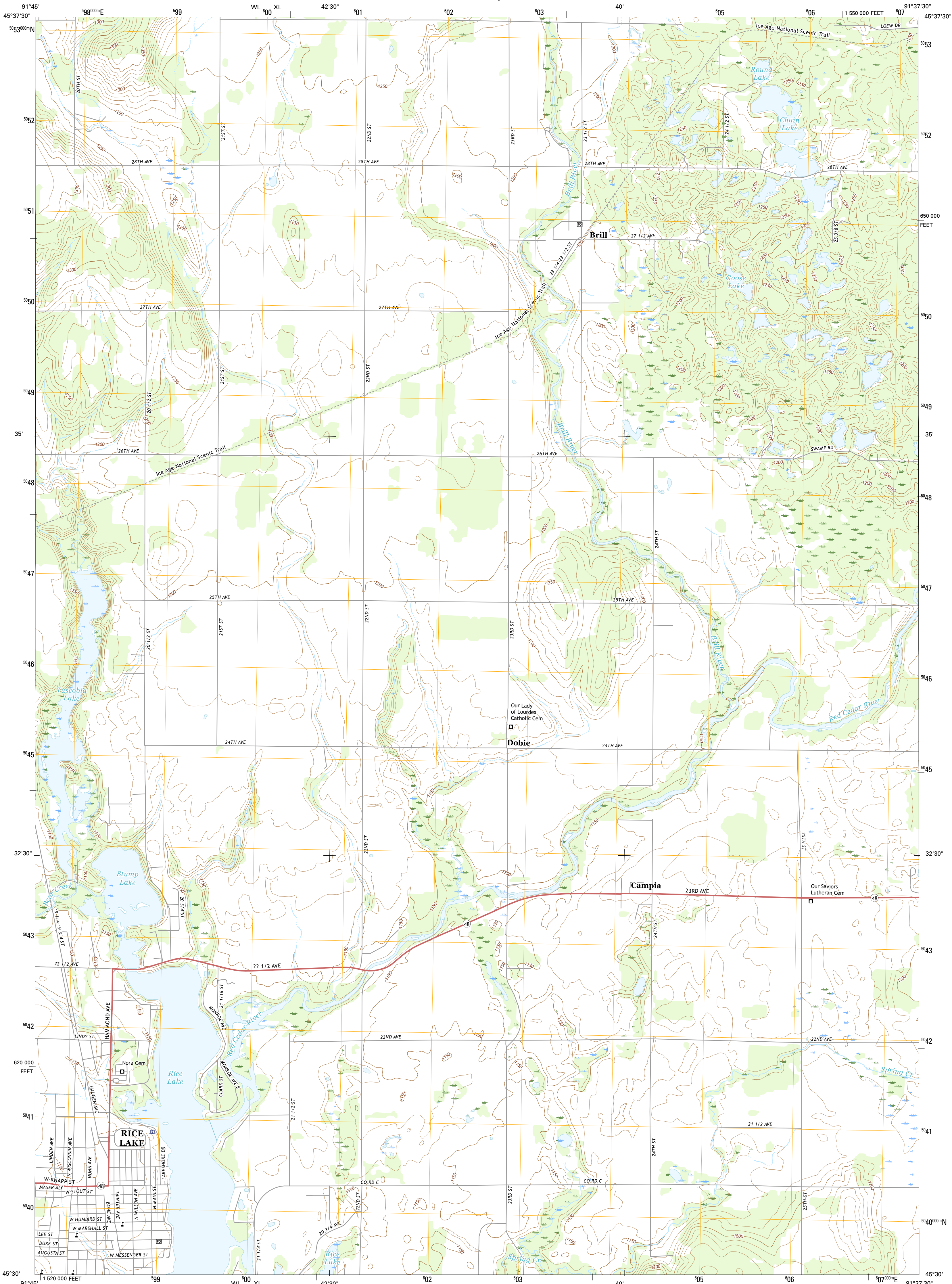




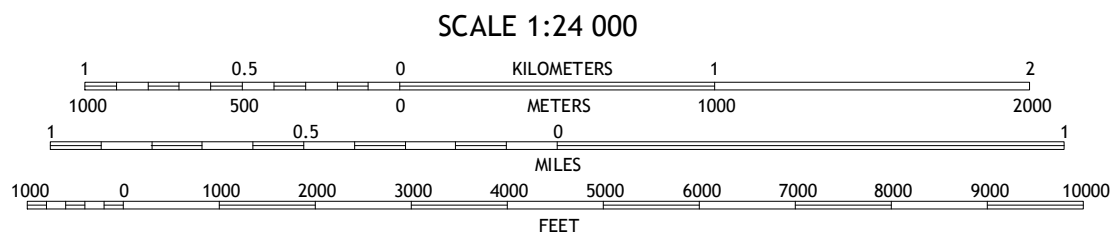
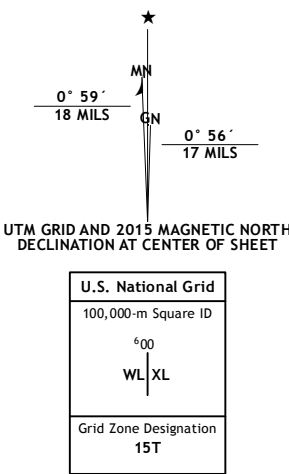
U.S. DEPARTMENT OF THE INTERIOR
U.S. GEOLOGICAL SURVEY



RICE LAKE NORTH QUADRANGLE
WISCONSIN-BARRON CO.
7.5-MINUTE SERIES



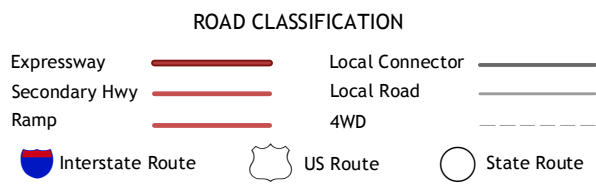
Produced by the United States Geological Survey
North American Datum of 1983 (NAD83)
World Geodetic System of 1984 (WGS84). Projection and
1 000-meter grid: Universal Transverse Mercator, Zone 15T
10 000-foot ticks: Wisconsin Coordinate System of 1983 (central
zone)
This map is not a legal document. Boundaries may be
generalized for this map scale. Private lands within government
reservations may not be shown. Obtain permission before
entering private lands.
Imagery.....NAIP, July 2013
Roads.....U.S. Census Bureau, 2014 - 2015
Names.....National Hydrography Dataset, 2015
Hydrography.....National Elevation Dataset, 2008
Contours.....Multiple sources; see metadata file 1972 - 2015
Boundaries.....BLM, 2014
Public Land Survey System.....BLM, 2014
Wetlands.....FWS National Wetlands Inventory 1977 - 2014



CONTOUR INTERVAL 10 FEET
NORTH AMERICAN VERTICAL DATUM OF 1988
This map was produced to conform with the
National Geospatial Program US Topo Product Standard, 2011.
A metadata file associated with this product is draft version 0.6.19



1	2	3	1 Sarona
4	5	2 Nobleton	
6	7	3 Birchwood	
8	9	4 Haugen	
		5 Mikana	
		6 Barron	
		7 Rice Lake South	
		8 Strickland	



RICE LAKE NORTH, WI
2015

