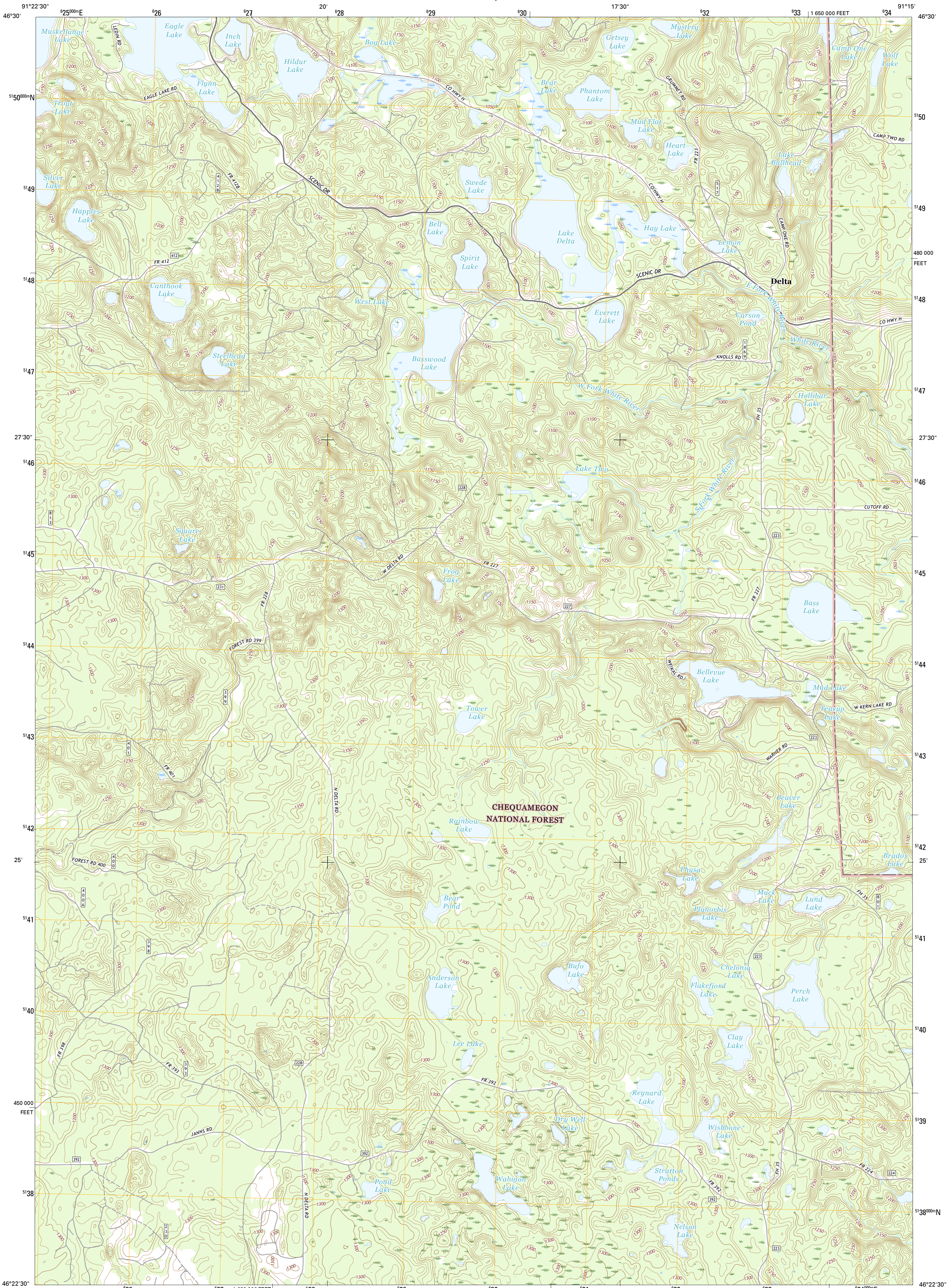




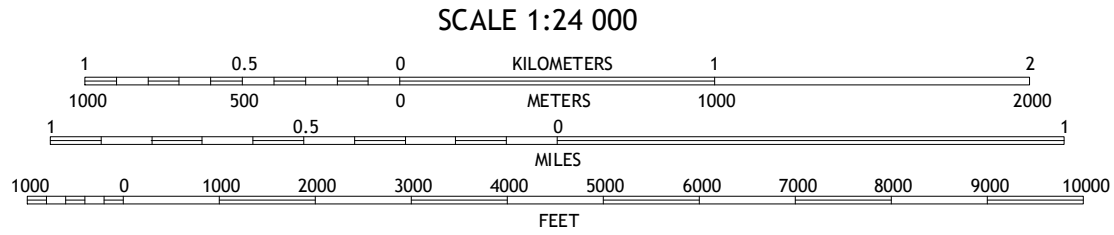
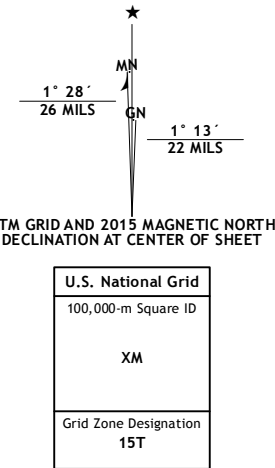
U.S. DEPARTMENT OF THE INTERIOR  
U.S. GEOLOGICAL SURVEY



DELTA QUADRANGLE  
WISCONSIN-BAYFIELD CO.  
7.5-MINUTE SERIES



**Produced by the United States Geological Survey**  
North American Datum of 1983 (NAD83)  
World Geodetic System of 1984 (WGS84). Projection and  
1 000-meter grid: Universal Transverse Mercator, Zone 15T  
10 000-foot ticks: Wisconsin Coordinate System of 1983 (north  
zone)  
This map is not a legal document. Boundaries may be  
generalized for this map scale. Private lands within government  
reservations may not be shown. Obtain permission before  
entering private lands.  
Imagery.....NAIP, July 2013  
Roads.....U.S. Census Bureau, 2014 - 2015  
Roads within US Forest Service Lands.....FS Topo Data  
with limited Forest Service updates, 2012 - 2015  
Names.....National Hydrography Dataset, 2013  
Contours.....National Elevation Dataset, 2009  
Boundaries.....Multiple sources; see metadata file 1972 - 2015  
Public Land Survey System.....BLM, 2014  
Wetlands.....FWS National Wetlands Inventory 1977 - 2014



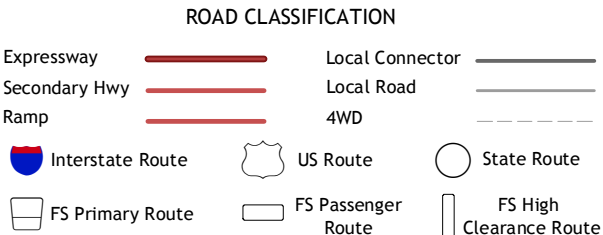
CONTOUR INTERVAL 10 FEET  
NORTH AMERICAN VERTICAL DATUM OF 1988  
This map was produced to conform with the  
National Geospatial Program US Topo Product Standard, 2011.  
A metadata file associated with this product is draft version 0.6.19



QUADRANGLE LOCATION

1	2	3
4	5	6
7	8	

1 Iron Lake  
2 Hart Lake  
3 Ino  
4 Drummond NW  
5 Grandview NW  
6 Upper Eau Claire Lake  
7 Drummond  
8 Diamond Lake



Check with local Forest Service unit  
for current travel conditions and restrictions.

DELTA, WI  
2015

