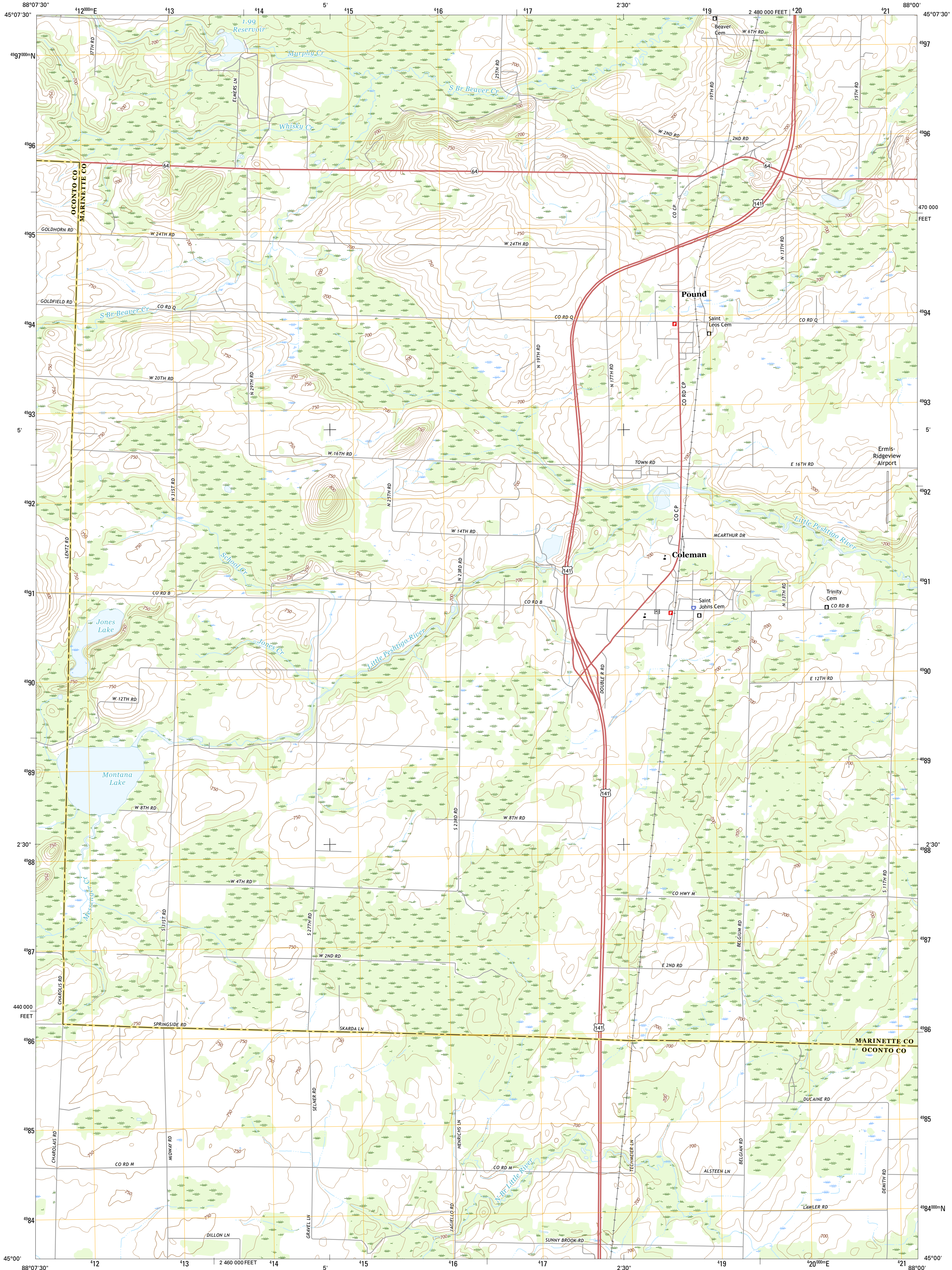




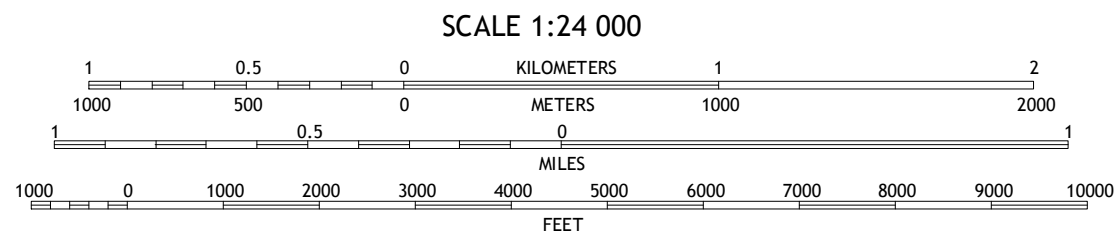
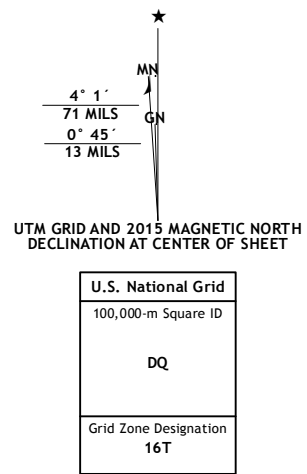
U.S. DEPARTMENT OF THE INTERIOR
U.S. GEOLOGICAL SURVEY



COLEMAN QUADRANGLE
WISCONSIN
7.5-MINUTE SERIES



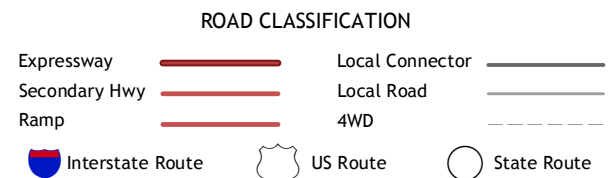
Produced by the United States Geological Survey
North American Datum of 1983 (NAD83)
World Geodetic System of 1984 (WGS84). Projection and
1000-meter grid: Universal Transverse Mercator, Zone 16T
10 000-foot ticks: Wisconsin Coordinate System of 1983 (central
zone)
This map is not a legal document. Boundaries may be
generalized for this map scale. Private lands within government
reservations may not be shown. Obtain permission before
entering private lands.
Imagery.....NAIP, July 2013
Roads.....U.S. Census Bureau, 2014 - 2015
Names.....GNIS, 2015
Hydrography.....National Hydrography Dataset, 2013
Contours.....National Elevation Dataset, 1999
Boundaries.....Multiple sources; see metadata file 1972 - 2015
Public Land Survey System.....BLM, 2014
Wetlands.....FWS National Wetlands Inventory 1977 - 2014



CONTOUR INTERVAL 10 FEET
NORTH AMERICAN VERTICAL DATUM OF 1988
This map was produced to conform with the
National Geospatial Program US Topo Product Standard, 2011.
A metadata file associated with this product is draft version 0.6.19



QUADRANGLE LOCATION



1	2	3
4	5	6
7	8	9

ADJOINING QUADRANGLES

1 White Potato Lake
2 Crivitz
3 Loomis
4 Kelly Lake
5 Porterfield SW
6 Oconto Falls North
7 Lena
8 Oconto West

COLEMAN, WI
2015

