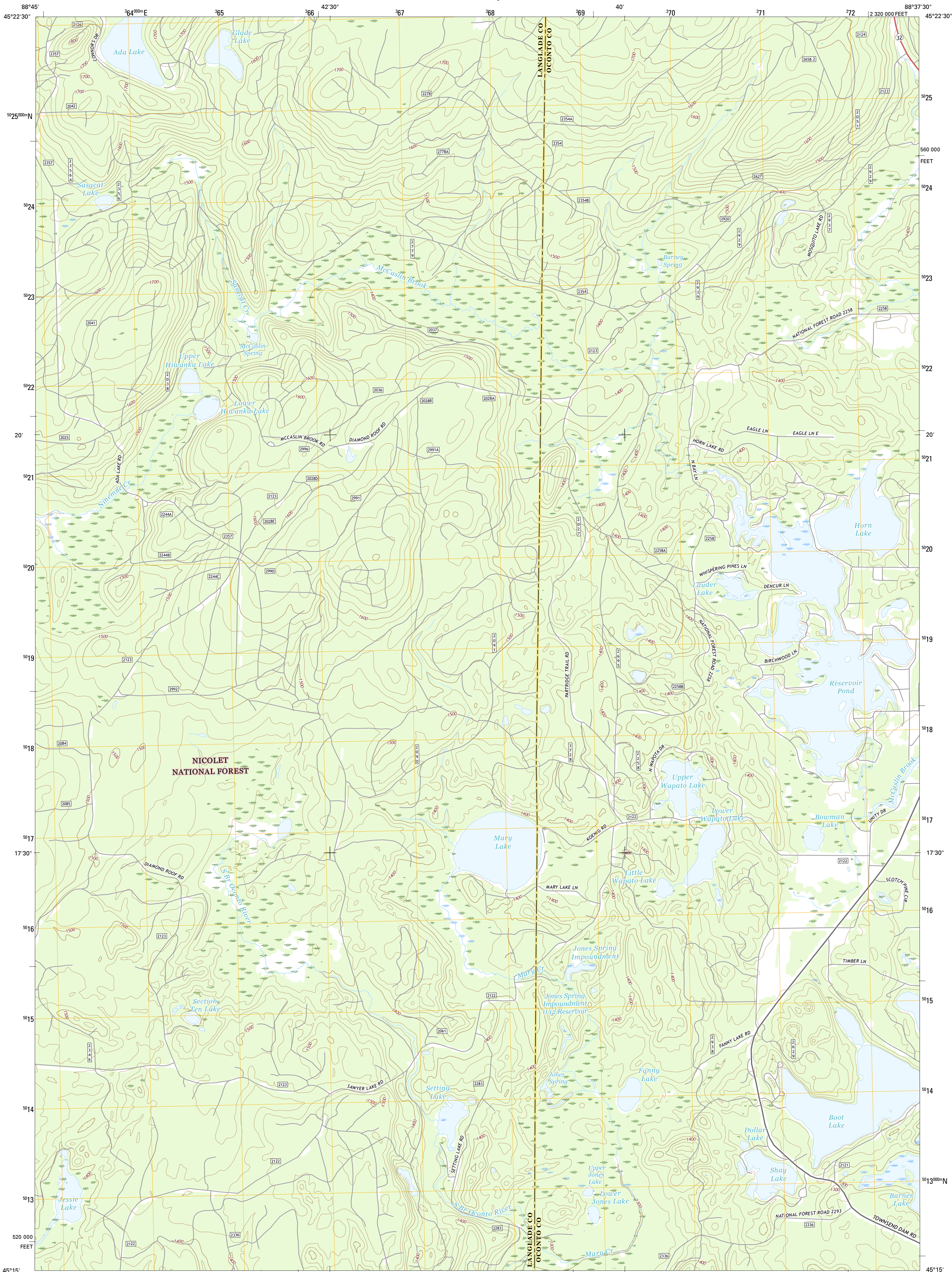




U.S. DEPARTMENT OF THE INTERIOR
U.S. GEOLOGICAL SURVEY



RESERVOIR POND QUADRANGLE
WISCONSIN
7.5-MINUTE SERIES

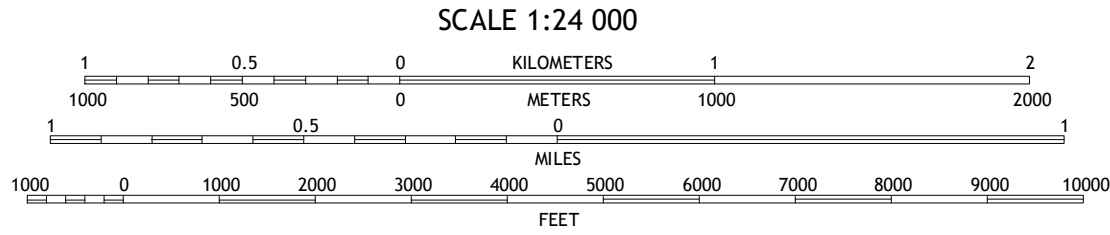
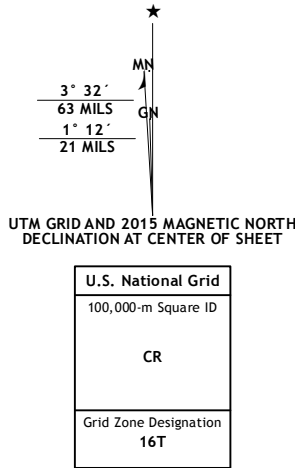


Produced by the United States Geological Survey

North American Datum of 1983 (NAD83)
World Geodetic System of 1984 (WGS84). Projection and
1 000-meter grid: Universal Transverse Mercator, Zone 16T
10 000-foot ticks: Wisconsin Coordinate System of 1983 (central
zone)

This map is not a legal document. Boundaries may be
generalized for this map scale. Private lands within government
reservations may not be shown. Obtain permission before
entering private lands.

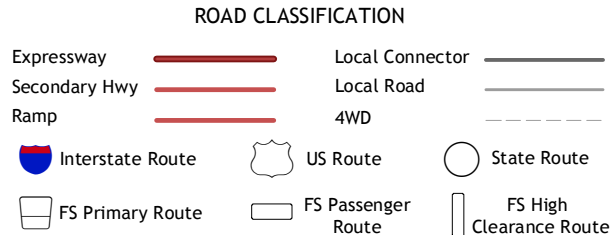
Imagery.....NAIP, July 2013
Roads.....U.S. Census Bureau, 2014 - 2015
Roads within US Forest Service Lands.....FS Topo Data
with limited Forest Service updates, 2012 - 2015
Names.....GNIS, 2015
Hydrography.....National Hydrography Dataset, 2013
Contours.....National Elevation Dataset, 2002
Boundaries.....Multiple sources; see metadata file 1972 - 2015
Public Land Survey System.....BLM, 2014
Wetlands.....FWS National Wetlands Inventory 1977 - 2014



This map was produced to conform with the
National Geospatial Program US Topo Product Standard, 2011.
A metadata file associated with this product is draft version 0.6.19



QUADRANGLE LOCATION



Check with local Forest Service unit
for current travel conditions and restrictions.

RESERVOIR POND, WI
2015

1	2	3
4	5	6
7	8	9

ADJOINING QUADRANGLES

1 Roberts Lake
2 Wabeno
3 Otter Lake
4 Lily
5 Townsend
6 White Lake
7 Langlade
8 Shadow Lake

