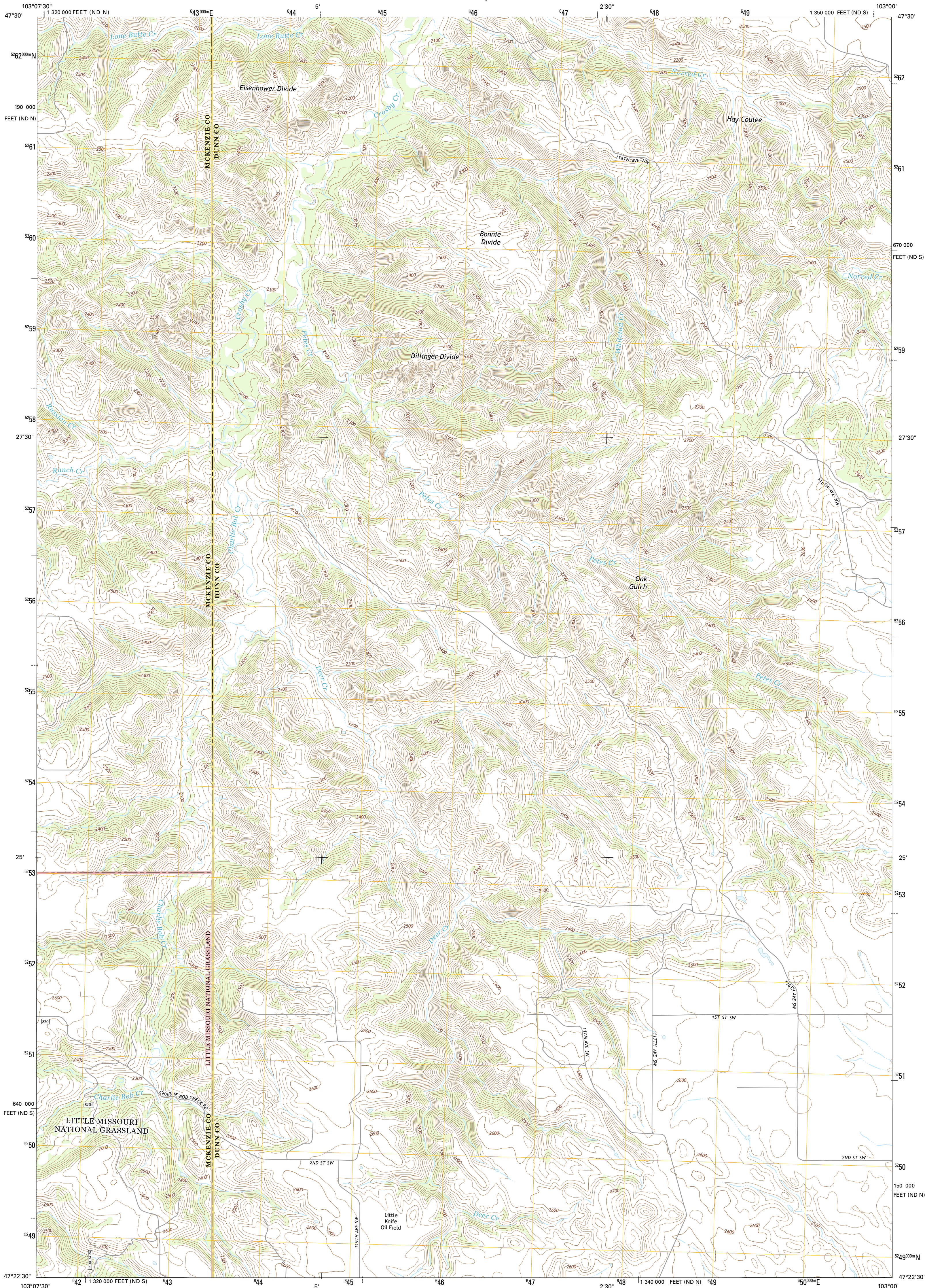




U.S. DEPARTMENT OF THE INTERIOR  
U.S. GEOLOGICAL SURVEY



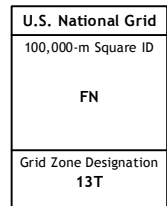
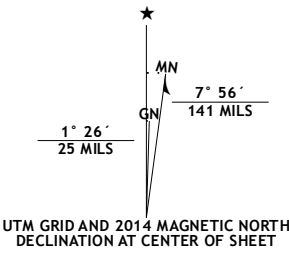
PETES CREEK QUADRANGLE  
NORTH DAKOTA  
7.5-MINUTE SERIES



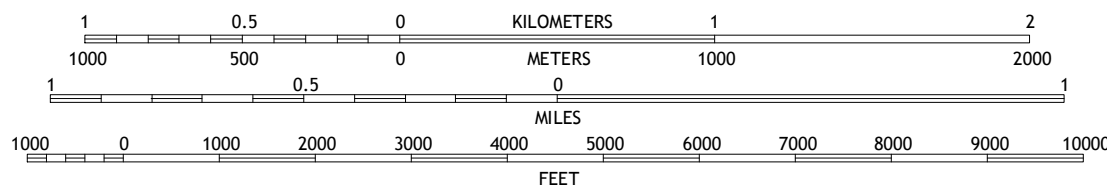
Produced by the United States Geological Survey  
North American Datum of 1983 (NAD83)  
World Geodetic System of 1984 (WGS84). Projection and  
1000-meter grid: Universal Transverse Mercator, Zone 13T  
10 000-foot ticks: North Dakota Coordinate System of 1983  
(south and north zones)

This map is not a legal document. Boundaries may be  
generalized for this map scale. Private lands within government  
reservations may not be shown. Obtain permission before  
entering private lands.

Imagery.....NAIP, June 2012 - July 2012  
Roads.....HERE ©2013  
Roads within US Forest Service Lands.....FS Topo Data  
with limited Forest Service updates, 2013  
Names.....GNS, 2013  
Hydrography.....National Hydrography Dataset, 2012  
Contours.....National Elevation Dataset, 2001  
Boundaries.....Multiple sources; see metadata file 1972 - 2013



SCALE 1:24 000



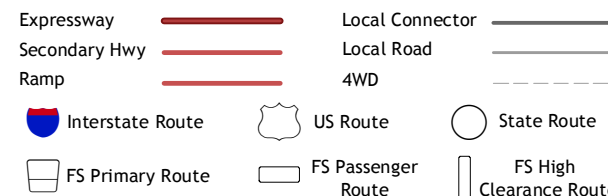
CONTOUR INTERVAL 20 FEET  
NORTH AMERICAN VERTICAL DATUM OF 1988

This map was produced to conform with the  
National Geospatial Program US Topo Product Standard, 2011.  
A metadata file associated with this product is draft version 0.6.16

|   |   |   |
|---|---|---|
| 1 | 2 | 3 |
| 4 | 5 | 6 |
| 7 | 8 |   |

1 Lone Butte  
2 Lone Butte SE  
3 North Killdeer Mountain  
4 Grassy Butte  
5 Killdeer Mountains  
6 Grassy Butte SW  
7 Grassy Butte SE  
8 Fayette

ROAD CLASSIFICATION



Check with local Forest Service unit  
for current travel conditions and restrictions.

PETES CREEK, ND  
2014

