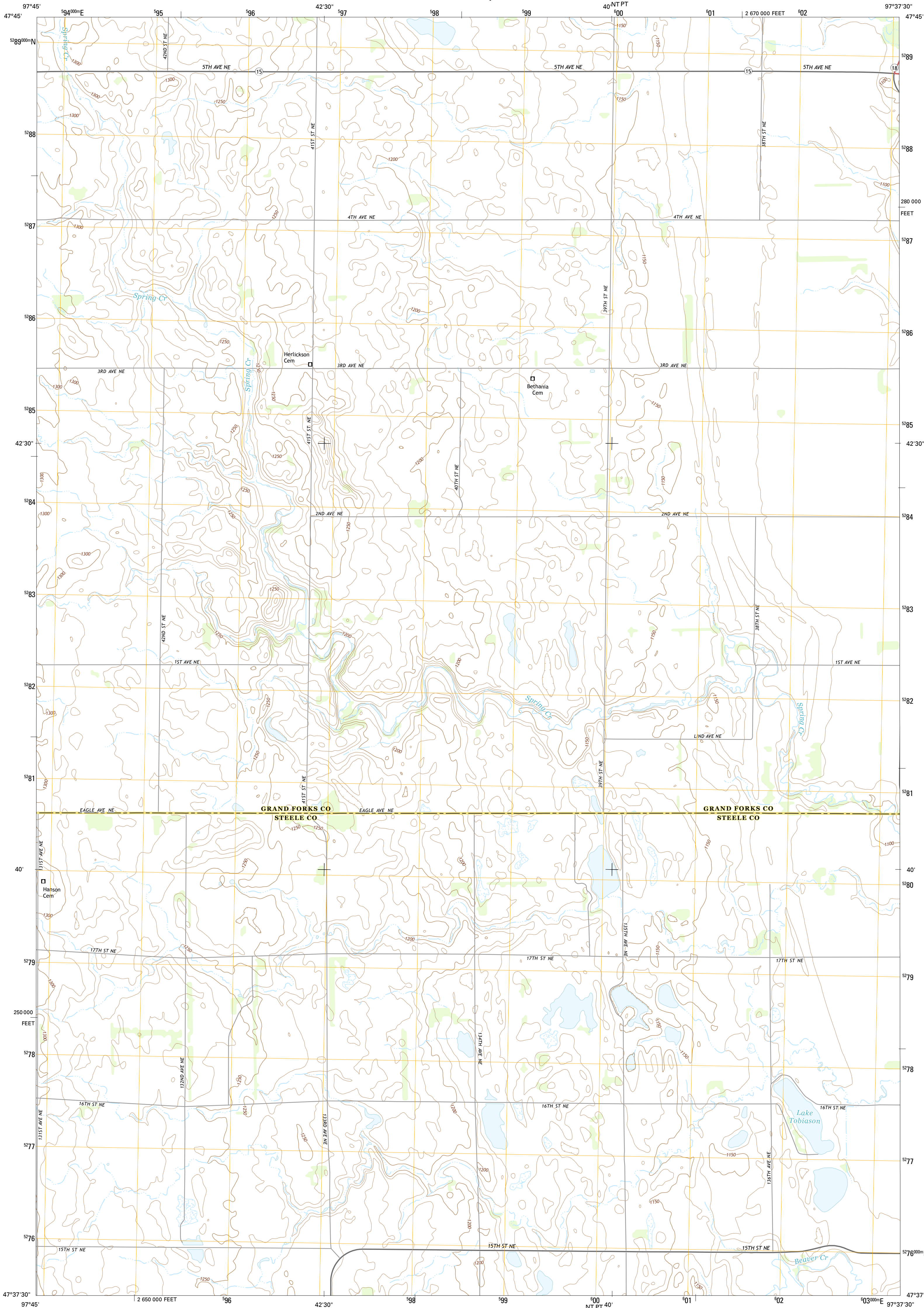




U.S. DEPARTMENT OF THE INTERIOR
U.S. GEOLOGICAL SURVEY



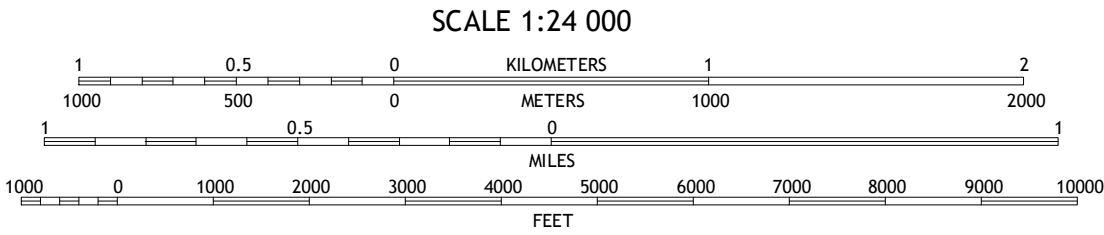
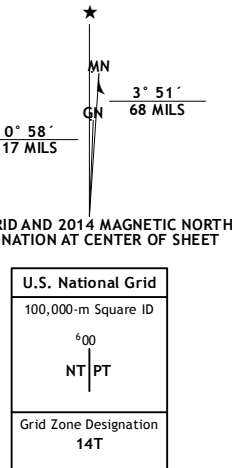
NORTHWOOD NW QUADRANGLE
NORTH DAKOTA
7.5-MINUTE SERIES



Produced by the United States Geological Survey
North American Datum of 1983 (NAD83)
World Geodetic System of 1984 (WGS84). Projection and
1 000-meter grid: Universal Transverse Mercator, Zone 14T
10 000-foot ticks: North Dakota Coordinate System of 1983
(north zone)

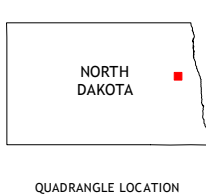
This map is not a legal document. Boundaries may be
generalized for this map scale. Private lands within government
reservations may not be shown. Obtain permission before
entering private lands.

Imagery.....NAIP.....July 2012
Roads.....HIRE.....02013
Names.....GNIS.....2013
Hydrography.....National Hydrography Dataset, 2012
Contours.....National Elevation Dataset, 2012
Boundaries.....Multiple sources; see metadata file 1972 - 2013



CONTOUR INTERVAL 10 FEET
NORTH AMERICAN VERTICAL DATUM OF 1988

This map was produced to conform with the
National Geospatial Program US Topo Product Standard, 2011.
A metadata file associated with this product is draft version 0.6.16



QUADRANGLE LOCATION

ROAD CLASSIFICATION
Expressway
Secondary Hwy
Ramp
Interstate Route
Local Connector
Local Road
4WD
US Route
State Route

1	2	3
4	5	6
7	8	

1 Logan Center
2 Larimore SW
3 Kempton
4 Finley NE
5 Northwood
6 Finley
7 Golden Lake
8 Northwood SE

NORTHWOOD NW, ND
2014

