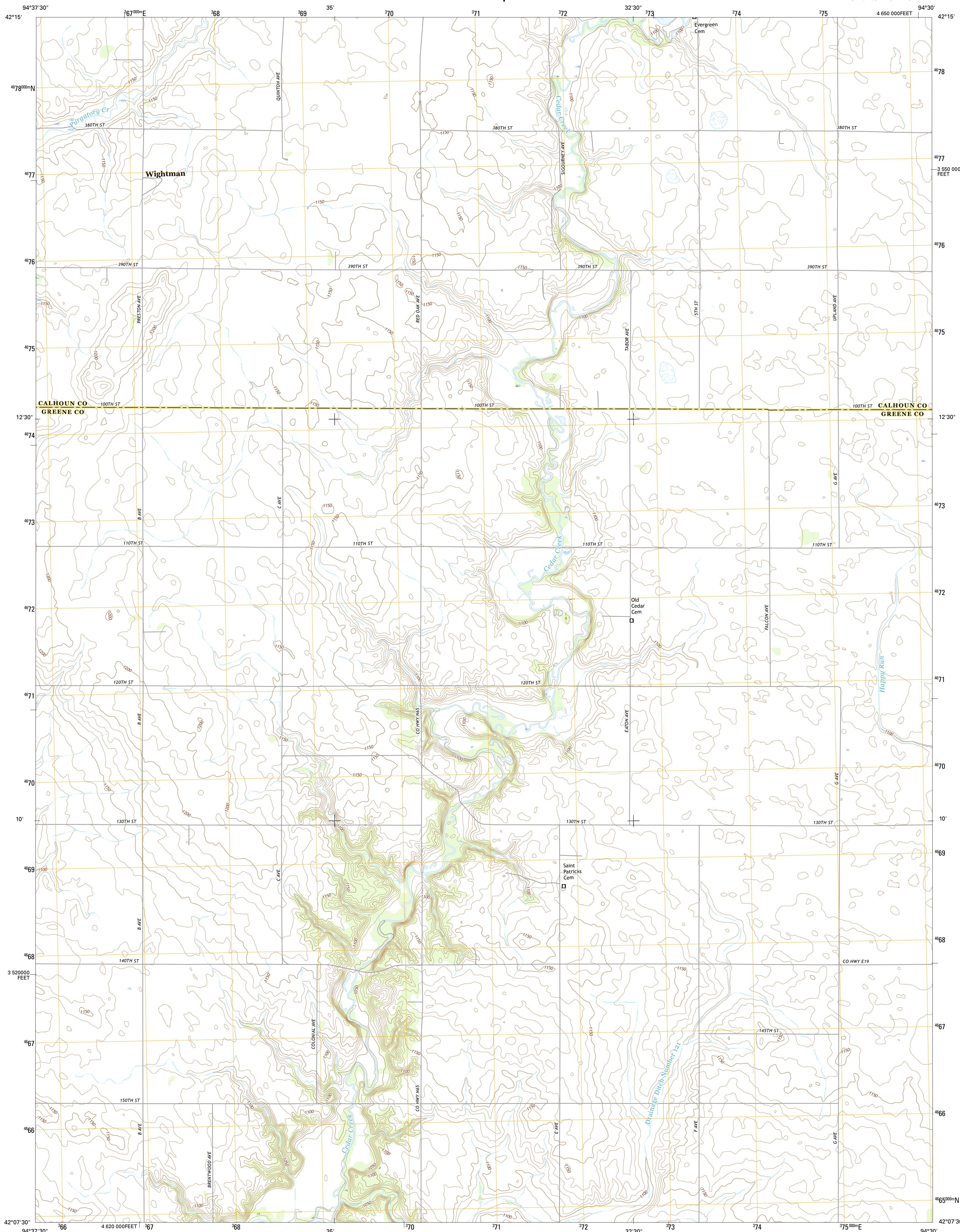




U.S. DEPARTMENT OF THE INTERIOR  
U.S. GEOLOGICAL SURVEY



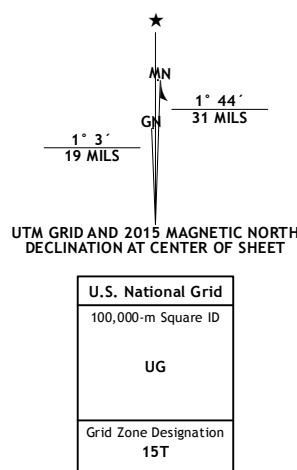
**WIGHTMAN QUADRANGLE**  
**IOWA**  
**7.5-MINUTE SERIES**



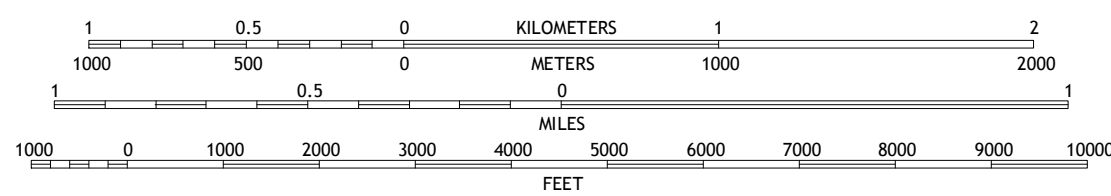
**Produced by the United States Geological Survey**  
North American Datum of 1983 (NAD83)  
World Geodetic System of 1984 (WGS84). Projection and  
1 000-meter grid: Universal Transverse Mercator, Zone 15T  
10 000-foot ticks: Iowa Coordinate System of 1983 (north zone)

This map is not a legal document. Boundaries may be generalized for this map scale. Private lands within government reservations may not be shown. Obtain permission before entering private lands.

Imagery.....	NAIP, September	2014
Roads.....	U.S. Census Bureau, 2014	2015
Names.....	GNIS,	2015
Hydrography.....	National Hydrography Dataset,	2014
Contours.....	National Elevation Dataset,	2006
Boundaries.....	Multiple sources; see metadata file	1972 - 2015
Public Land Survey System.....	BLM,	2014
Wetlands.....	FWS National Wetlands Inventory	1977 - 2014



SCALE 1:24 000



CONTOUR INTERVAL 10 FEET  
NORTH AMERICAN VERTICAL DATUM OF 1988

This map was produced to conform with the  
National Geospatial Program US Topo Product Standard, 2011.  
A metadata file associated with this product is draft version 0.6.19

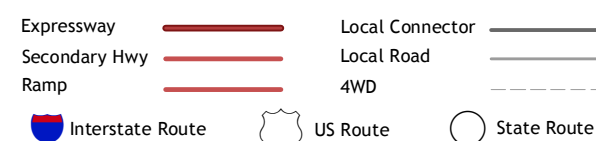


1	2	3
4		5
6	7	8

ADJOINING QUADRANGLES

- 1 Lake City
- 2 Lohrville
- 3 Farnhamville
- 4 Lanesboro
- 5 Churdan
- 6 Glidden
- 7 Scranton
- 8 Jefferson West

## ROAD CLASSIFICATION



WIGHTMAN, IA  
2015

