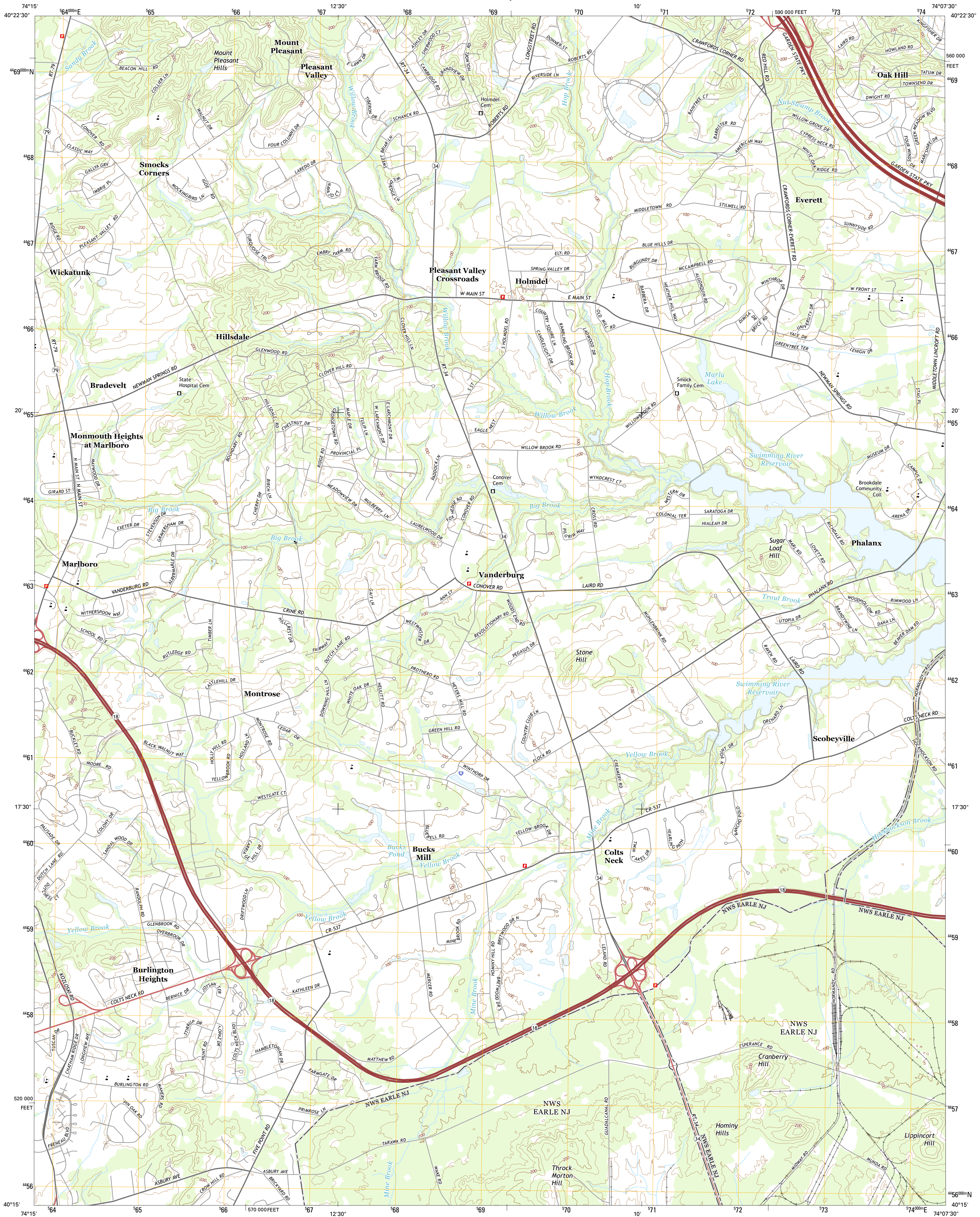




U.S. DEPARTMENT OF THE INTERIOR  
U.S. GEOLOGICAL SURVEY



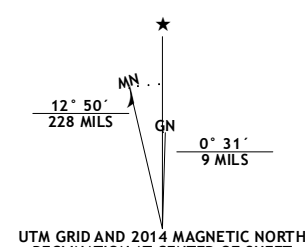
MARLBORO QUADRANGLE  
NEW JERSEY-MONMOUTH CO.  
7.5-MINUTE SERIES



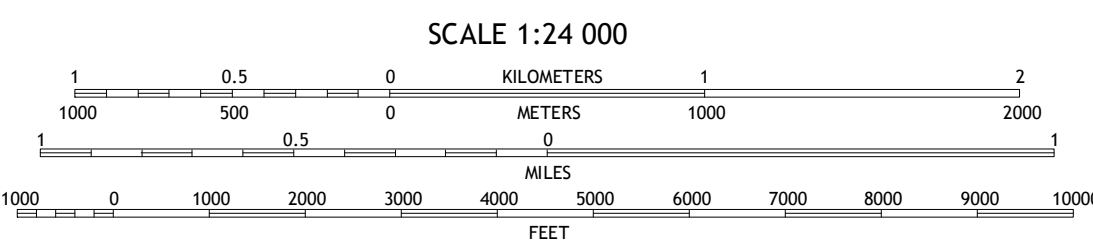
Produced by the United States Geological Survey  
North American Datum of 1983 (NAD83)  
World Geodetic System of 1984 (WGS84) Projection and  
1 000-meter grid: Universal Transverse Mercator, Zone 18T  
10 000-foot ticks: New Jersey Coordinate System of 1983

This map is not a legal document. Boundaries may be  
generalized for this map scale. Private lands within government  
reservations may not be shown. Obtain permission before  
entering private lands.

Imagery:.....NAIP, July 2010  
Roads:.....HERE, ©2013  
Names:.....GNIS, 2013  
Hydrography:.....National Hydrography Dataset, 2010  
Contours:.....National Elevation Dataset, 2013  
Boundaries:.....Multiple sources: see metadata file 1972 - 2013



U.S. National Grid  
100,000-m Square ID  
WK  
Grid Zone Designation  
18T



CONTOUR INTERVAL 20 FEET  
NORTH AMERICAN VERTICAL DATUM OF 1988  
This map was produced to conform with the  
National Geospatial Program US Topo Product Standard, 2011.  
A metadata file associated with this product is draft version 0.6.16



1	2	3
4	5	6
7	8	9

ADJOINING QUADRANGLES

ROAD CLASSIFICATION	
Expressway	Local Connector
Secondary Hwy	Local Road
Ramp	4WD
Interstate Route	US Route
	State Route

MARLBORO, NJ  
2014

