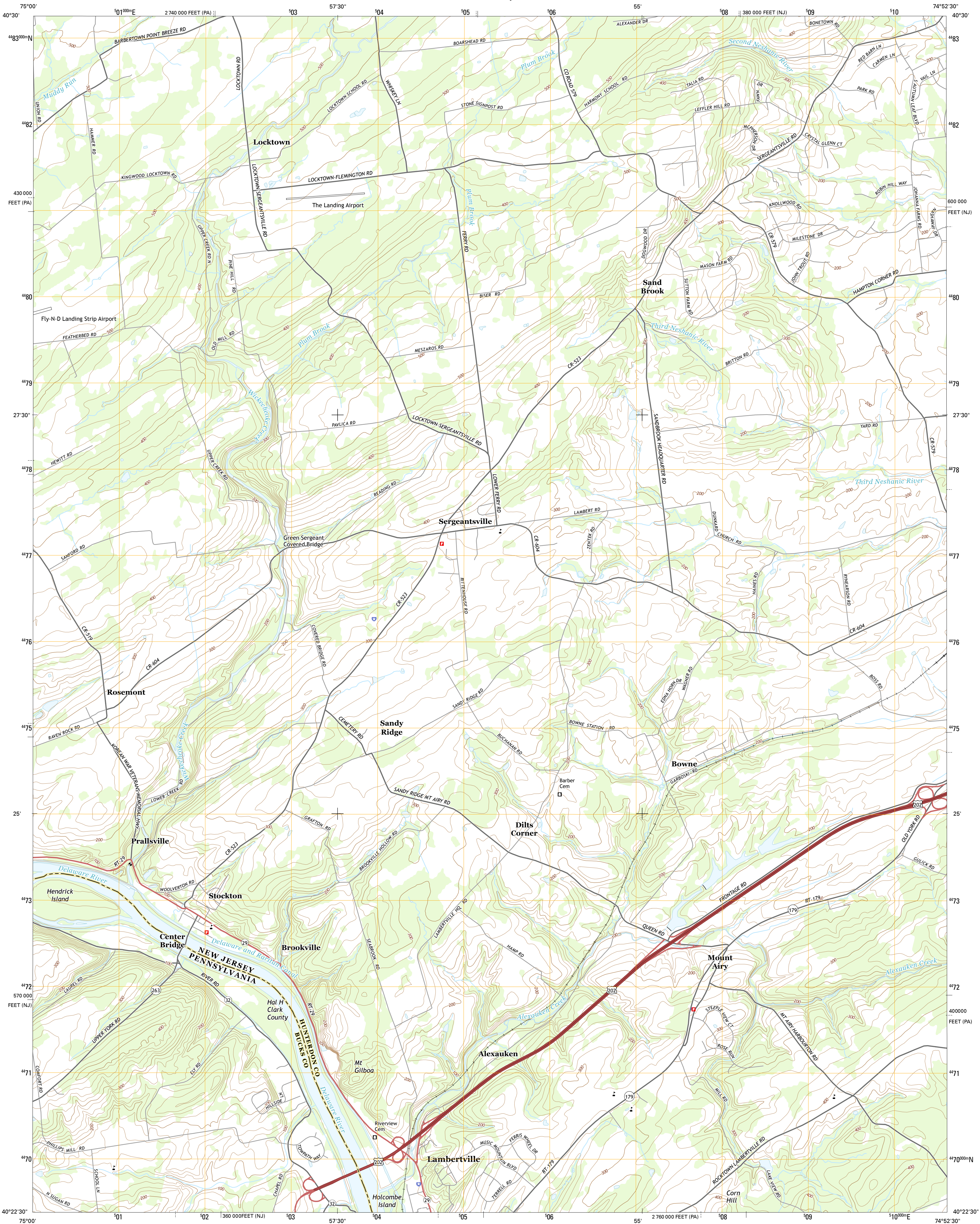




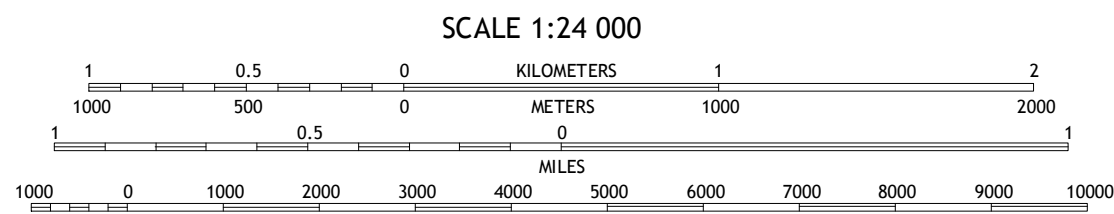
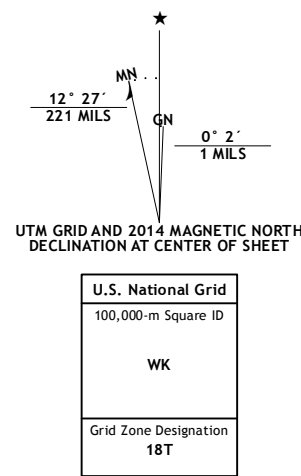
U.S. DEPARTMENT OF THE INTERIOR
U.S. GEOLOGICAL SURVEY



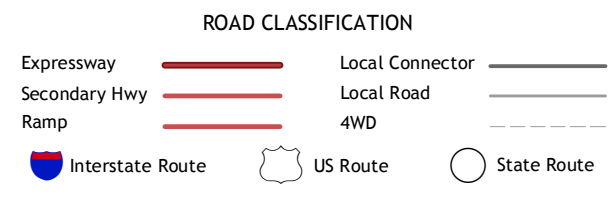
STOCKTON QUADRANGLE
NEW JERSEY-PENNSYLVANIA
7.5-MINUTE SERIES



Produced by the United States Geological Survey
North American Datum of 1983 (NAD83)
World Geodetic System of 1984 (WGS84)
1 000-meter grid: Universal Transverse Mercator, Zone 18T
10 000-foot ticks: New Jersey Coordinate System of 1983,
Pennsylvania Coordinate System of 1983 (south zone)
This map is not a legal document. Boundaries may be
generalized for this map scale. Private lands within government
reservations may not be shown. Obtain permission before
entering private lands.
Imagery:.....NAIP, July 2010
Roads:.....HERE, ©2013
Names:.....GNIS, 2013
Hydrography:.....National Hydrography Dataset, 2010
Contours:.....National Elevation Dataset, 2000
Boundaries:.....Multiple sources; see metadata file 1972 - 2013



CONTOUR INTERVAL 20 FEET
NORTH AMERICAN VERTICAL DATUM OF 1988
This map was produced to conform with the
National Geospatial Program US Topo Product Standard, 2011.
A metadata file associated with this product is draft version 0.6.16



1	2	3
4	5	6
7	8	9

ADJOINING QUADRANGLES

STOCKTON, NJ-PA
2014

