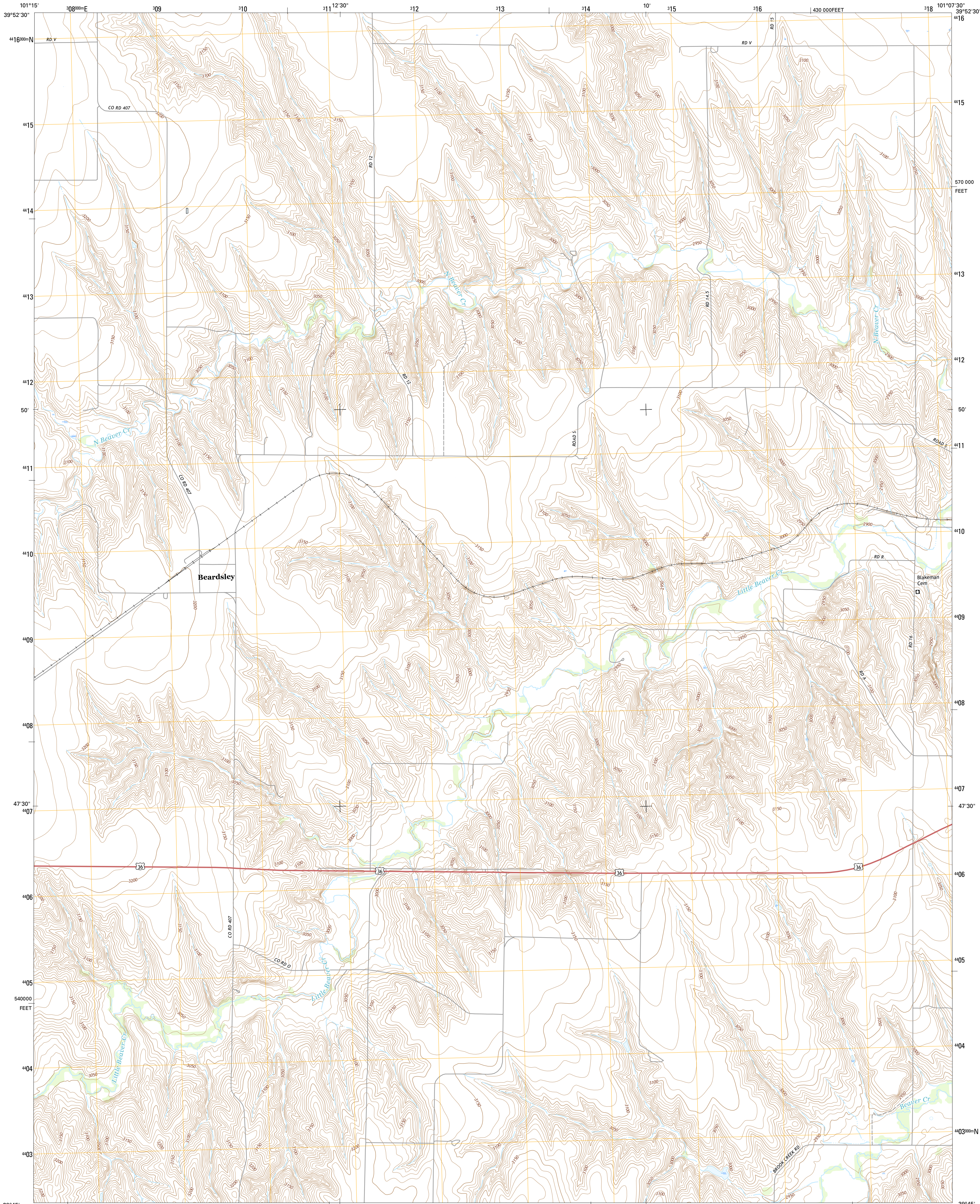




U.S. DEPARTMENT OF THE INTERIOR  
U.S. GEOLOGICAL SURVEY



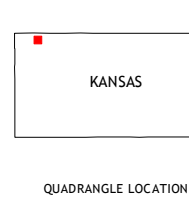
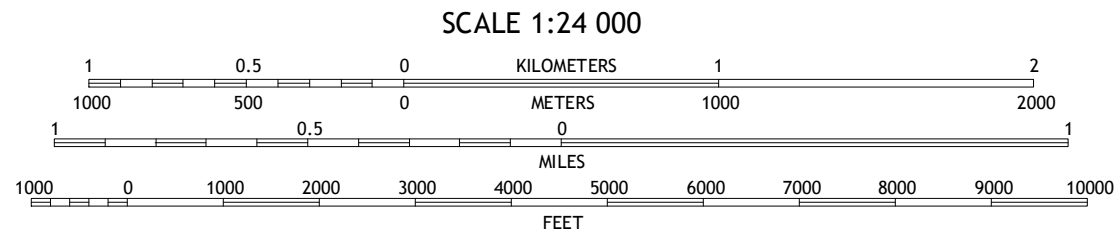
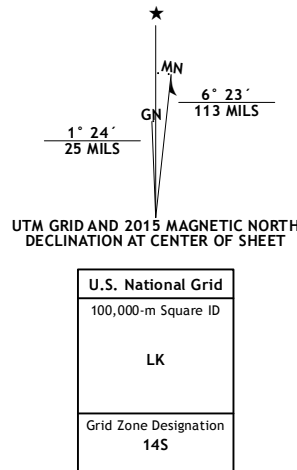
BEARDSLEY QUADRANGLE  
KANSAS-RAWLINS CO.  
7.5-MINUTE SERIES



Produced by the United States Geological Survey  
North American Datum of 1983 (NAD83)  
World Geodetic System of 1984 (WGS84). Projection and  
1 000-meter grid: Universal Transverse Mercator, Zone 14S  
10 000-foot ticks: Kansas Coordinate System of 1983 (north  
zone)

This map is not a legal document. Boundaries may be  
generalized for this map scale. Private lands within government  
reservations may not be shown. Obtain permission before  
entering private lands.

Imagery.....NAIP, July 2014  
Roads.....U.S. Census Bureau, 2014 2015  
Names.....GNIS, 2015  
Hydrography.....National Hydrography Dataset, 2014  
Contours.....National Elevation Dataset, 2006  
Boundaries.....Multiple sources; see metadata file 1972 - 2015  
Public Land Survey System.....BLM, 2015  
Wetlands.....FWS National Wetlands Inventory 1977 - 2014



ROAD CLASSIFICATION

Expressway  
Secondary Hwy  
Ramp

Local Connector  
Local Road  
4WD

US Route  
State Route

1	2	3
4	5	6
7	8	9

ADJOINING QUADRANGLES

1 McDonald NE  
2 Atwood NW  
3 Atwood NE  
4 McDonald  
5 Atwood  
6 Dewey Ranch  
7 Chardon NW  
8 Chardon

BEARDSLEY, KS  
2015

