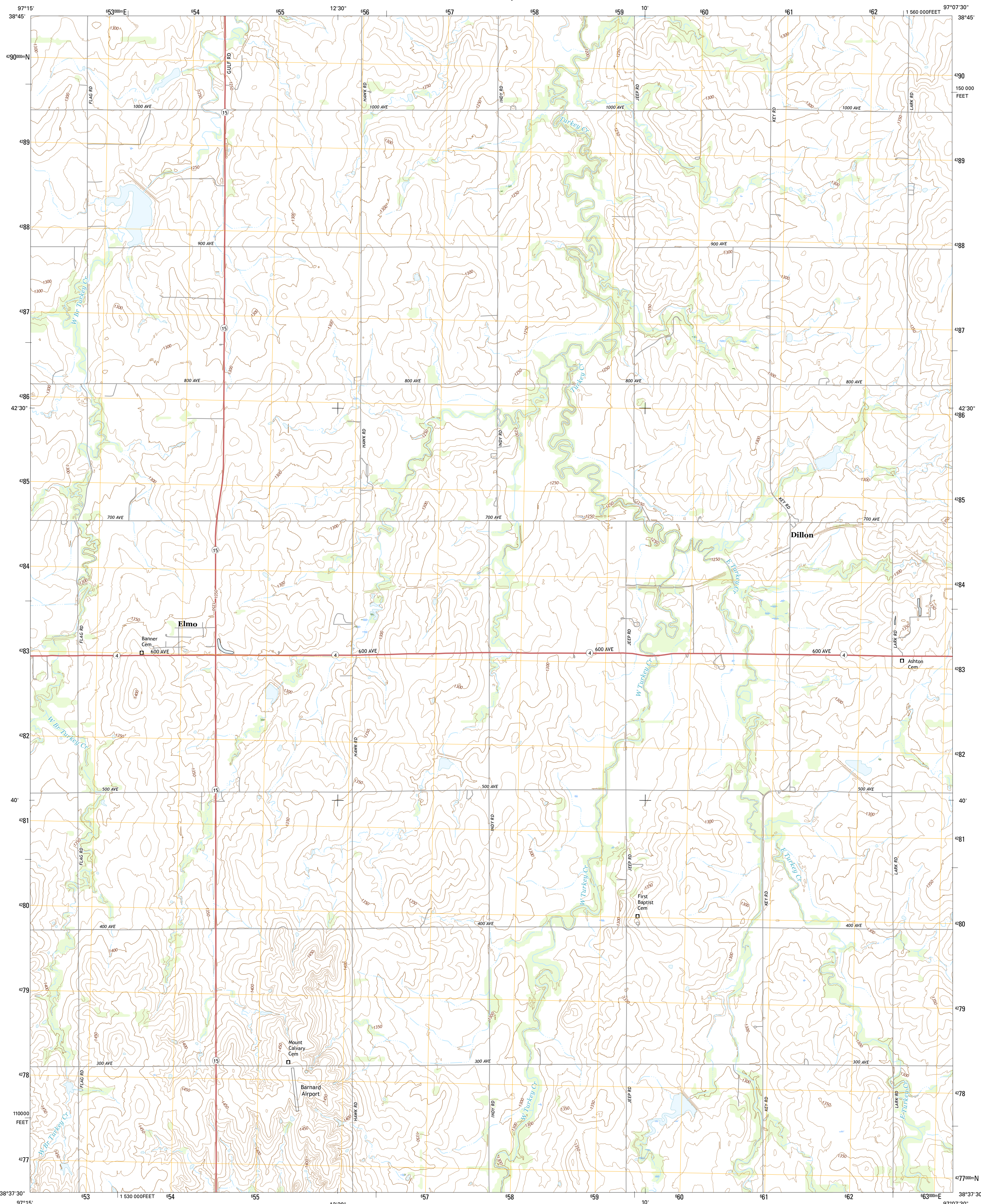




U.S. DEPARTMENT OF THE INTERIOR
U.S. GEOLOGICAL SURVEY



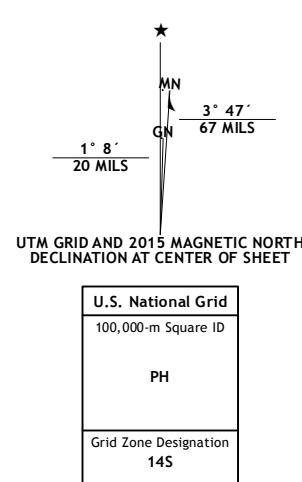
ELMO QUADRANGLE
KANSAS-DICKINSON CO.
7.5-MINUTE SERIES



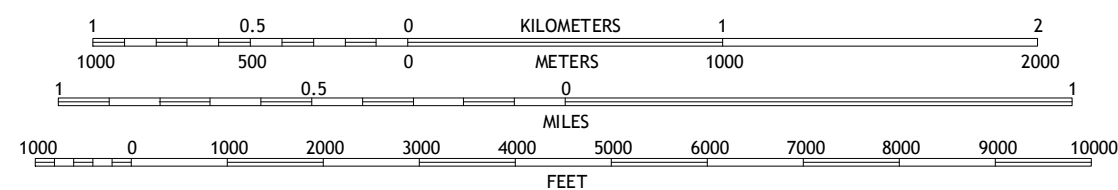
Produced by the United States Geological Survey
North American Datum of 1983 (NAD83)
World Geodetic System of 1984 (WGS84). Projection and
1 000-meter grid: Universal Transverse Mercator, Zone 14S
10 000-foot ticks: Kansas Coordinate System of 1983 (north
zone)

This map is not a legal document. Boundaries may be generalized for this map scale. Private lands within government reservations may not be shown. Obtain permission before entering private lands.

| | | | |
|--------------------------------|-------------------------------------|------|------|
| Imagery..... | NAIP, | July | 2014 |
| Roads..... | U.S. Census Bureau, | 2014 | 2015 |
| Names..... | GNIS, | | 2015 |
| Hydrography..... | National Hydrography Dataset, | | 2014 |
| Contours..... | National Elevation Dataset, | | 2014 |
| Boundaries..... | Multiple sources; see metadata file | 1972 | 2015 |
| Public Land Survey System..... | BLM, | | 2015 |
| Wetlands..... | FWS National Wetlands Inventory | 1977 | 2014 |

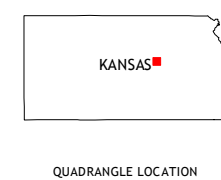


SCALE 1:24 000

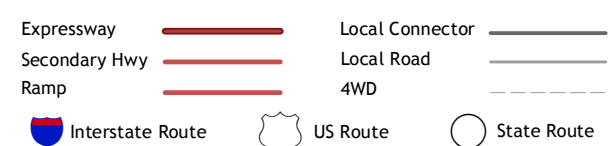


CONTOUR INTERVAL 10 FEET
NORTH AMERICAN VERTICAL DATUM OF 1988

This map was produced to conform with the
National Geospatial Program US Topo Product Standard, 2011.
Data file associated with this product is draft version 0.6.19



ROAD CLASSIFICATION



| | | | |
|---|---|---|--------------|
| 1 | 2 | 3 | 1 Holland |
| 4 | | 5 | 2 Abilene SW |
| 6 | 7 | 8 | 3 Navarre |

4 Carlton
5 Hope
6 Gypsum SE
7 Tampa
8 Ramona

ADJOINING QUADRANGLES

ELMO, KS
2015

