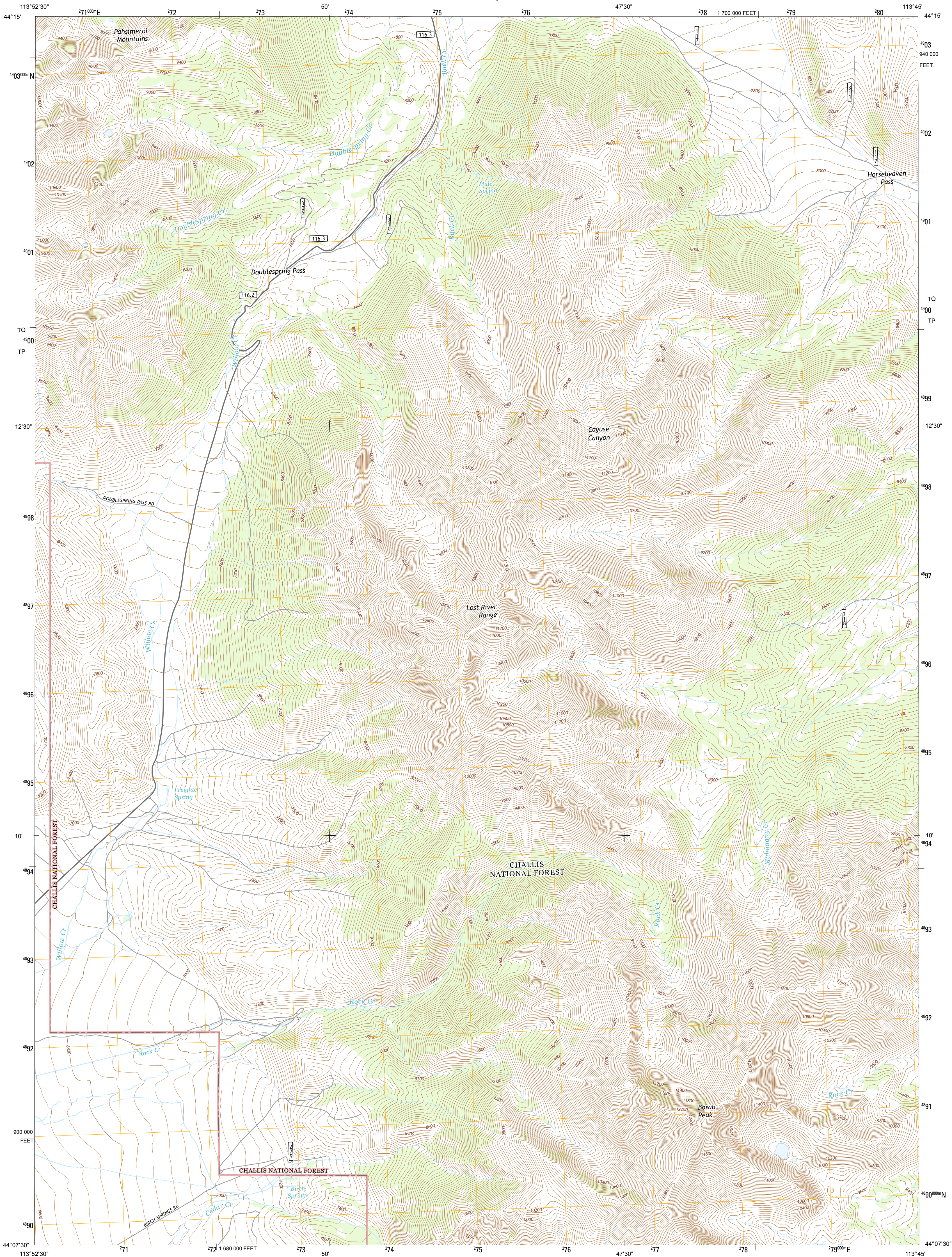




U.S. DEPARTMENT OF THE INTERIOR
U. S. GEOLOGICAL SURVEY



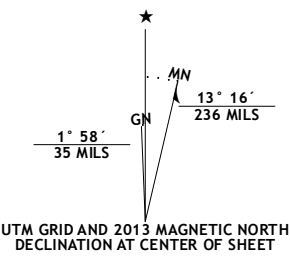
BORAH PEAK QUADRANGLE
IDAHO-CUSTER CO.
7.5-MINUTE SERIES



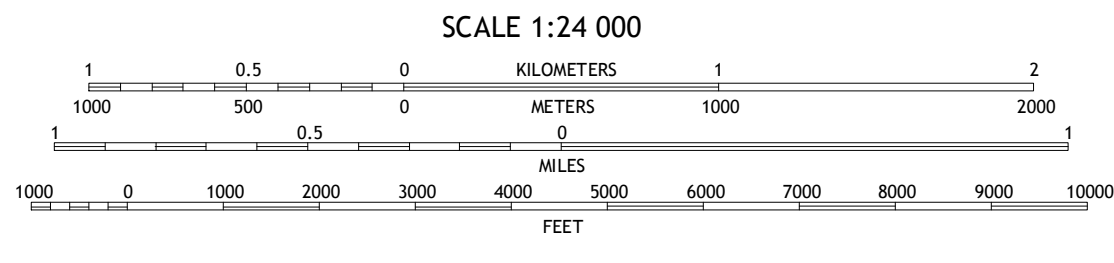
Produced by the United States Geological Survey
North American Datum of 1983 (NAD83)
World Geodetic System of 1984 (WGS84). Projection and
1 000-meter grid: Universal Transverse Mercator, Zone 12T
10 000-foot ticks: Idaho Coordinate System of 1983 (central
zone)

This map is not a legal document. Boundaries may be
generalized for this map scale. Private lands within government
reservations may not be shown. Obtain permission before
entering private lands.

Imagery.....NAP, August 2011
Roads.....G2006-2013, TomTom
Roads within US Forest Service Lands.....FS Topo Data
with limited Forest Service updates, 2013
Names.....GNIS, 2013
Hydrography.....National Hydrography Dataset, 2011
Contours.....National Elevation Dataset, 2002
Boundaries.....BWC, IBC, USGS, 1972 - 2012
Public Land Survey System.....BLM, 2011



U.S. National Grid
100,000 m Square ID
TQ
TP
Grid Zone Designation
12T



CONTOUR INTERVAL 40 FEET
NORTH AMERICAN VERTICAL DATUM OF 1988
This map was produced to conform with the
National Geospatial Program US Topo Product Standard, 2011.
A metadata file associated with this product is draft version 0.6.15



Grouse Creek Mountain	Doublespring	Spring Hill
Dickey Peak	Borah Peak	Burnt Creek
Chilly Buttes	Elkhorn Creek	Leatherman Peak

ROAD CLASSIFICATION
Expressway
Secondary Hwy
Ramp
Interstate Route
FS Primary Route
Local Connector
Local Road
4WD
US Route
FS Passenger Route
State Route
FS High
Clearance Route

Check with local Forest Service unit
for current travel conditions and restrictions.

BORAH PEAK, ID
2013

