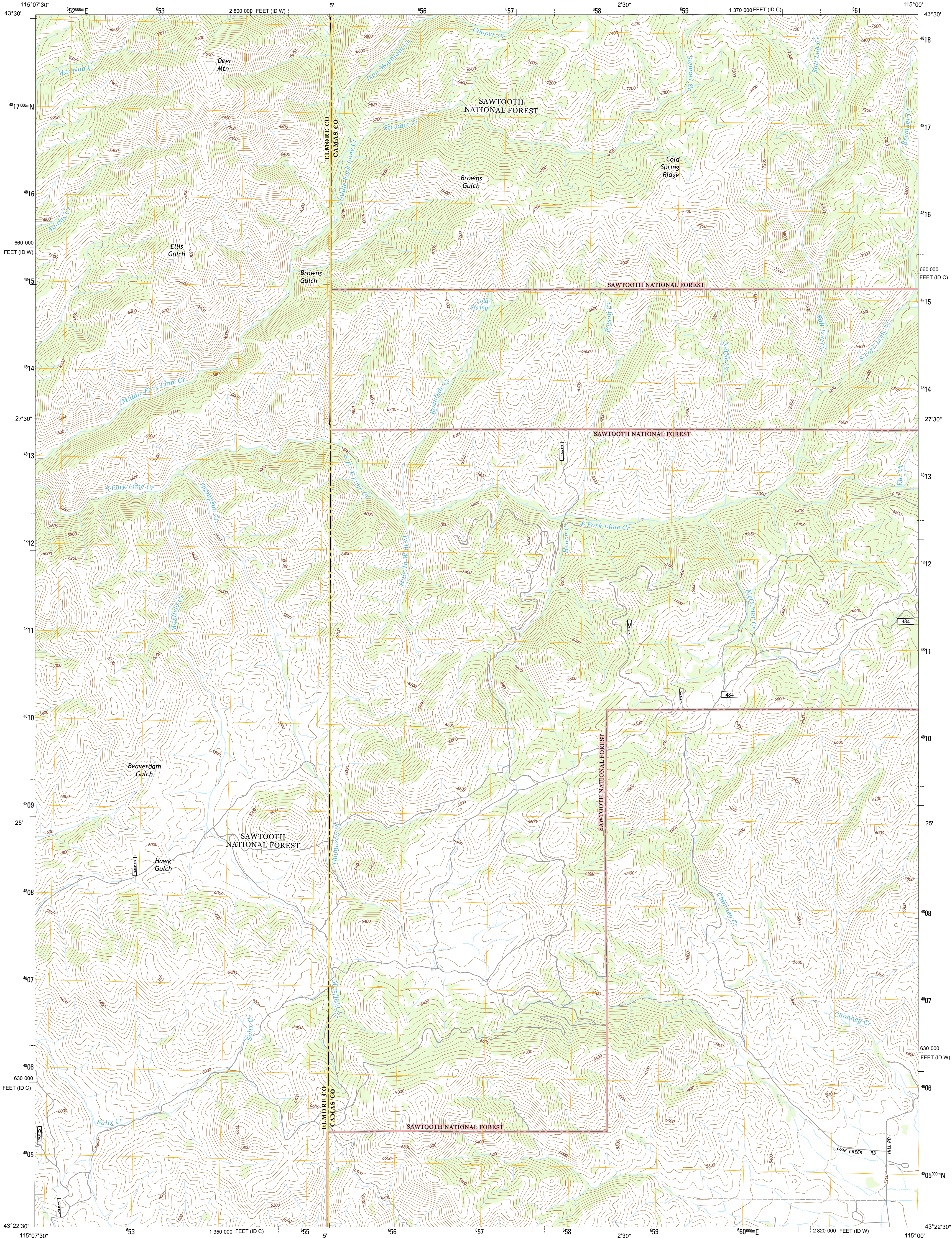




U.S. DEPARTMENT OF THE INTERIOR
U. S. GEOLOGICAL SURVEY



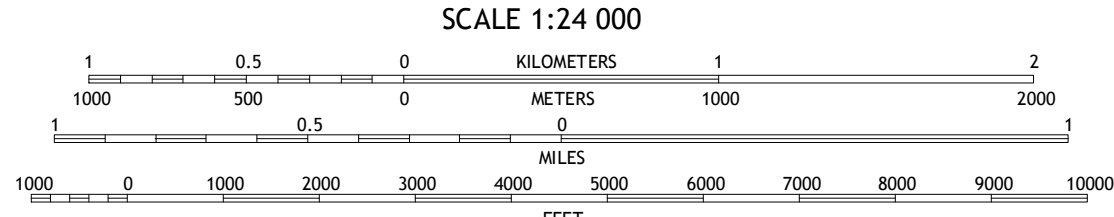
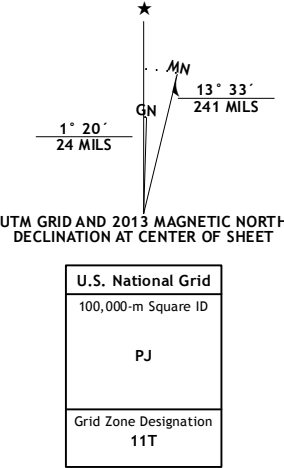
DEER MOUNTAIN QUADRANGLE
IDAHO
7.5-MINUTE SERIES



Produced by the United States Geological Survey
North American Datum of 1983 (NAD83)
World Geodetic System of 1984 (WGS84). Projection and
1 000-meter grid: Universal Transverse Mercator, Zone 11T
10 000-foot ticks: Idaho Coordinate System of 1983 (central and
west zones)

This map is not a legal document. Boundaries may be
generalized for this map scale. Private lands within government
reservations may not be shown. Obtain permission before
entering private lands.

Imagery.....NAIP, June 2011 - August 2011
Roads.....©2006-2013 TomTom
Roads within US Forest Service Lands.....FS Topo Data
with limited Forest Service updates, 2013
Names.....GNIS, 2013
Hydrography.....National Hydrography Dataset, 2011
Contours.....National Elevation Dataset, 2001
Boundaries.....Census, IBWC, IBC, USGS, 1972 - 2012
Public Land Survey System.....BLM, 2011



This map was produced to conform with the
National Geospatial Program US Topo Product Standard, 2011.
A metadata file associated with this product is draft version 0.6.15



Grouse Butte	Jumbo Mountain	Boardman Creek
Sprout Mountain	Deer Mountain	Smoky Dome
High Prairie	Hill City	Corral

ROAD CLASSIFICATION			
Expressway	Local Connector		
Secondary Hwy	Local Road		
Ramp	4WD		
Interstate Route	US Route	State Route	
FS Primary Route	FS Passenger Route	FS High Clearance Route	

Check with local Forest Service unit
for current travel conditions and restrictions.

DEER MOUNTAIN, ID
2013

