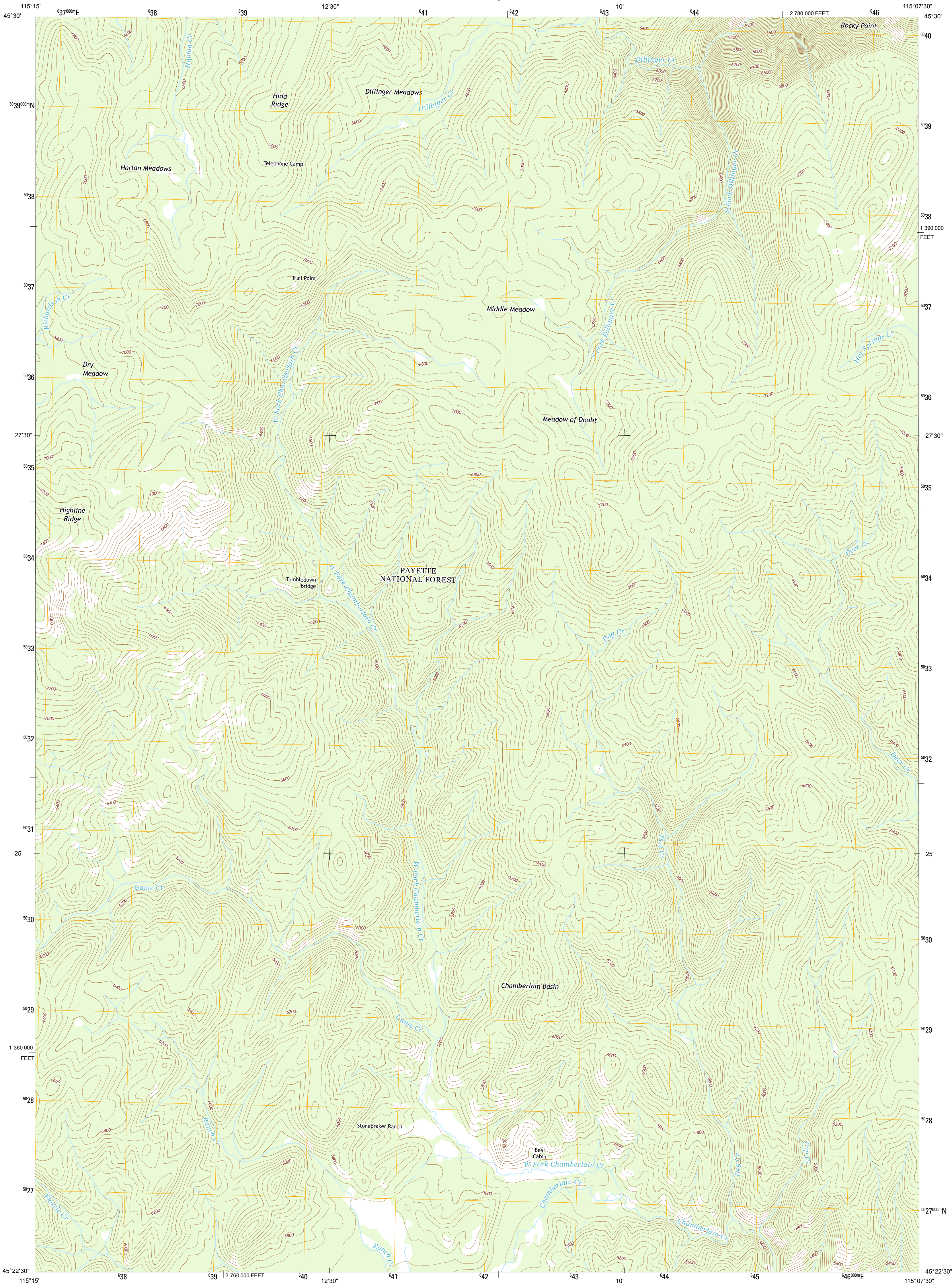




U.S. DEPARTMENT OF THE INTERIOR
U. S. GEOLOGICAL SURVEY



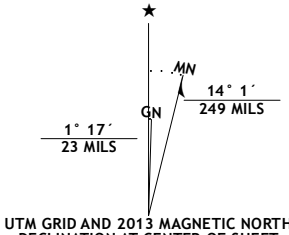
MEADOW OF DOUBT QUADRANGLE
IDAHO-IDAHO CO.
7.5-MINUTE SERIES



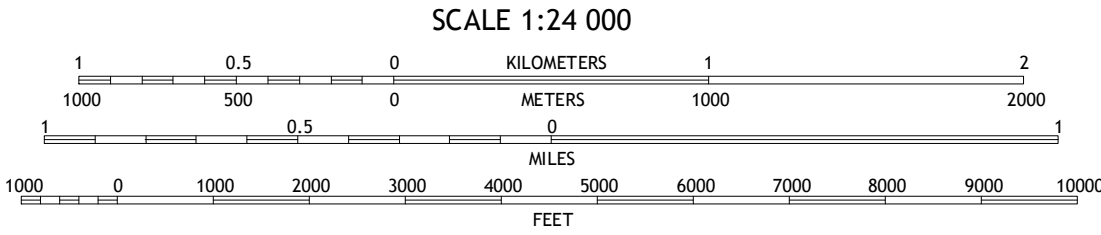
Produced by the United States Geological Survey
North American Datum of 1983 (NAD83)
World Geodetic System of 1984 (WGS84). Projection and
1 000-meter grid: Universal Transverse Mercator, Zone 11T
10 000-foot ticks: Idaho Coordinate System of 1983 (west zone)

This map is not a legal document. Boundaries may be
generalized for this map scale. Private lands within government
reservations may not be shown. Obtain permission before
entering private lands.

Imagery.....N.A.P., August 2011
Roads.....02/2006-2013 TomTom
Roads within US Forest Service Lands.....FSTopo Data
with limited Forest Service updates, 2013
Names.....GNIS, 2013
Hydrography.....National Hydrography Dataset, 2011
Contours.....National Elevation Dataset, 2002
Boundaries.....Census, BWC, BIC, USGS, 1972 - 2012
Public Land Survey System.....BLM, 2011



| |
|---|
| U.S. National Grid 100,000-m Square ID |
| PL |
| Grid Zone Designation 11T |



CONTOUR INTERVAL 40 FEET
NORTH AMERICAN VERTICAL DATUM OF 1988
This map was produced to conform with the
National Geospatial Program US Topo Product Standard, 2011.
A metadata file associated with this product is draft version 0.6.15



QUADRANGLE LOCATION

| | | |
|------------------------|--------------------|-----------------|
| Whitewater Ranch | Hida Point | Sheep Hill |
| Sheepwater Mountain | Meadow of Doubt | Arctic Point |
| Mesquite Peak | Lodgepole Creek | Wapiti Creek |

ADJOINING 7.5 QUADRANGLES

| ROAD CLASSIFICATION | | |
|---------------------|--------------------|-------------------------|
| Expressway | Local Connector | |
| Secondary Hwy | Local Road | |
| Ramp | 4WD | |
| Interstate Route | US Route | State Route |
| FS Primary Route | FS Passenger Route | FS High Clearance Route |

Check with local Forest Service unit
for current travel conditions and restrictions.

MEADOW OF DOUBT, ID
2013



NSN
NGA REF NO