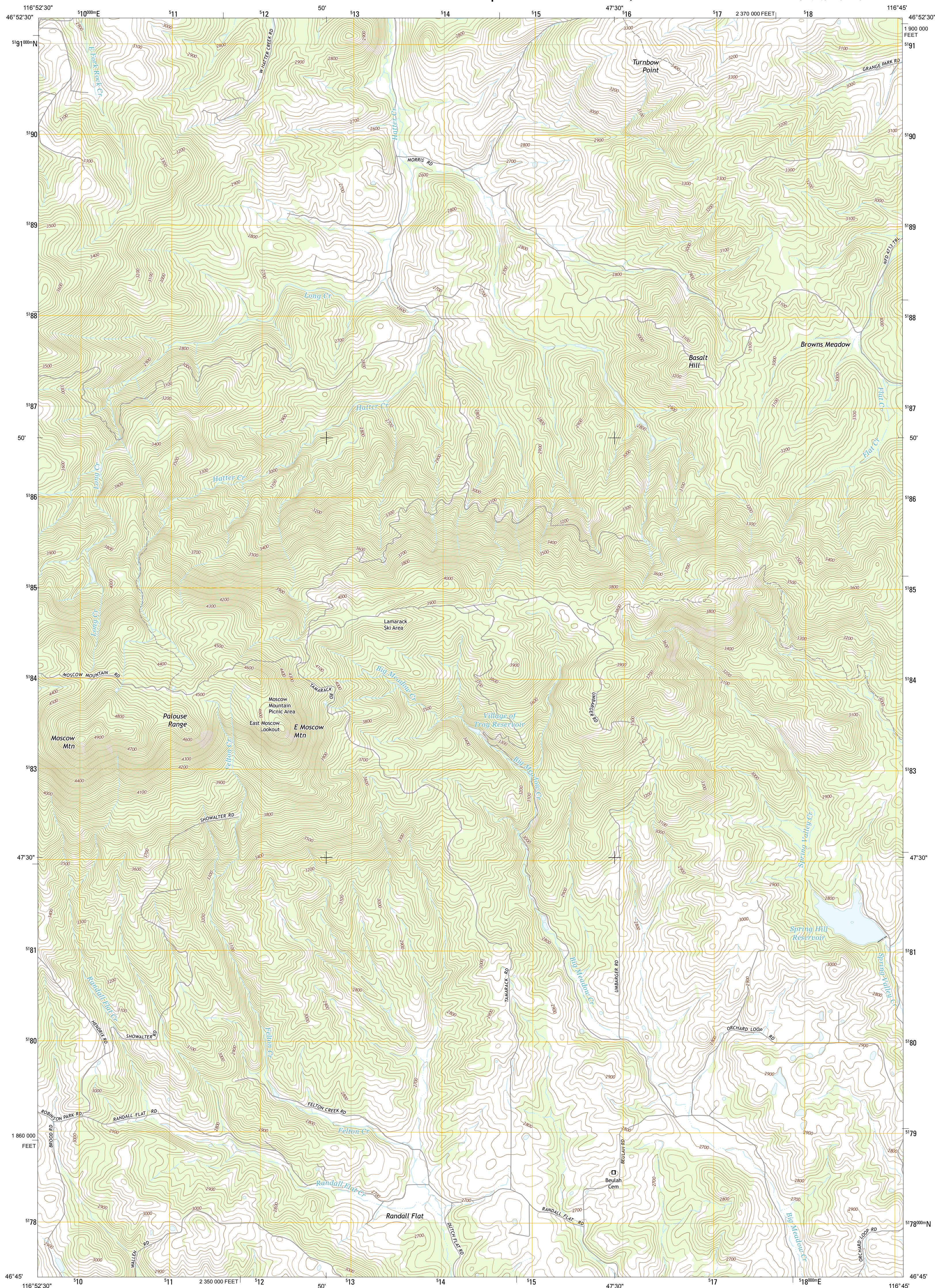




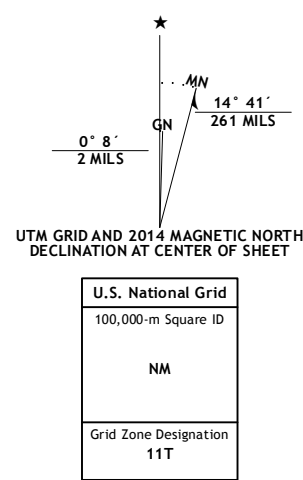
MOSCOW MOUNTAIN QUADRANGLE
IDAHO-LATAH CO.
7.5-MINUTE SERIES



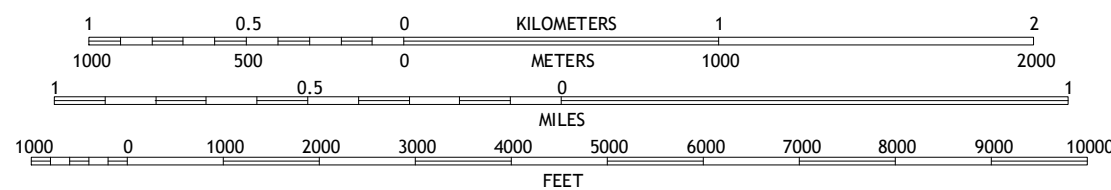
Produced by the United States Geological Survey
North American Datum of 1983 (NAD83)
World Geodetic System of 1984 (WGS84). Projection and
1 000-meter grid: Universal Transverse Mercator, Zone 11T
10 000-foot ticks: Idaho Coordinate System of 1983 (west zone)

This map is not a legal document. Boundaries may be generalized for this map scale. Private lands within government reservations may not be shown. Obtain permission before entering private lands.

| | | |
|---|--|---|
| Imagery..... | NAIP, July 2006 | 2 |
| Roads..... | ©2006-2013 TomTom | 2 |
| Roads within US Forest Service Lands..... | FTSP02 | 2 |
| | with limited Forest Service updates, 2006-2013 | 2 |
| Names..... | GNIS, 2006-2013 | 2 |
| Hydrography..... | National Hydrography Dataset, 2006-2013 | 2 |
| Contours..... | National Elevation Dataset, 2006-2013 | 2 |
| Boundaries..... | Census, IBWC, IBC, USGS, 1972 - 2013 | 2 |
| Public Land Survey System..... | BLM, 2006-2013 | 2 |



SCALE 1:24 000



CONTOUR INTERVAL 20 FEET
NORTH AMERICAN VERTICAL DATUM OF 1988

This map was produced to conform with the
National Geospatial Program US Topo Product Standard, 2011.
A metadata file associated with this product is draft version 0.6.15

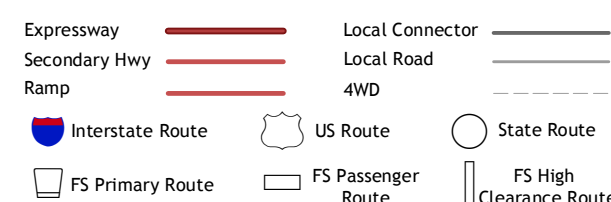


QUADRANGLE LOCATION

| | | |
|---------------|-----------------|-------------------|
| Potlatch | Princeton | Harvard |
| Robinson Lake | Moscow Mountain | Stanford |
| Moscow East | Troy | Little Bear Ridge |

ADJOINING 7.5' QUADRANGLES

ROAD CLASSIFICATION



Check with local Forest Service unit
for current travel conditions and restrictions.

MOSCOW MOUNTAIN, ID
2014

