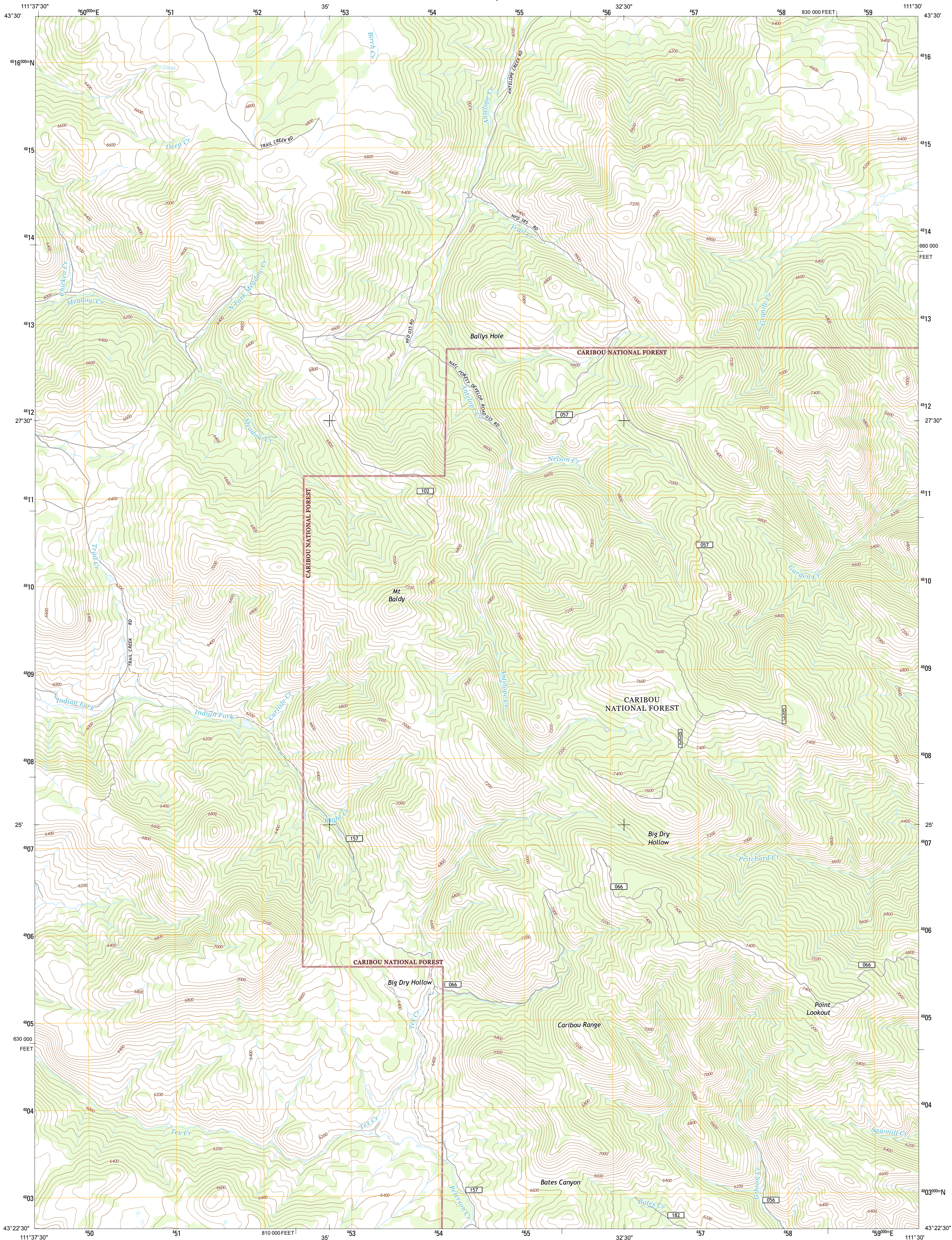




U.S. DEPARTMENT OF THE INTERIOR
U. S. GEOLOGICAL SURVEY



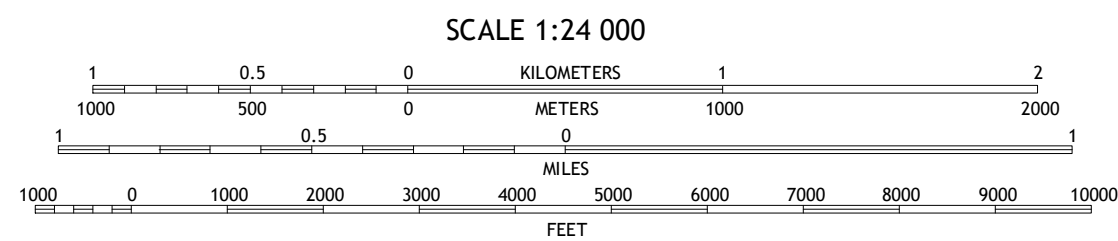
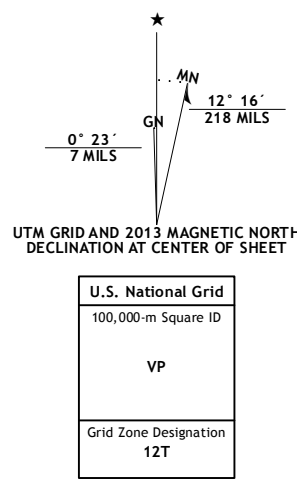
POINT LOOKOUT QUADRANGLE
IDAHO-BONNEVILLE CO.
7.5-MINUTE SERIES



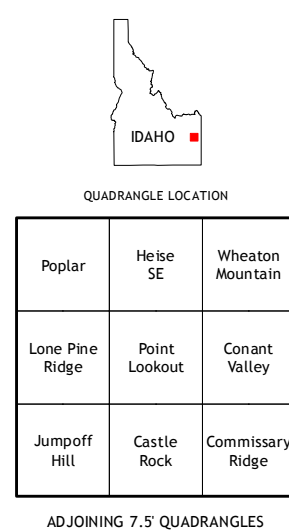
Produced by the United States Geological Survey
North American Datum of 1983 (NAD83)
World Geodetic System of 1984 (WGS84). Projection and
1 000-meter grid: Universal Transverse Mercator, Zone 12T
10 000-foot ticks: Idaho Coordinate System of 1983 (east zone)

This map is not a legal document. Boundaries may be
generalized for this map scale. Private lands within government
reservations may not be shown. Obtain permission before
entering private lands.

Imagery:.....NAIP, July 2011 - August 2011
Roads:.....©2006-2013 TomTom
Roads within US Forest Service Lands.....FS Topo Data
with limited Forest Service updates, 2013
Names:.....GNIS, 2013
Hydrography:.....National Hydrography Dataset, 2011
Contours:.....National Elevation Dataset, 2001
Boundaries:.....IBWC, IBC, USGS, 1972 - 2012
Public Land Survey System:.....BLM, 2011



CONTOUR INTERVAL 40 FEET
NORTH AMERICAN VERTICAL DATUM OF 1988
This map was produced to conform with the
National Geospatial Program US Topo Product Standard, 2011.
A metadata file associated with this product is draft version 0.6.15



ROAD CLASSIFICATION
Expressway: thick red line
Secondary Hwy: thin red line
Ramp: red line with blue circle
Interstate Route: blue circle with red number
FS Primary Route: white box with black number
Local Connector: thin black line
Local Road: thin black line
4WD: dashed black line
US Route: black line with shield
FS Passenger Route: white box with black number
State Route: black line with circle
FS High Clearance Route: black line with vertical bars
Check with local Forest Service unit
for current travel conditions and restrictions.

POINT LOOKOUT, ID
2013

