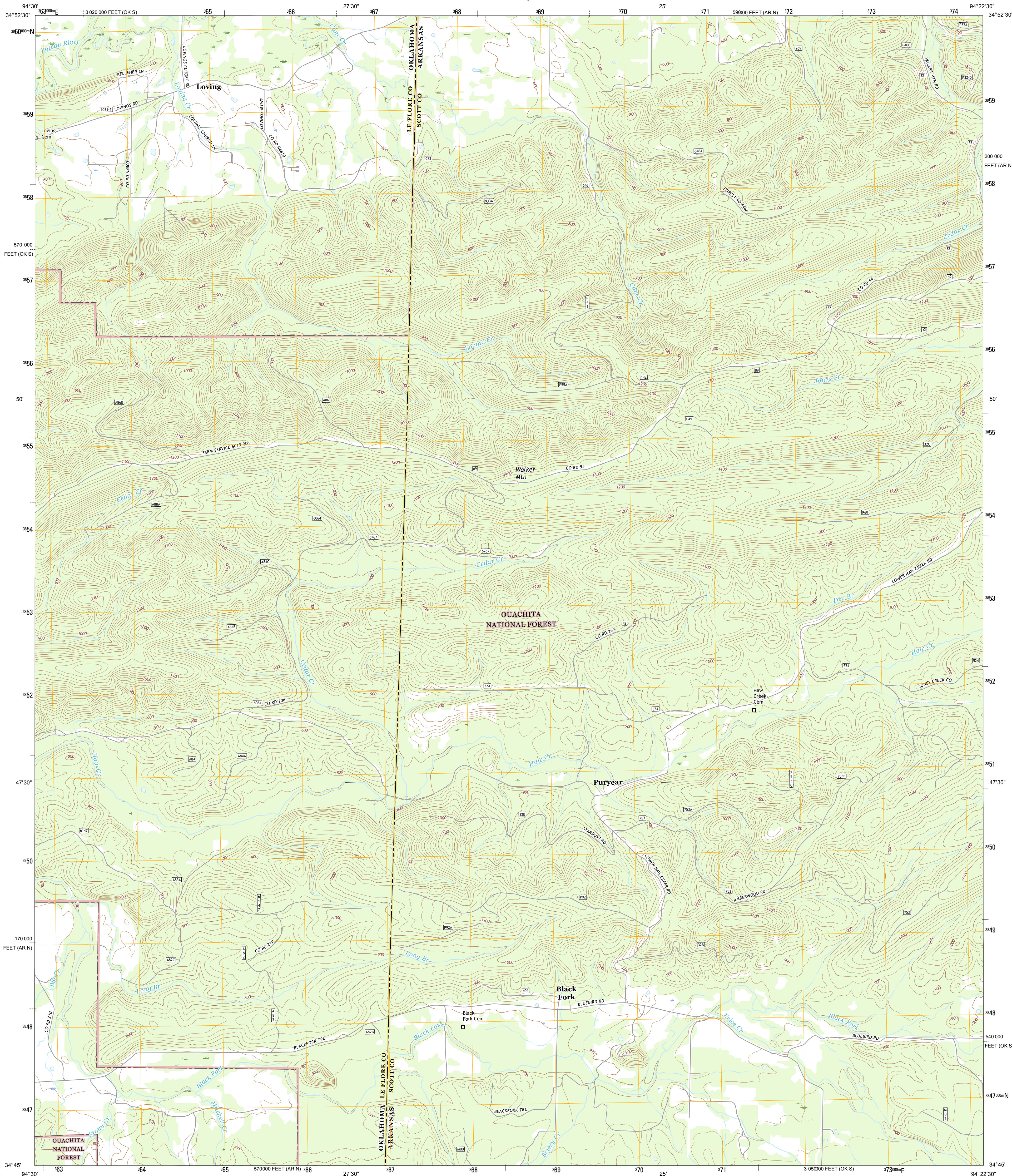




U.S. DEPARTMENT OF THE INTERIOR
U.S. GEOLOGICAL SURVEY



LOVING QUADRANGLE
OKLAHOMA-ARKANSAS
7.5-MINUTE SERIES



Produced by the United States Geological Survey
North American Datum of 1983 (NAD83)
World Geodetic System of 1984 (WGS84), Projection and
1 000-meter grid: Universal Transverse Mercator, Zone 15S
10 000-foot ticks: Arkansas Coordinate System of 1983 (north
zone), Oklahoma Coordinate System of 1983 (south zone)

This map is not a legal document. Boundaries may be
generalized for this map scale. Private lands within government
reservations may not be shown. Obtain permission before
entering private lands.

Images:.....NAIP, August 2013
Roads:.....U.S. Census Bureau, 2014 - 2015
Roads within US Forest Service Lands:.....FSTopo Data
with limited Forest Service updates, 2012 - 2015
Names:.....GNIS, 2015
Hydrography:.....National Hydrography Dataset, 2013
Contours:.....National Elevation Dataset, 2003
Boundaries:.....see metadata file 1972 - 2015
Public Land Survey System:.....BLM, 2011
Wetlands:.....FWS National Wetlands Inventory 1977 - 2014

UTM GRID AND 2015 MAGNETIC NORTH
DECLINATION AT CENTER OF SHEET

U.S. National Grid 100,000-m Square ID
UU

Grid Zone Designation
15S

SCALE 1:24 000

1 000 0 500 0 500 1 000 2 000
KILOMETERS
1 000 0 1000 2000 3000 4000 5000 6000 7000 8000 9000 10000
METERS
1 000 0 1000 2000 3000 4000 5000 6000 7000 8000 9000 10000
FEET

CONTOUR INTERVAL 20 FEET
NORTH AMERICAN VERTICAL DATUM OF 1988

This map was produced to conform with the
National Geospatial Program US Topo Product Standard, 2011.
A metadata file associated with this product is draft version 0.6.19

QUADRANGLE LOCATION

ADJOINING QUADRANGLES
1 Heavener
2 Bates
3 Cautron
4 Hontubby
5 Horseshoe Mountain
6 Page
7 Mountain Fork
8 Rich Mountain

ROAD CLASSIFICATION

Expressway
Secondary Hwy
Ramp
Interstate Route
FS Primary Route

Local Connector
Local Road
4WD
US Route
FS Passenger Route
FS High Clearance Route

State Route
FS High Clearance Route

Check with local Forest Service unit
for current travel conditions and restrictions.

LOVING, OK-AR
2016

