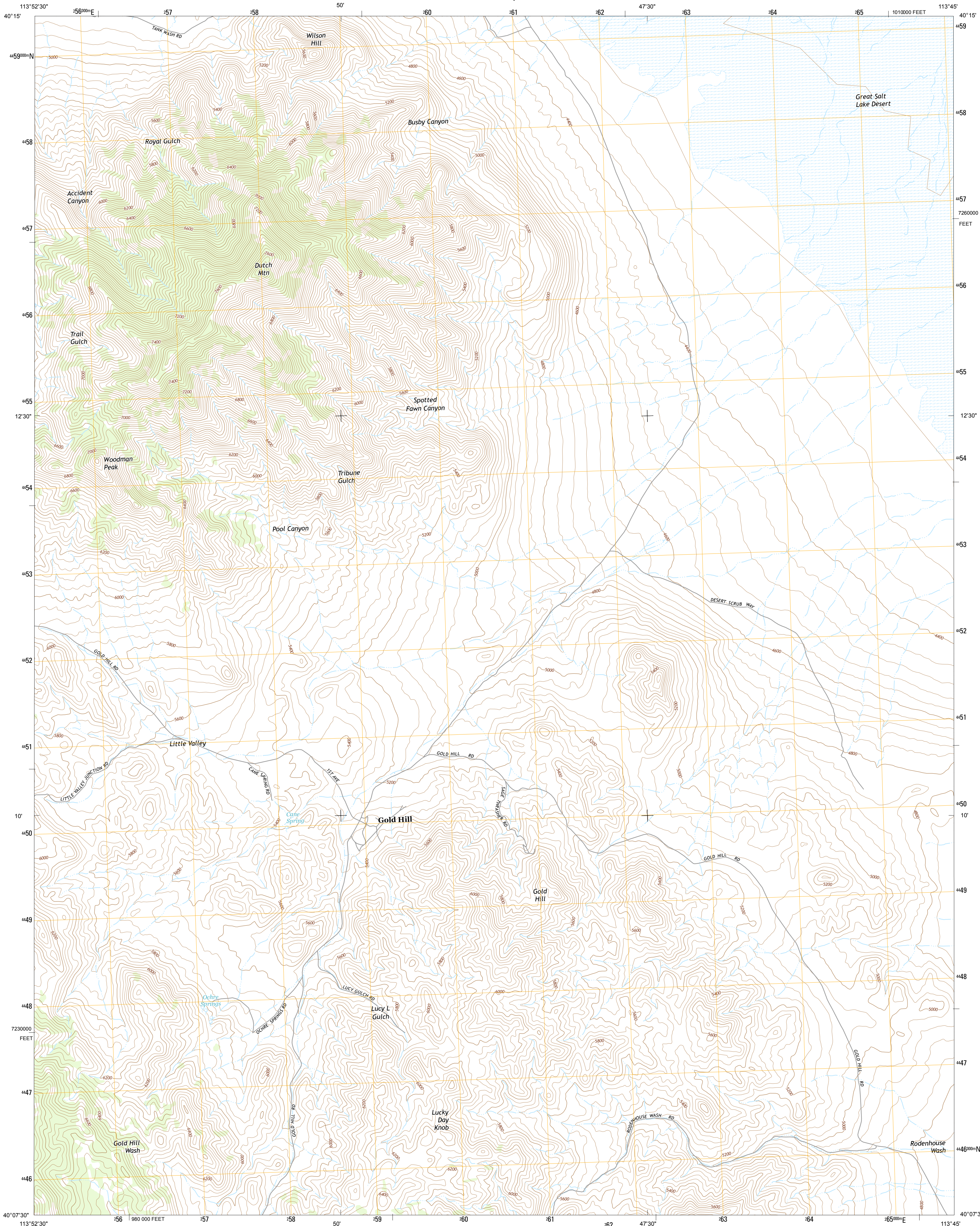




U.S. DEPARTMENT OF THE INTERIOR  
U.S. GEOLOGICAL SURVEY



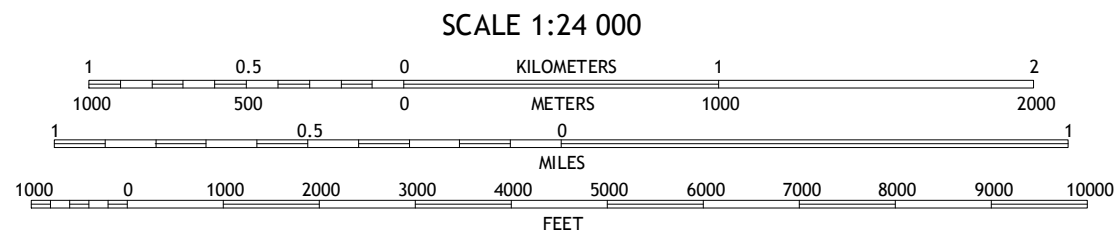
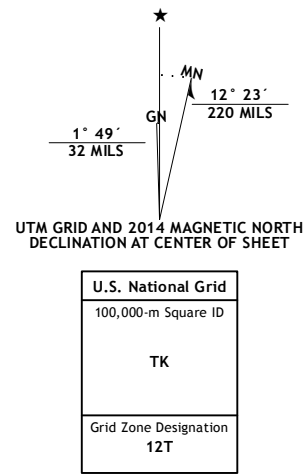
GOLD HILL QUADRANGLE  
UTAH-TOOELE CO.  
7.5-MINUTE SERIES



Produced by the United States Geological Survey  
North American Datum of 1983 (NAD83)  
World Geodetic System of 1984 (WGS84). Projection and  
1 000-meter grid: Universal Transverse Mercator, Zone 12T  
10 000-foot ticks: Utah Coordinate System of 1983 (central  
zone)

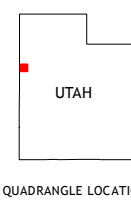
This map is not a legal document. Boundaries may be  
generalized for this map scale. Private lands within government  
reservations may not be shown. Obtain permission before  
entering private lands.

Imagery.....NAIP, July 2011  
Roads.....HERE, ©2013  
Names.....GNIS, 2013  
Hydrography.....National Hydrography Dataset, 2011  
Contours.....National Elevation Dataset, 2000  
Boundaries.....Multiple sources; see metadata file 1972 - 2013  
Public Land Survey System.....BLM, 2011



CONTOUR INTERVAL 40 FEET  
NORTH AMERICAN VERTICAL DATUM OF 1988

This map was produced to conform with the  
National Geospatial Program US Topo Product Standard, 2011.  
A metadata file associated with this product is draft version 0.6.16



ROAD CLASSIFICATION  
Expressway  
Secondary Hwy  
Ramp  
Interstate Route  
US Route  
State Route  
Local Connector  
Local Road  
4WD

|   |   |                           |                  |
|---|---|---------------------------|------------------|
| 1 | 2 | 3                         | 1 Elephant Knoll |
| 4 | 5 | 2 Elephant Knoll SE       |                  |
| 6 | 7 | 3 North of Gold Hill Wash |                  |
|   | 8 | 4 Ochre Mountain          |                  |
|   |   | 5 Gold Hill Wash          |                  |
|   |   | 6 Ibapah                  |                  |
|   |   | 7 Clifton                 |                  |
|   |   | 8 Goshute Wash            |                  |

GOLD HILL, UT  
2014

