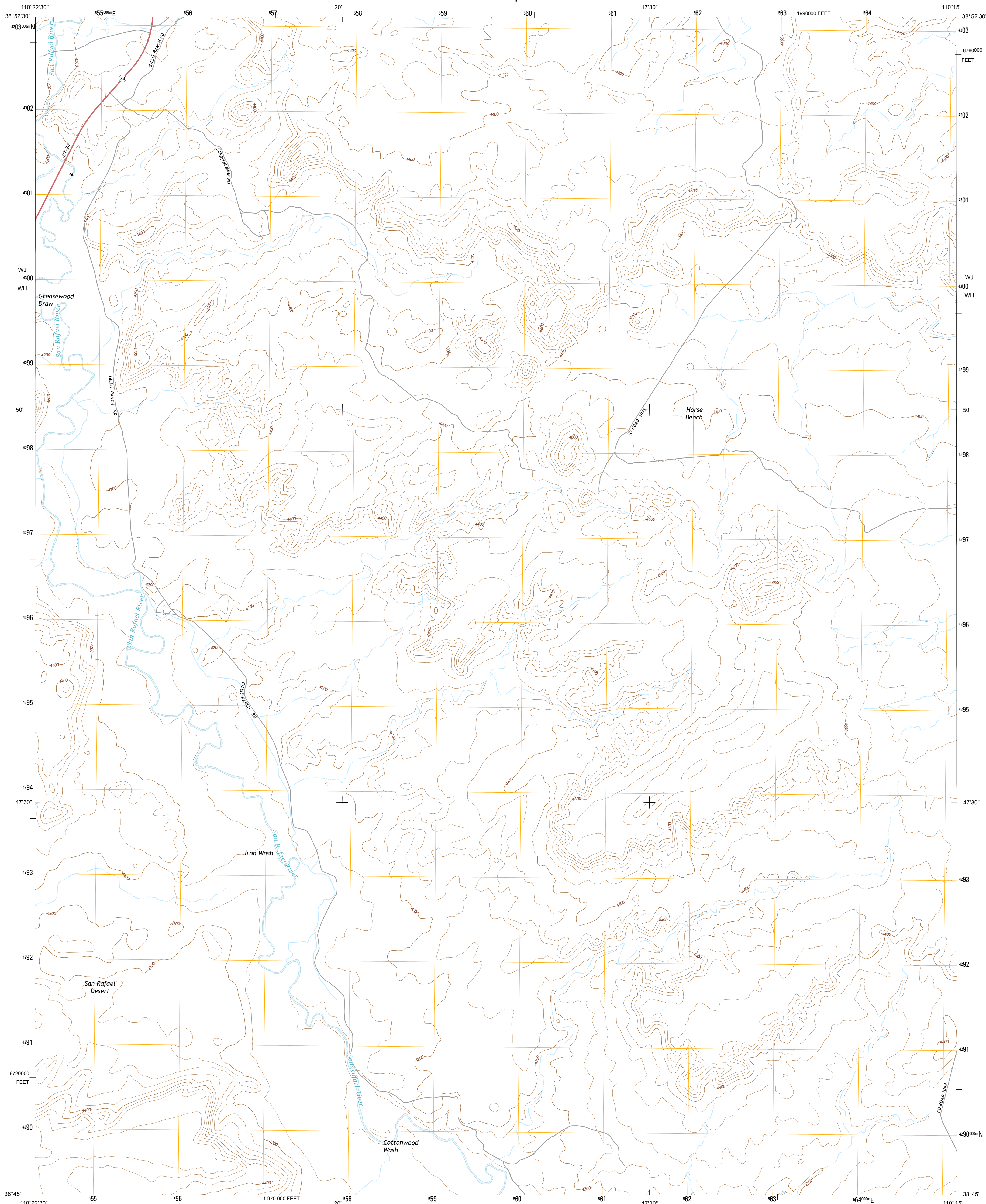




U.S. DEPARTMENT OF THE INTERIOR
U.S. GEOLOGICAL SURVEY



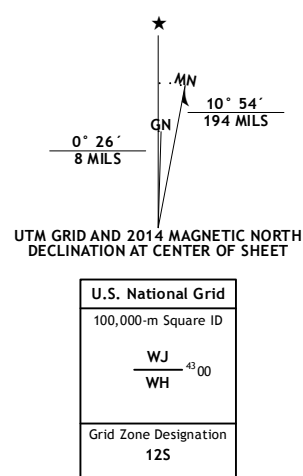
HORSE BENCH WEST QUADRANGLE
UTAH-EMERY CO.
7.5-MINUTE SERIES



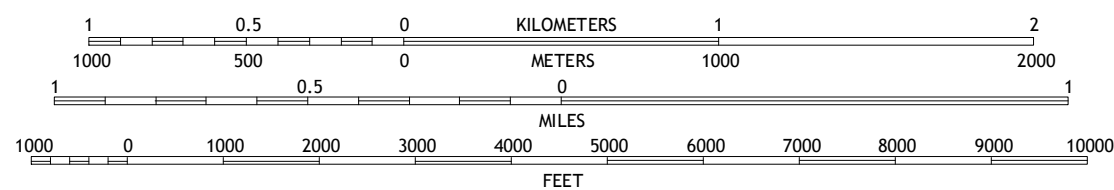
Produced by the United States Geological Survey
North American Datum of 1983 (NAD83)
World Geodetic System of 1984 (WGS84). Projection and
1 000-meter grid: Universal Transverse Mercator, Zone 12S
10 000-foot ticks: Utah Coordinate System of 1983 (central
zone)

This map is not a legal document. Boundaries may be generalized for this map scale. Private lands within government reservations may not be shown. Obtain permission before entering private lands.

Imagery.....	NAIP, June 2011
Roads.....	HERE, ©2013
Names.....	GNIS, 2013
Hydrography.....	National Hydrography Dataset, 2011
Contours.....	National Elevation Dataset, 2000
Boundaries.....	Multiple sources; see metadata file 1972 - 2013
Public Land Survey System.....	BLM, 2011

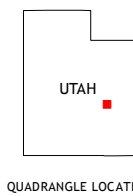


SCALE 1:24 000

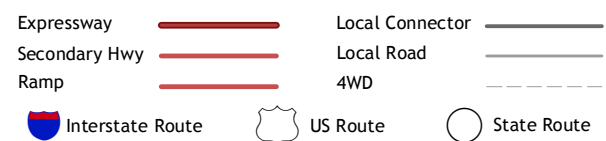


CONTOUR INTERVAL 40 FEET
NORTH AMERICAN VERTICAL DATUM OF 1988

This map was produced to conform with the
Geospatial Program US Topo Product Standard, 2011.
Data file associated with this product is draft version 0.6.16



ROAD CLASSIFICATION



1	2	3	1 Spotted Wolf Canyon
4		5	2 Jessies Twist
6	7	8	3 Green River

ADJOINING QUADRANGLES

4 Greasewood Draw
5 Horse Bench East
6 Crows Nest Spring
7 Spring Canyon
8 Moonshine Wash

HORSE BENCH WEST, UT
2014

