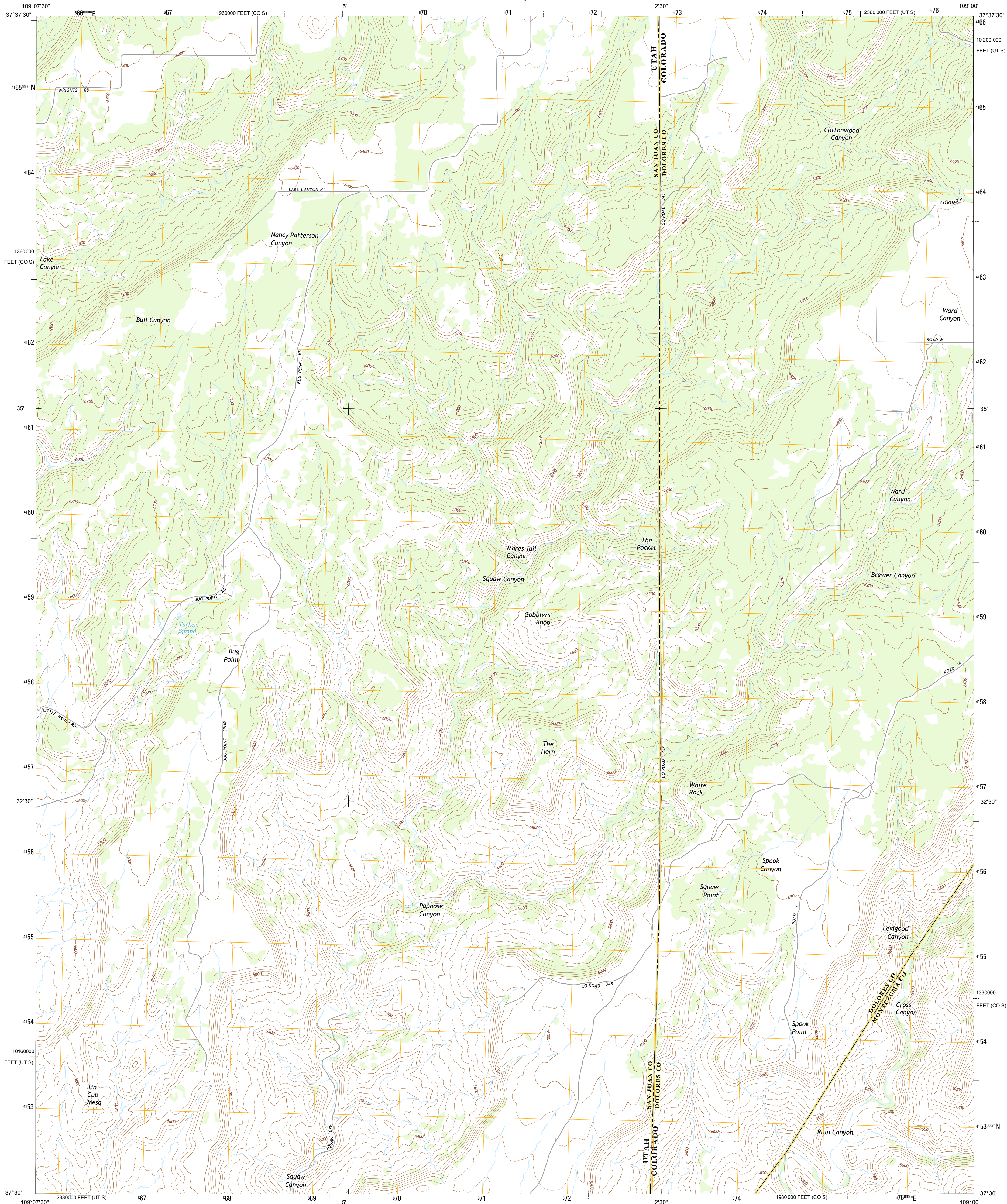




U.S. DEPARTMENT OF THE INTERIOR  
U.S. GEOLOGICAL SURVEY



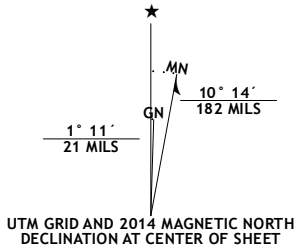
PAPOOSE CANYON QUADRANGLE  
UTAH-COLORADO  
7.5-MINUTE SERIES



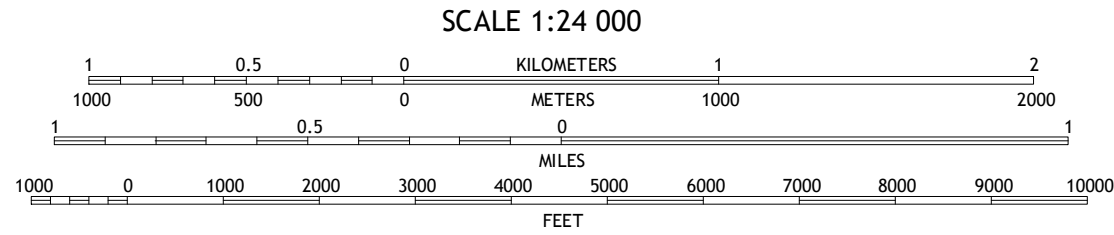
Produced by the United States Geological Survey  
North American Datum of 1983 (NAD83).  
World Geodetic System of 1984 (WGS84). Projection and  
1 000-meter grid: Universal Transverse Mercator, Zone 12S  
10 000-foot ticks: Utah Coordinate System of 1983 (south zone),  
Colorado Coordinate System of 1983 (south zone)

This map is not a legal document. Boundaries may be  
generalized for this map scale. Private lands within government  
reservations may not be shown. Obtain permission before  
entering private lands.

Imagery.....NAIP, June 2011  
Roads.....HERE, ©2013  
Names.....GNIS, 2013  
Hydrography.....National Hydrography Dataset, 2011  
Contours.....National Elevation Dataset, 2005  
Boundaries.....Multiple sources; see metadata file 1972-2013  
Public Land Survey System.....BLM, 2011

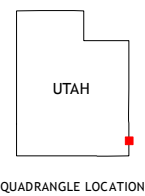


U.S. National Grid 100,000-m Square ID
XG
Grid Zone Designation 12S



CONTOUR INTERVAL 40 FEET  
NORTH AMERICAN VERTICAL DATUM OF 1988

This map was produced to conform with the  
National Geospatial Program US Topo Product Standard, 2011.  
A metadata file associated with this product is draft version 0.6.16



ROAD CLASSIFICATION	
Expressway	Local Connector
Secondary Hwy	Local Road
Ramp	4WD
Interstate Route	US Route
	State Route

1	2	3
4	5	6
7	8	

ADJOINING QUADRANGLES

- 1 Horsehead Point
- 2 Burnt Cabin Creek
- 3 Champagne Spring
- 4 Bug Canyon
- 5 Ruin Canyon
- 6 Hatch Trading Post
- 7 Ruin Point
- 8 Negro Canyon

PAPOOSE CANYON, UT-CO  
2014

